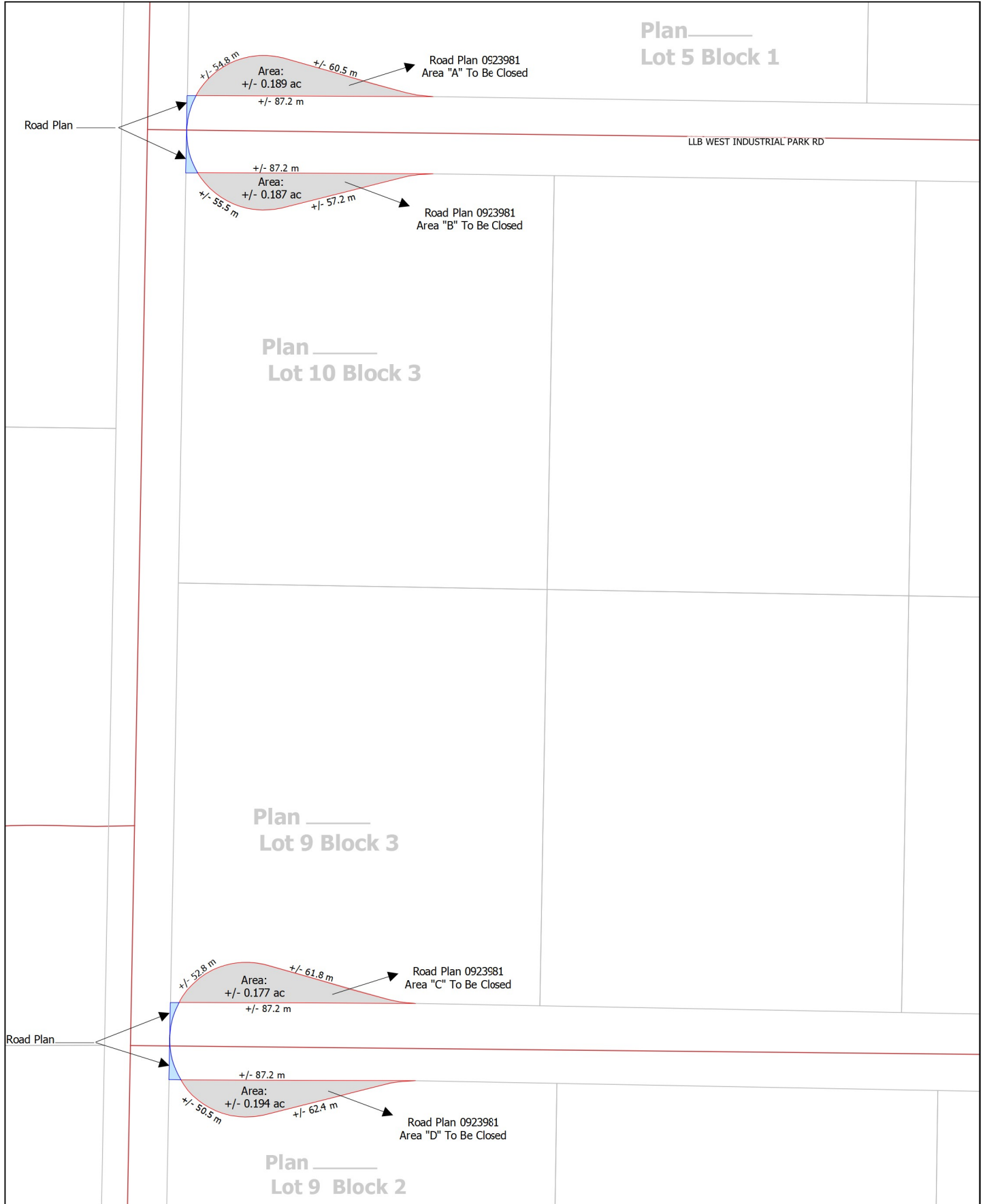


SCHEDULE 'A'

Bylaw 21-012



Note: Area to be confirmed by survey.

Map Produced: May 13, 2021

Projection: UTM12 NAD83

- Road Closure Area
- Prospective Road Allowance
- Cadastre
- Road

Lac La Biche County makes no representation or warranties regarding the information contained in this document, including, without limitation, whether said information is accurate or complete. Persons using this document do so solely at their own risk, and Lac La Biche County shall have no liability to such persons for any loss or damage whatsoever. This document shall not be copied or distributed to any person without the express written consent of Lac La Biche County.

0 50 100 150 m

Base Map compiled from the Provincial Title Mapping Digital Base. Spatial Data Warehouse Ltd., November 2020. © 2021 Lac La Biche County. All Rights Reserved.