

**BYLAW 21-033
OF
LAC LA BICHE COUNTY**

A BYLAW OF LAC LA BICHE COUNTY IN THE PROVINCE OF ALBERTA TO AMEND BYLAW 17-004, AS AMENDED, BEING THE LAND USE BYLAW OF LAC LA BICHE COUNTY.

WHEREAS Council adopted Lac La Biche County Bylaw 17-004 to be used as the Lac La Biche County Land Use Bylaw; and

WHEREAS it is deemed expedient to amend Bylaw 17-004, as amended, as set out in Section 692 of the *Municipal Government Act*, R.S.A. 2000, Chapter M-26, as amended;

NOW THEREFORE under the authority and subject to the provisions of the *Municipal Government Act*, and by virtue of all other powers enabling it, the Council of Lac La Biche County, duly assembled, enacts as follows:

Bylaw 17-004 Amendments

- 1 That Bylaw 17-004, as amended, being the Land Use Bylaw is amended as follows:
 - (a) Schedule "A" is amended such that all of Lot 1, Block 1, Plan 0621800 containing 8.11 Ha (20.04 Ac.) in size more or less, as shown on Schedule 'A' of this Bylaw is rezoned from Agricultural District (AG) to Highway Commercial District (HC).
 - (b) Schedule "A" is amended such that part of RL-6-68-16-W4M (part of Lot 6, Plan LACLABI) containing 19.83 Ha (49.0 Ac.) in size more or less, as shown on Schedule 'A' of this Bylaw is rezoned from Agricultural District (AG) to Highway Commercial District (HC).

Severability

- 2 Each provision of this Bylaw is independent of all other provisions. If any such provision is declared invalid by a court of competent jurisdiction, all other provisions of this Bylaw will remain valid and enforceable.

Effective Date

- 3 This Bylaw shall come into effect upon passing of the third reading.

THAT BYLAW 21-033 BE GIVEN FIRST READING THIS 7th DAY OF DECEMBER, 2021.

"Original Signed"

Mayor

"Original Signed"

Chief Administrative Officer

THAT BYLAW 21-033 BE GIVEN SECOND READING THIS 25TH DAY OF JANUARY, 2022.

THAT BYLAW 21-033 BE GIVEN THIRD READING THIS 25TH DAY OF JANUARY, 2022.

"Original Signed"

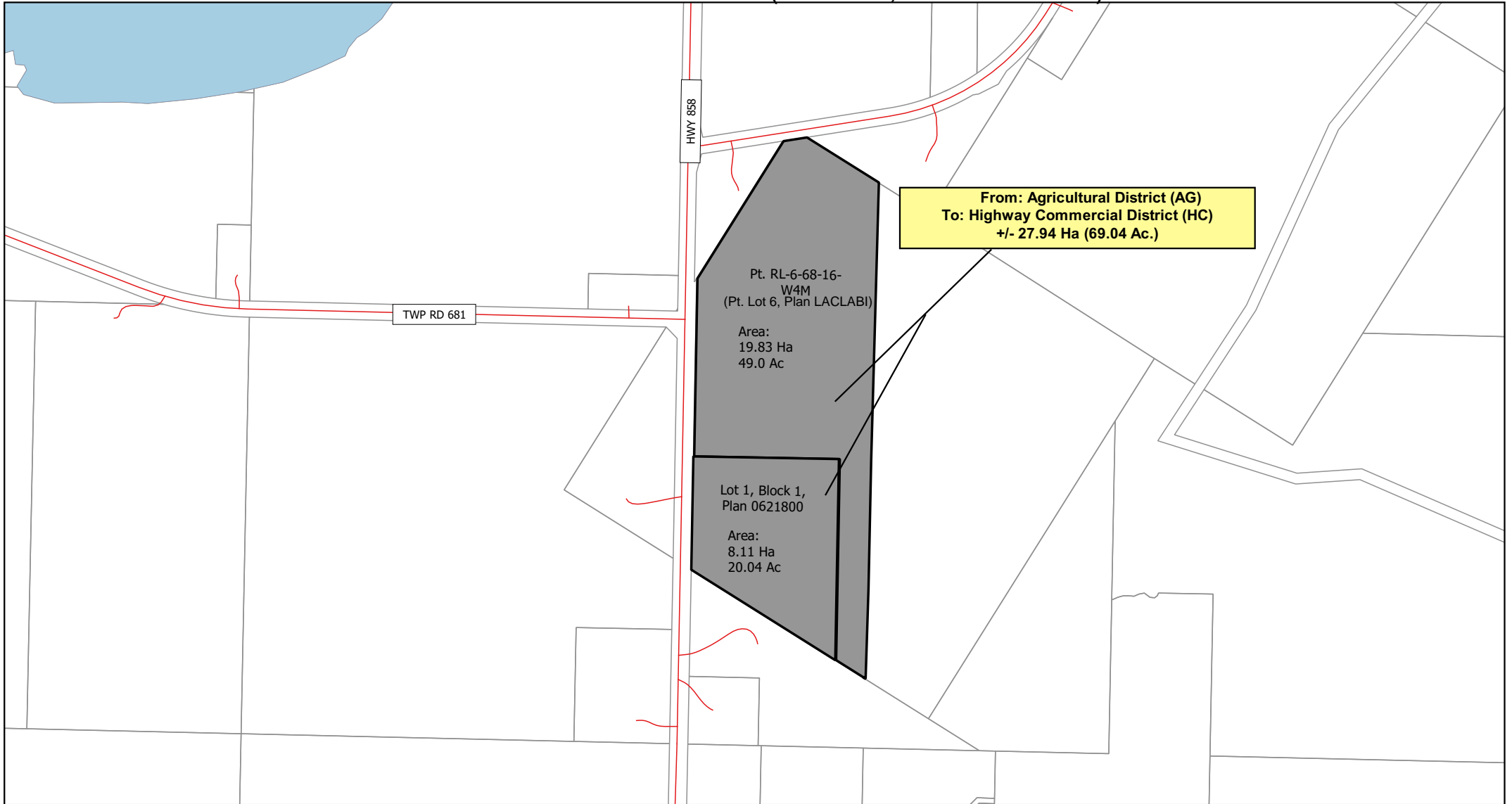
Mayor

"Original Signed"

Chief Administrative Officer



Lot 1, Block 1, Plan 0621800 & Pt. RL-6-68-16-W4M (Pt. Lot 6, Plan LACLABI)



 **Proposed Rezoning**



Map Produced: November 05, 2021

Projection: UTM12 NAD83

Lac La Biche County makes no representation or warranties regarding the information contained in this document, including, without limitation, whether said information is accurate or complete. Persons using this document do so solely at their own risk, and Lac La Biche County shall have no liability to such persons for any loss or damage whatsoever. This document shall not be copied or distributed to any person without the express written consent of Lac La Biche County.

Base Map compiled from the Provincial Title Mapping Digital Base.
Spatial Data Warehouse Ltd., November 2020. © 2021 Lac La Biche County. All Rights Reserved.