

Lac La Biche County *Policy*

TITLE: Snow and Ice Control

POLICY NO: PW-30-009

RESOLUTION: 22.890

EFFECTIVE DATE: September 7, 2021

DEPARTMENT RESPONSIBLE: Transportation Services

NEXT REVIEW DATE: September 7, 2024

POLICY STATEMENT:

Lac La Biche County recognizes the need to provide a consistent snow removal and ice control procedure throughout the County.

LEVELS OF SERVICE:

1. In the Urban areas snow and ice control will commence when accumulation of five (5) centimeters of snow occurs in the business district and commercial district and ten (10) centimeters in the residential district.
2. In the rural areas, snow and ice control shall commence when five (5) centimeters of snow accumulates on paved or oiled roads and when ten (10) centimeters occurs on gravel roads.
3. Lac La Biche County will clear the snow from all local gravel roads within five (5) days after the end of a snow event and twenty-four (24) hours from all paved and oiled surface roads.
4. Snow removal in urban areas shall occur as follows:
 - a. When ten (10) centimeters of hard packed snow and ice has accumulated or a single major snow event in excess of ten (10) centimeters occurs in the business district / commercial district
 - b. When fifteen (15) centimeters of hard packed accumulated snow and ice or a single major snow event in excess of 15 centimeters occurs the residential district.
 - c. Snow removal shall commence within 48 hours of the end of a major snow event and will continue until completion of operations in both major Hamlets.
 - d. Parking areas within the business districts will be picked up on a monthly basis if required or when snow levels have reached the top of curb.

URBAN PRIORITIES:

1. Arterial Roads
2. Collector Roads
3. Local Residential Roads, Seasonal Roads and County Properties
4. Back Alleys. If conditions are such that some alleys are deemed impassable, equipment will be sent to clear only identified alleys. The remainder will be cleared after Priority #2 areas are completed and only if the alleys are deemed to require clearing.

RURAL PRIORITIES:

1. Arterial Roads

2. Collector Roads
3. Local Roads and Seasonal Roads
4. Fire Halls and Parking areas
5. Fire Department water pick up points
6. County Utilities Buildings or Lift Stations
7. Community Halls
8. Graveyard Access
9. Rural Private Driveways with Snowplow Flags

The following are locations where Lac La Biche County will not complete snow removal and ice control:

1. Schools
2. Private and Commercial driveways in Residential Areas
3. Private and Commercial driveways in Subdivisions
4. Private and Oil Lease Roads

DEFINITIONS:

- **Arterial Roads** – Major through roads that are expected to carry large volumes of traffic.
- **Collector Roads** – collect traffic from local roads and distribute to arterials.
- **Local Roads** – Generally lower speed and volumes of traffic. Provide access to residences and other land parcels.
- **Seasonal Roads** – Roads that are either dry weather use only or only required for certain seasonal activities.
- **Snow and Ice Control** – Plowing snow or de-icing through use of salt or other chemicals.
- **Snow and Ice Removal**- Pick up snow and ice and haul away for disposal.

PRINCIPLES:

The purpose of this policy is to provide Transportation Services guidelines for reducing or eliminating snow and ice hazards and to minimize the inconvenience of winter conditions for motorists and pedestrians, to the greatest degree possible, within available resources of the County.

“Original Signed”
Chief Administrative Officer

October 19, 2022
Date

“Original Signed”
Mayor

October 20, 2022
Date

SPECIAL NOTES/CROSS REFERENCE: PW-30-009 Snow and Ice Control Procedure; PI-30-009

AMENDMENT DATE: September 7, 2021; September 27, 2022

Procedure

TITLE: Snow and Ice Control

PROCEDURE NO: PW-30-009

EFFECTIVE DATE: October 27, 2021

DEPARTMENT RESPONSIBLE: Transportation Services

NEXT REVIEW DATE: September 7, 2024

DEFINITIONS:

Definitions are listed in the Snow and Ice Control Policy.

PROCEDURE:

1. Snow Removal Priorities are as described in the Snow and Ice Control Policy, however:
 - a. If conditions are such that some alleys are deemed impassable, equipment will be sent to clear only identified alleys. The remainder will be cleared after Priority #2 areas are completed and only if the alleys are deemed to require clearing.
2. Roadway snow removal operations will normally be undertaken during regular work hours and workdays except when one of the following circumstances occurs:
 - a. Wind and drifting create problems for traffic movement, or
 - b. Roadways have not been cleared within the time periods established in this policy, at which time clearing operations will begin immediately and then become continuous, or
 - c. If weather conditions during a storm are such that Priority #1 roadways become icy or accumulate 5 centimeters of snow, the necessary equipment will be mobilized until these priority areas have been cleared and/or sanded.
3. Unless there are unusual circumstances or additional interfering snowfalls, upon cessation of a major storm, priority #1 roadways are to be cleared within twenty-four (24) hours, priority #2 roadways within seventy-two (72) hours, and priority #3 within five (5) days.
4. To ensure a reasonable level of safety to motorists and pedestrians, sanding operations shall be initiated when the roadways have been deemed hazardous to public safety. Sanding shall be continued until a reasonable level of ice control has been attained.

Urban:

1. The Snow and Ice Control Policy describes urban snow removal priorities and the level of service that will be provided.

2. The criteria for setting snow removal priorities will be based on the following as shown in Schedule A and B:
 - a. Downtown Business District with defined parking
 - b. Commercial Business District
 - c. Residential District
 - d. Special conditions (terrain, emergency services, drifting, drainage).
3. Snow that has accumulated on the streets shall not be placed onto any developed lots, or sidewalks. Snow may be windrowed on the street, medians, or boulevards until removed. Snow may be windrowed and placed in ditches and undeveloped lots to minimize expenditures.

Rural:

1. The Snow and Ice Control Policy describes rural snow removal priorities and the level of service that will be provided.
2. Snow clearing on rural roads will be performed as soon as can be reasonably accommodated after the weather clears; however, at the discretion of the grader operators, and during periods of continued snowfall events and to ensure a reasonable level of safety to motorists and pedestrians, plowing operations will be initiated when the roadways have been deemed hazardous to public safety.

Sidewalks:

1. It is the responsibility of the residents, institutions, and businesses to adequately remove all snow and ice from adjacent sidewalks.
2. To ensure that no damage is done to the paving stones on main street, the following guidelines shall be adhered to:
 - a. No powered equipment utilizing metal blades are permitted on architectural sidewalks.
 - b. Powered equipment with sweeping or snow blowing apparatus is permitted only with prior approval from the County. Size, weight, and condition of equipment will be the determining factors.
 - c. The use of metal blades on architectural sidewalks is prohibited. Only plastic shovels are permitted.
 - d. No salt shall be used for ice control.

Airport:

1. Snow clearing at the airport is considered a high priority due to the accident potential at this facility.

2. The Transportation Manager, Urban Supervisor or their designate (with input from the local flight service operator) are responsible for initiating snow clearing at the airport.
3. Snow clearing at the airport shall be performed as soon as can be reasonably accommodated after the weather clears. (If an air ambulance is required to land the runway maybe cleared during a storm).
4. A NOTAM (Notice to Airmen) will be issued with Edmonton Flight Service each morning after the airport inspection, if in the opinion of the person authorized to conduct daily inspections, snow accumulation on the runway could present danger to aircraft. A NOTAM will also be issued prior to each snow clearing operation or prior to any other maintenance activity which will require operation of equipment on the airport runway for an extended period.
5. The airport runway, taxiway, and the apron adjacent to the terminal building will be cleared as a priority. If a heavy snowfall results in a shortage of equipment, the clearing of the access road to the airport may be delayed.
6. Snow will be cleared to three (3) meters behind the runway lights with a snow depth of no more than three hundred (300) millimeters.
7. Sand or salt is not to be used on the runway for ice control; urea or other approved de-icing agents may be used.

“Original Signed”

Chief Administrative Officer

October 19, 2022

Date

SPECIAL NOTES/CROSS REFERENCE:

Snow and Ice Control Policy PW-30-009

Schedule A- Hamlet of Lac La Biche-Snow Removal and Ice Control/Hamlet of Plamondon- Snow Removal and Ice Control

Schedule B- Plowing and Sanding Map-Priority Map

Schedule C- Sanding and Plowing Priorities-Location of Arterial and Collector Roads (Grader Beat Map, Grader Beats Map-Area 01, Grader Beats Map-Area 02, Grader Beats Map-Area 03, Grader Beats Map-Area 04, Grader Beats Map-Area 05, Grader Beats Map-Area 06, Grader Beats Map-Area 07)

Zone 1- Snow Pick up-Business and Downtown Cores

Zone 2- Snow Pick up-Lac La Biche North

Zone 3- Snow Pick up-Lac La Biche South

Zone 4- Snow Pick up- Plamondon

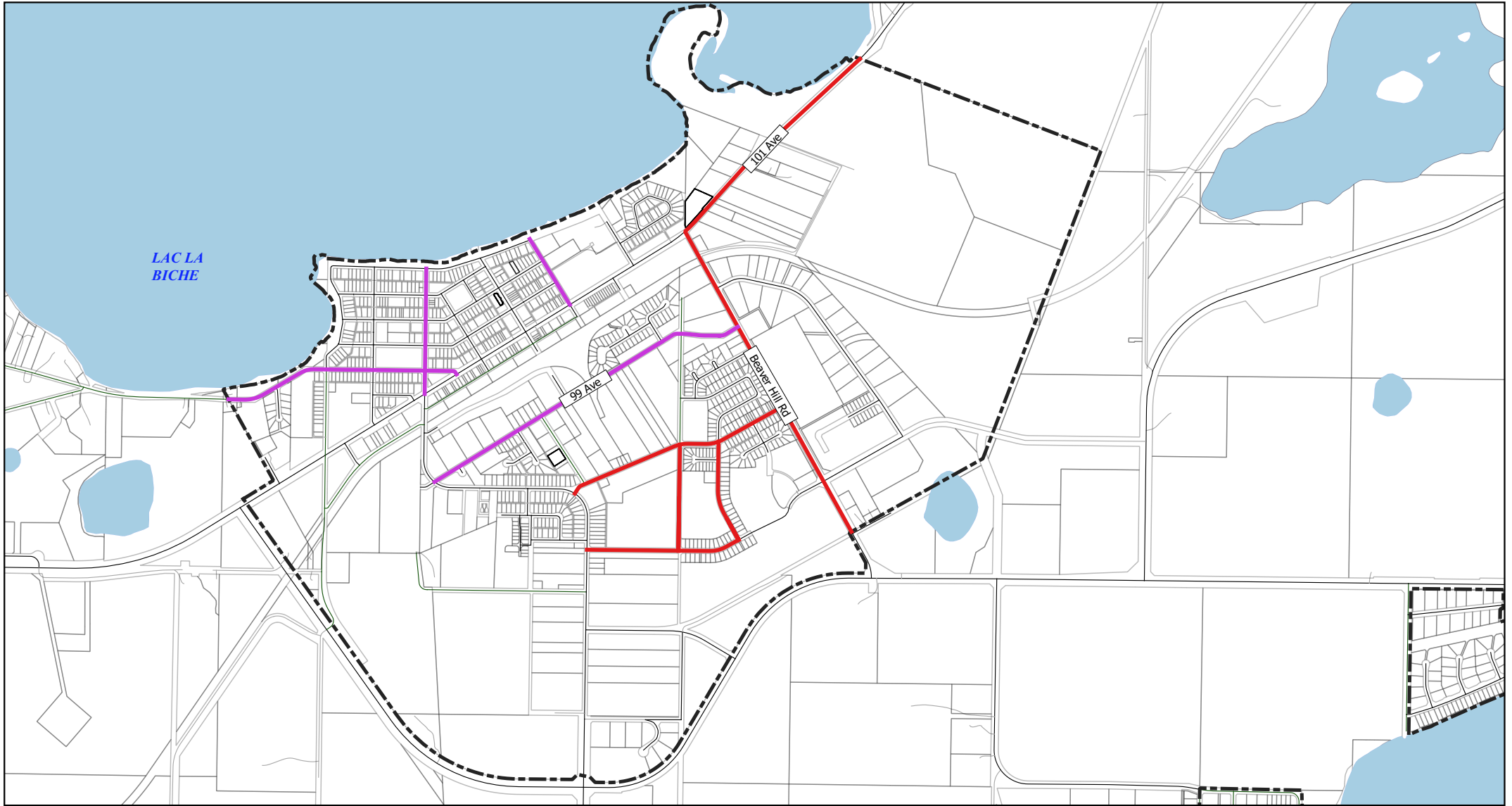
Zone-Ice Road

AMENDMENT DATE: September 27, 2022

Schedule A

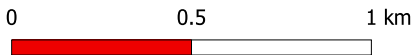
Hamlet of Lac La Biche

Snow Removal and Ice Control



Snow Routes

- Arterial/Emergency
- Collector
- Hamlet Boundaries
- Cadastre



Map Produced: September 29, 2021

Projection: UTM12 NAD83

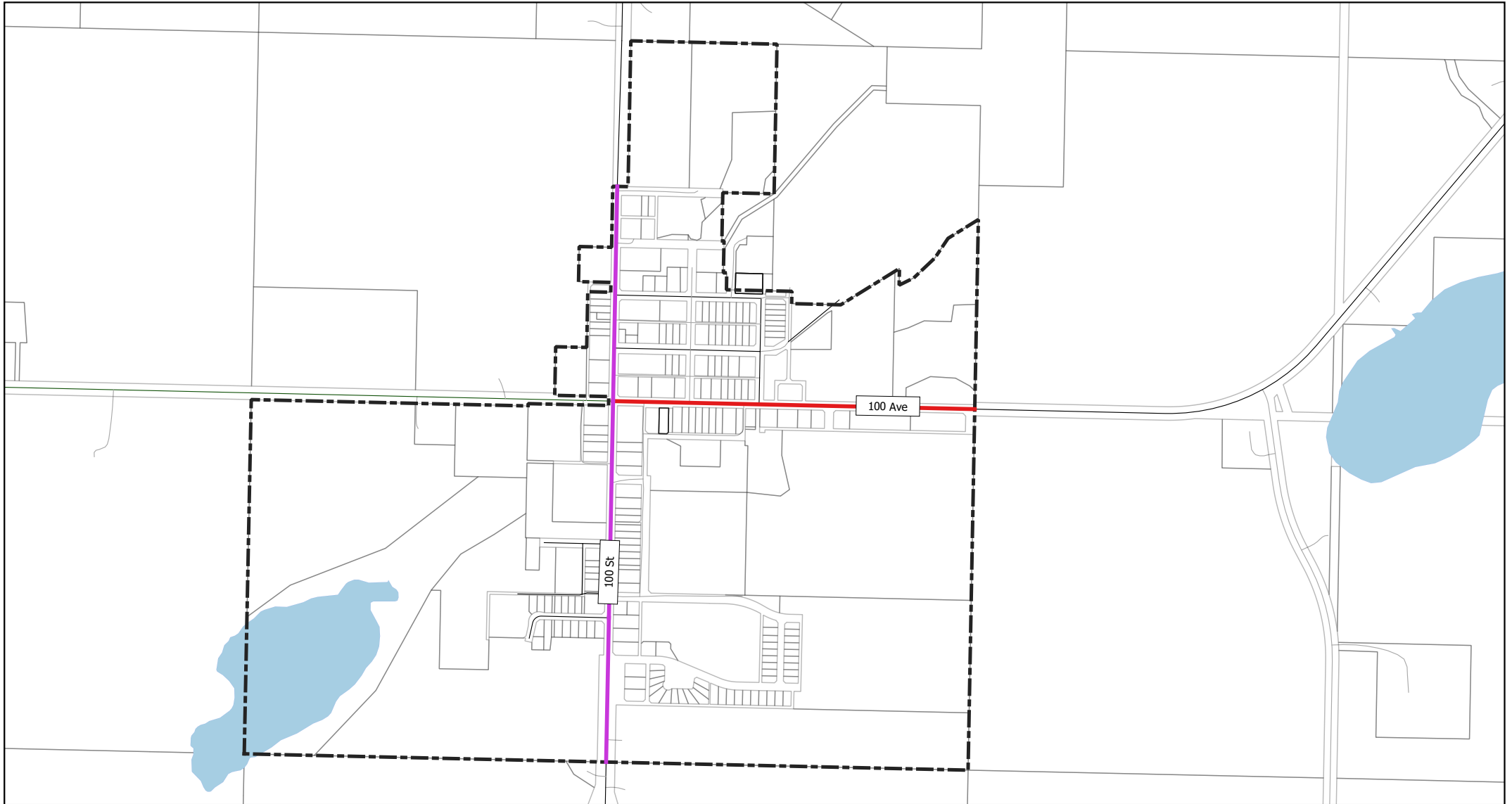
Lac La Biche County makes no representation or warranties regarding the information contained in this document, including, without limitation, whether said information is accurate or complete. Persons using this document do so solely at their own risk, and Lac La Biche County shall have no liability to such persons for any loss or damage whatsoever. This document shall not be copied or distributed to any person without the express written consent of Lac La Biche County.

Base Map compiled from the Provincial Title Mapping Digital Base. Spatial Data Warehouse Ltd., November 2020. © 2021 Lac La Biche County. All Rights Reserved.





Schedule A

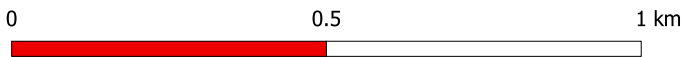
Hamlet of Plamondon

Snow Removal and Ice Control



Snow Routes

-  Arterial/Emergency
-  Collector
-  Hamlet Boundaries
-  Cadastre



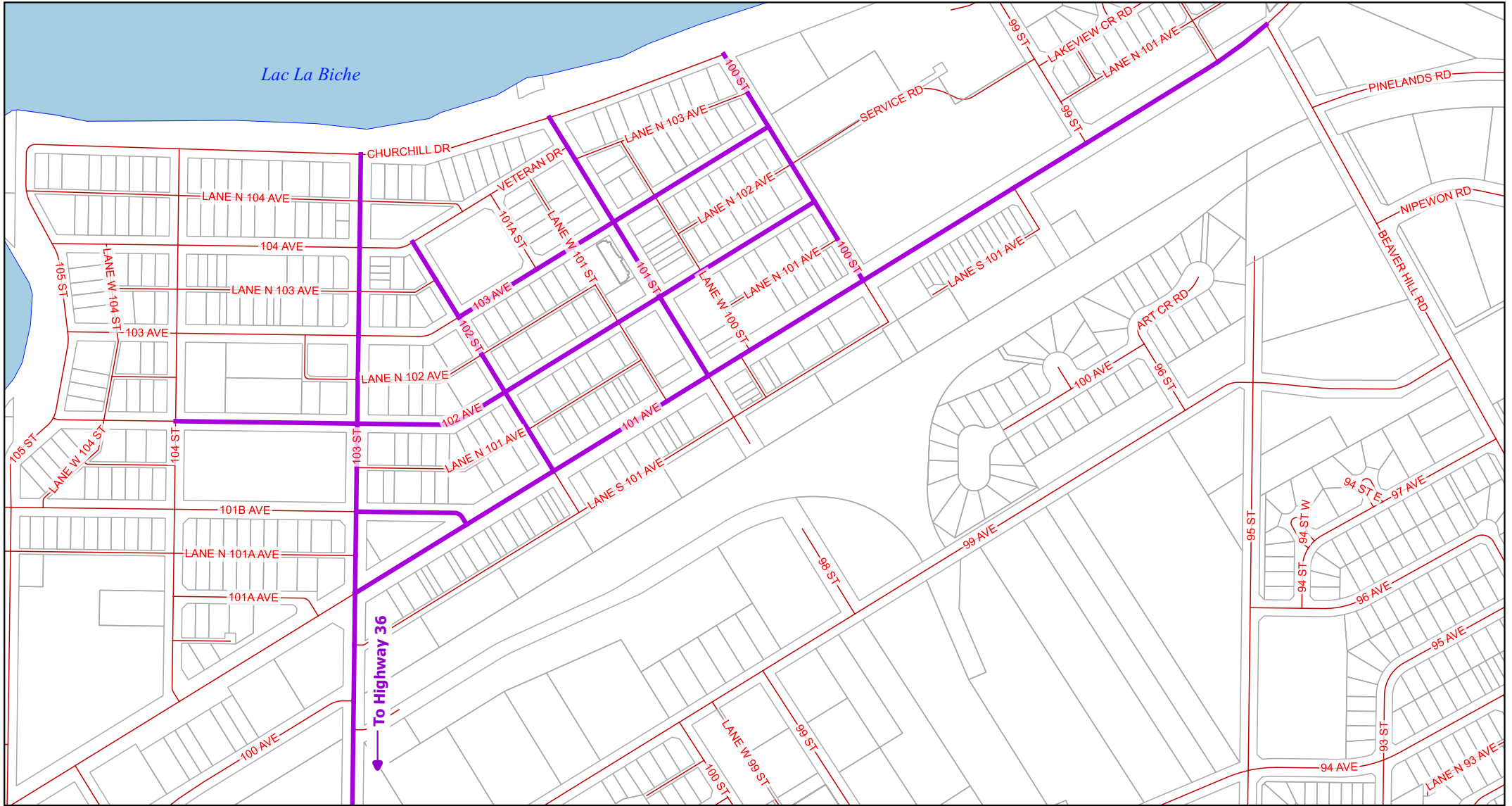
Map Produced: September 29, 2021

Projection: UTM12 NAD83

Lac La Biche County makes no representation or warranties regarding the information contained in this document, including, without limitation, whether said information is accurate or complete. Persons using this document do so solely at their own risk, and Lac La Biche County shall have no liability to such persons for any loss or damage whatsoever. This document shall not be copied or distributed to any person without the express written consent of Lac La Biche County.

Base Map compiled from the Provincial Title Mapping Digital Base.
Spatial Data Warehouse Ltd., November 2020. © 2021 Lac La Biche County. All Rights Reserved.

Schedule B Plowing and Sanding Priority Map



Map Produced: July 21, 2022

Projection: UTM12 NAD83

Lac La Biche County makes no representation or warranties regarding the information contained in this document, including, without limitation, whether said information is accurate or complete. Persons using this document do so solely at their own risk, and Lac La Biche County shall have no liability to such persons for any loss or damage whatsoever. This document shall not be copied or distributed to any person without the express written consent of Lac La Biche County.



Base Map compiled from the Provincial Title Mapping Digital Base.
Spatial Data Warehouse Ltd., November 2021. © 2022 Lac La Biche County. All Rights Reserved.

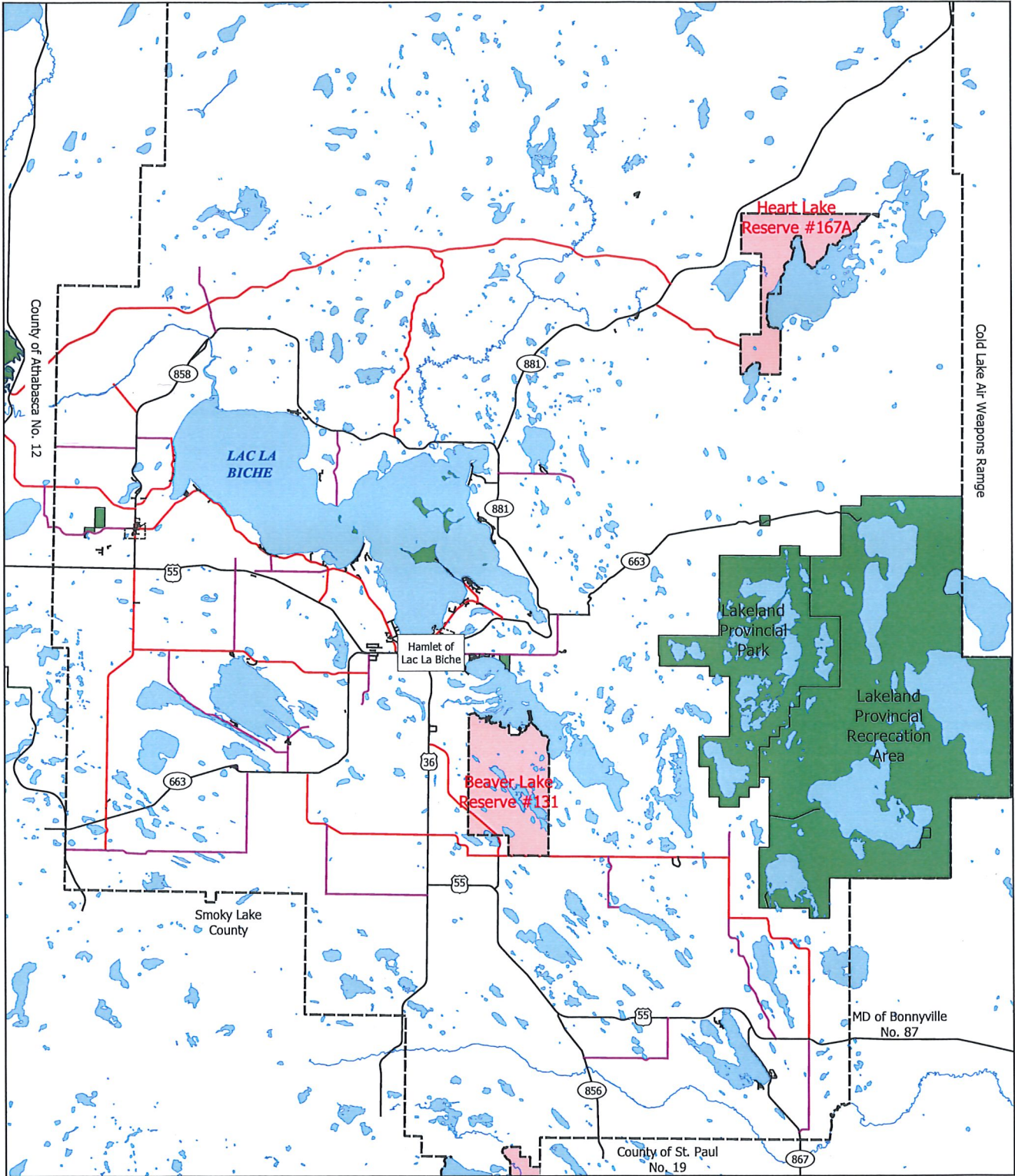


Lac La Biche County
welcoming by nature.

Schedule C

Sand & Plowing Priorities

Location of Arterial and Collector Roads



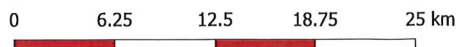
Map Produced: October 5, 2021

Projection: UTM12 NAD83

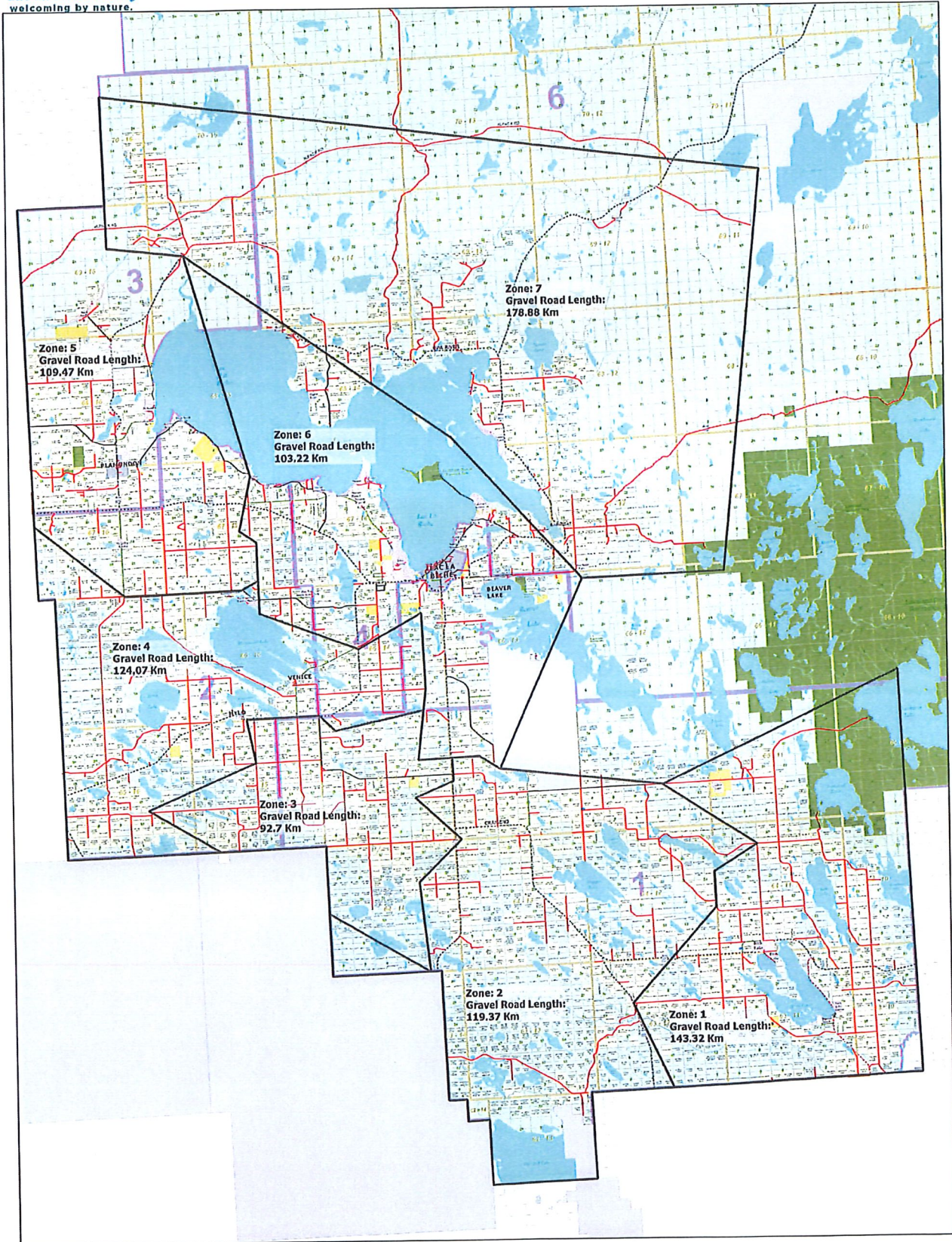
- Municipal Boundaries
- Water Body
- Arterial Roads
- Collector Roads
- Roads
- Indian Reserves
- Parks

Lac La Biche County makes no representation or warranties regarding the information contained in this document, including, without limitation, whether said information is accurate or complete. Persons using this document do so solely at their own risk, and Lac La Biche County shall have no liability to such persons for any loss or damage whatsoever. This document shall not be copied or distributed to any person without the express written consent of Lac La Biche County.

Base Map compiled from the Provincial Title Mapping Digital Base.
Spatial Data Warehouse Ltd., November 2020. © 2021 Lac La Biche County. All Rights Reserved.



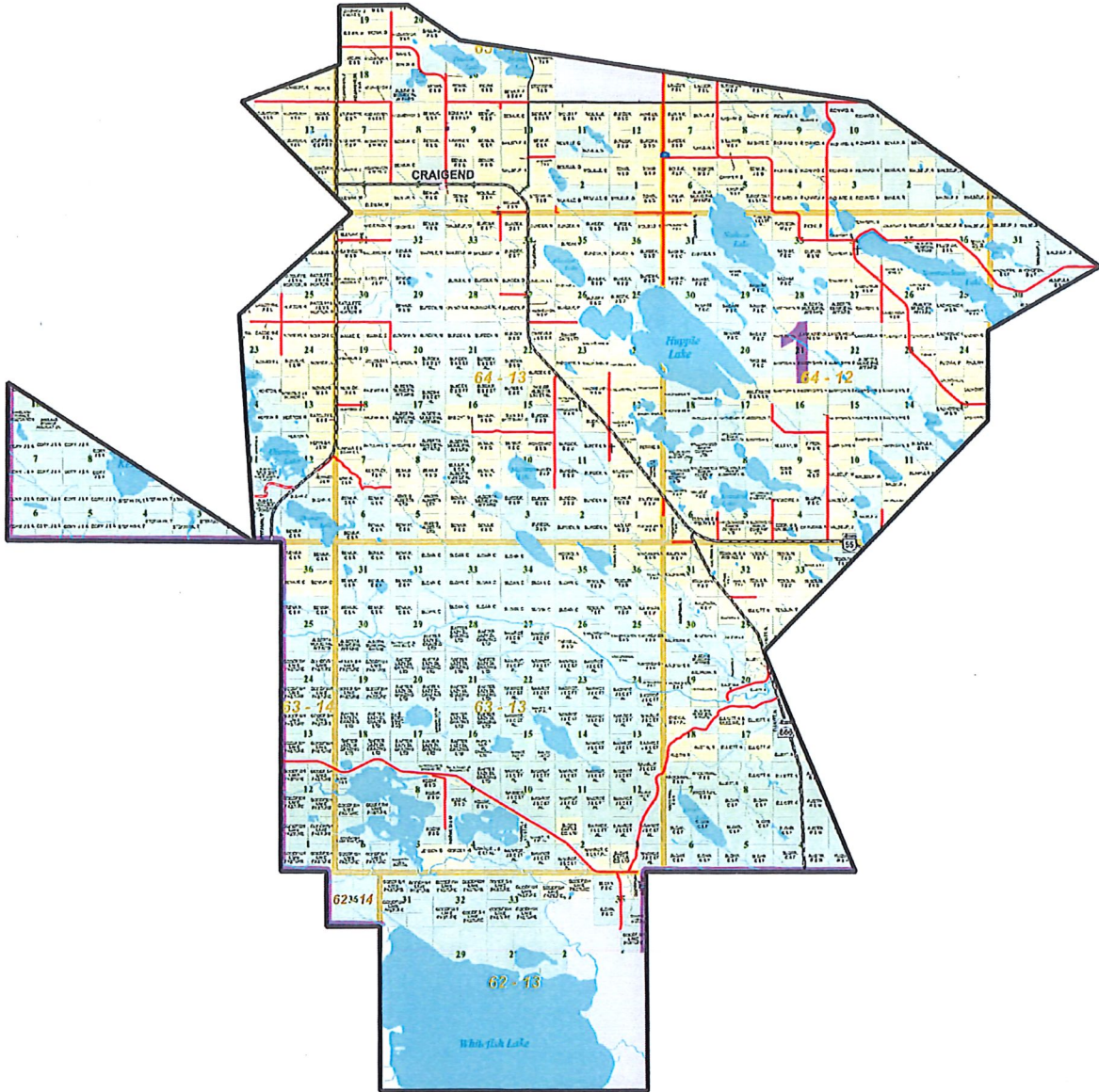
LAC LA BICHE COUNTY GRADER BEAT MAP



GRADER BEATS MAP AREA 01

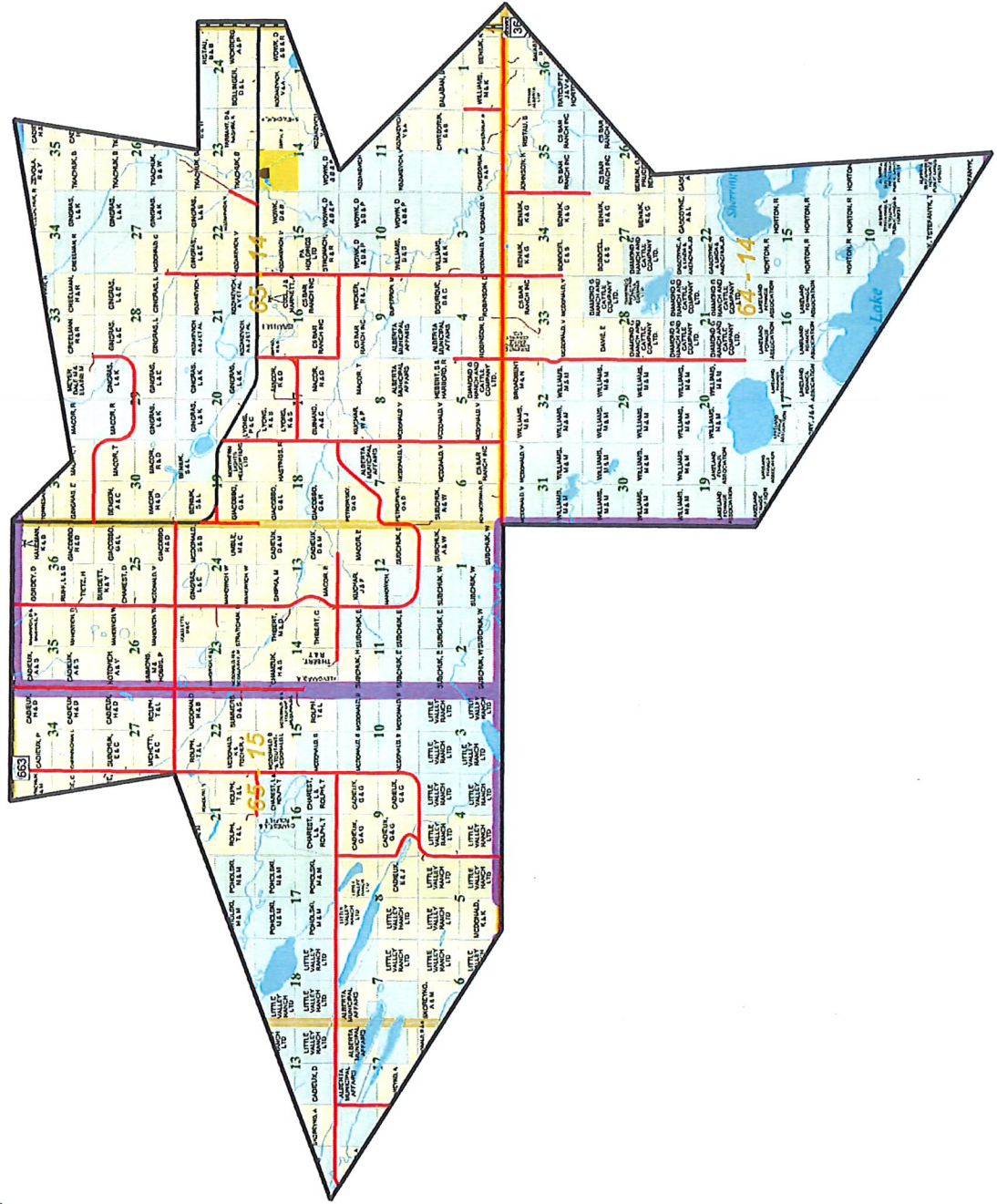


GRADER BEATS MAP AREA 02





GRADER BEATS MAP AREA 03

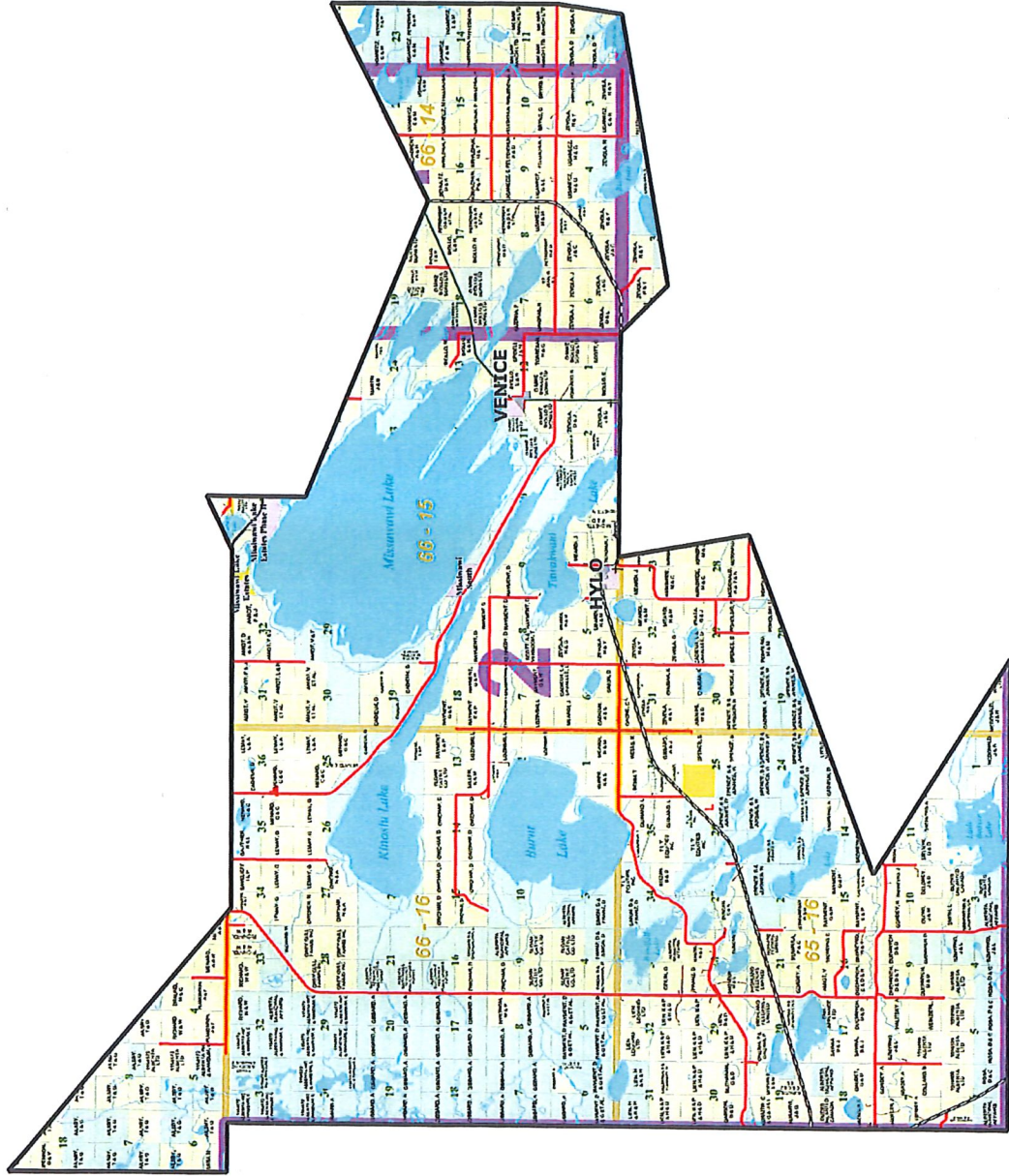




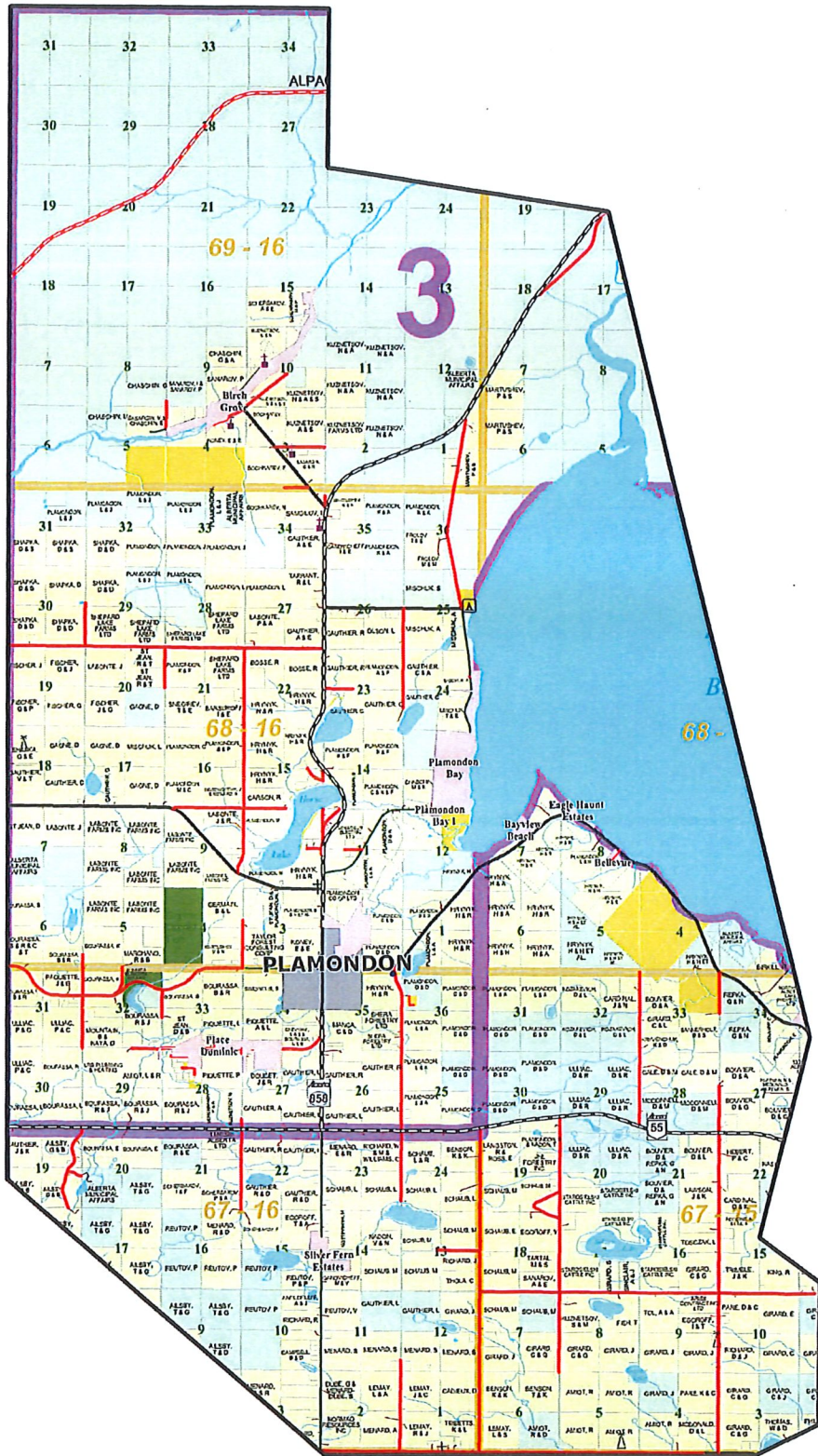
GRADER BEATS MAP AREA 04



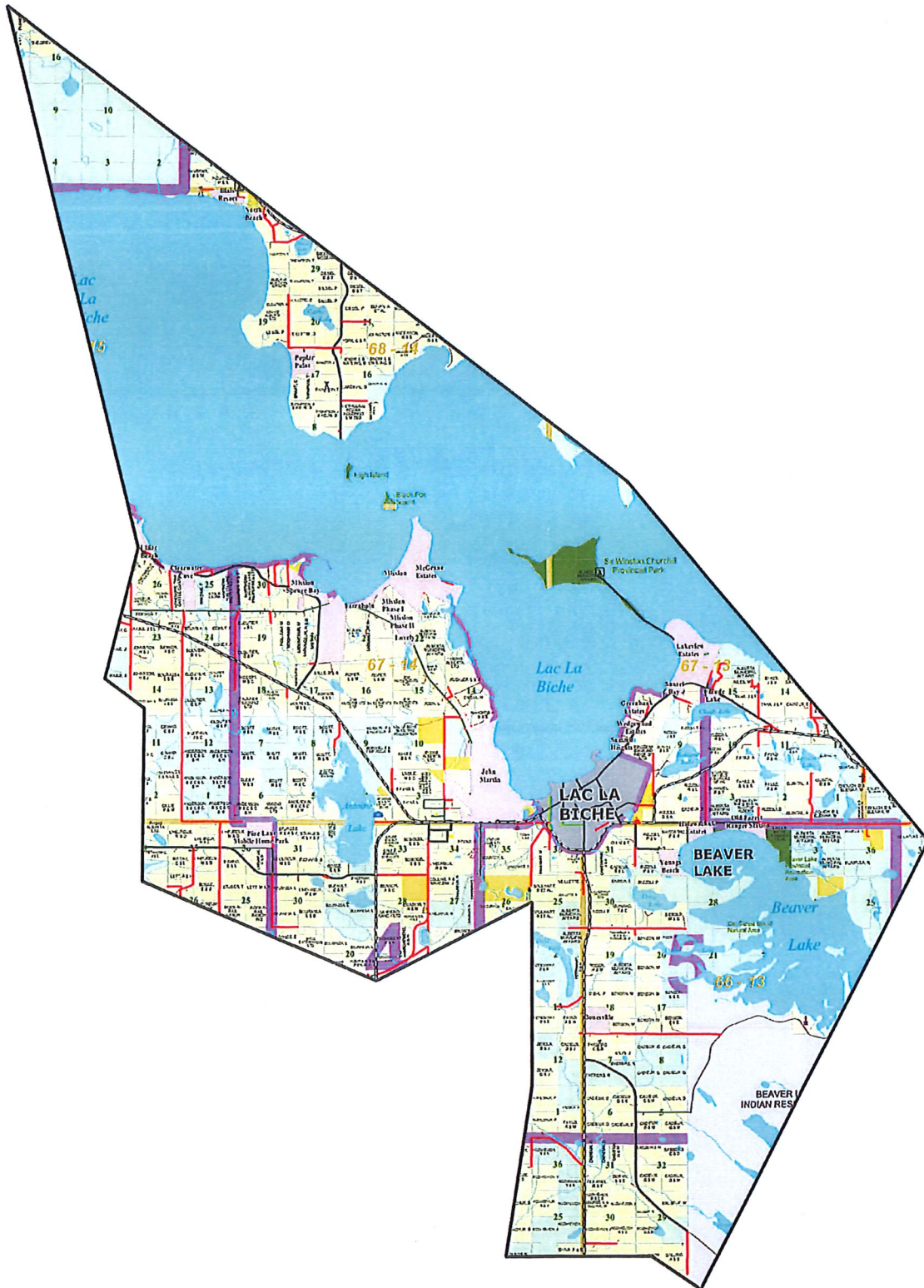
Lago La Biche County
welcoming by nature.



GRADER BEATS MAP AREA 05



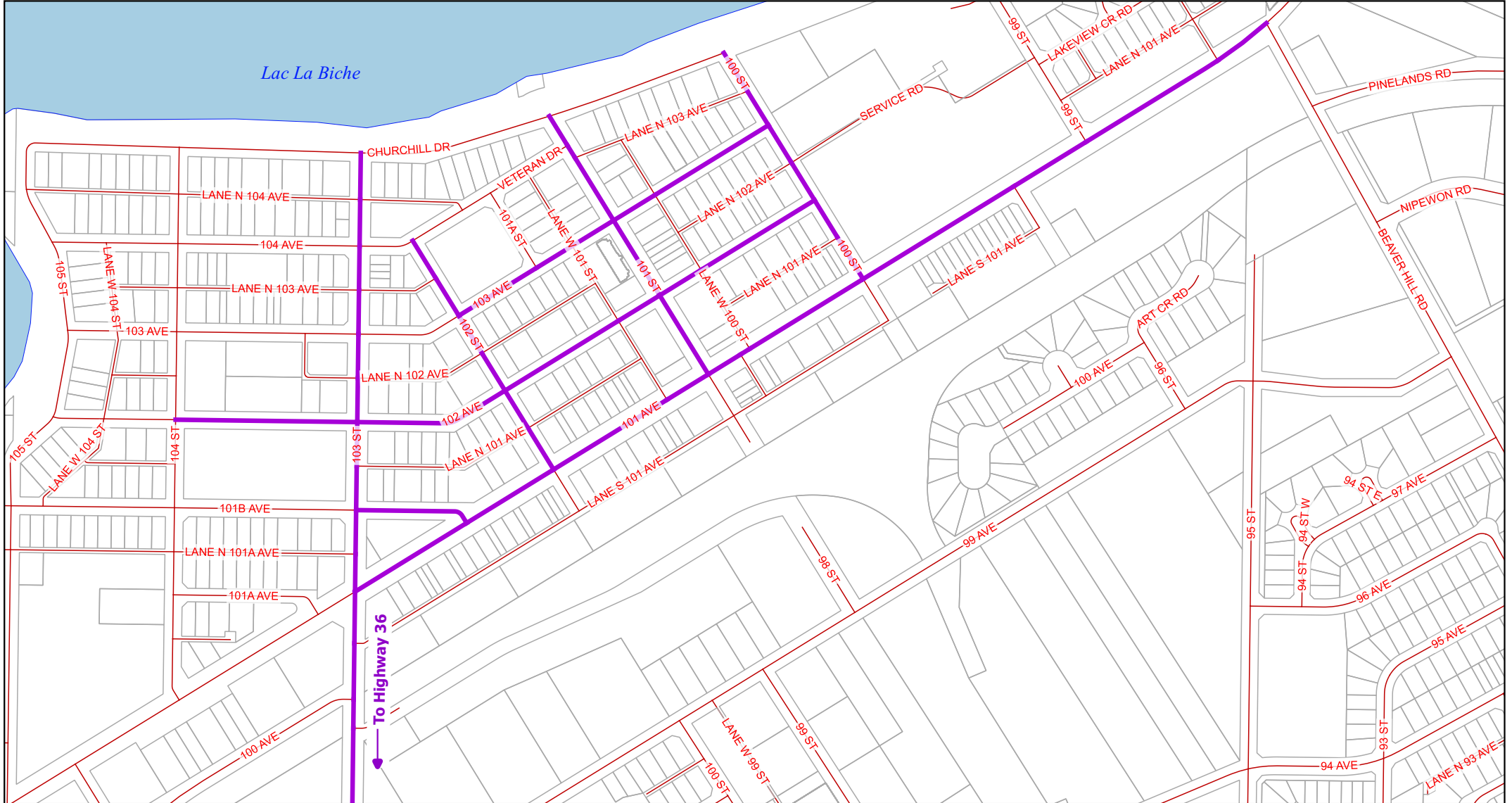
GRADER BEATS MAP AREA 06





Lac La Biche County
welcoming by nature.

Snow Pickup Business and Downtown Cores Zone 1



Map Produced: July 21, 2022

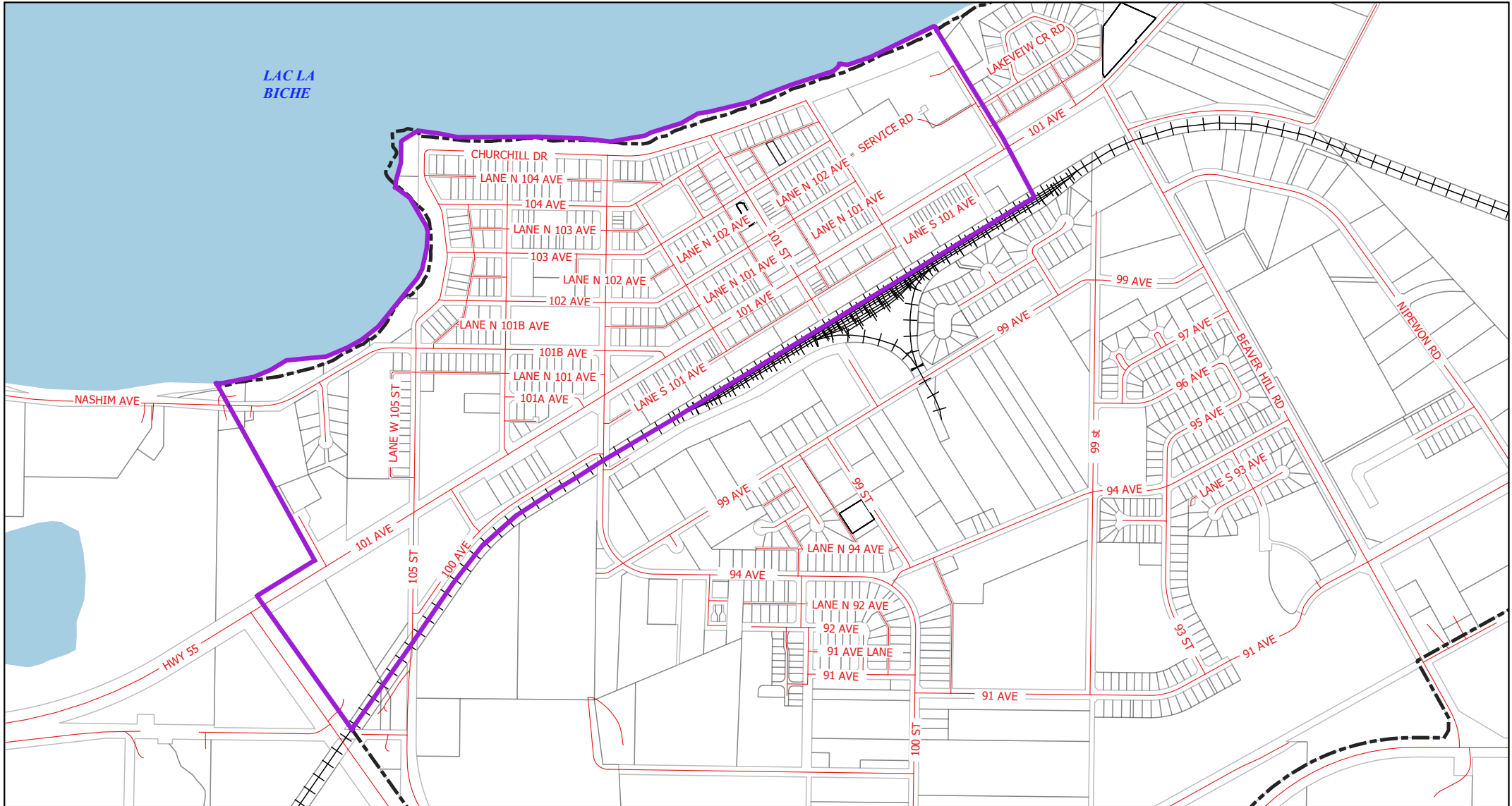
Projection: UTM12 NAD83

Lac La Biche County makes no representation or warranties regarding the information contained in this document, including, without limitation, whether said information is accurate or complete. Persons using this document do so solely at their own risk, and Lac La Biche County shall have no liability to such persons for any loss or damage whatsoever. This document shall not be copied or distributed to any person without the express written consent of Lac La Biche County.



Base Map compiled from the Provincial Title Mapping Digital Base.
Spatial Data Warehouse Ltd., November 2021. © 2022 Lac La Biche County. All Rights Reserved.

Snow Pickup Lac La Biche North Zone 2



Map Produced: October 1, 2021

Projection: UTM12 NAD83

Lac La Biche County makes no representation or warranties regarding the information contained in this document, including, without limitation, whether said information is accurate or complete. Persons using this document do so solely at their own risk, and Lac La Biche County shall have no liability to such persons for any loss or damage whatsoever. This document shall not be copied or distributed to any person without the express written consent of Lac La Biche County.

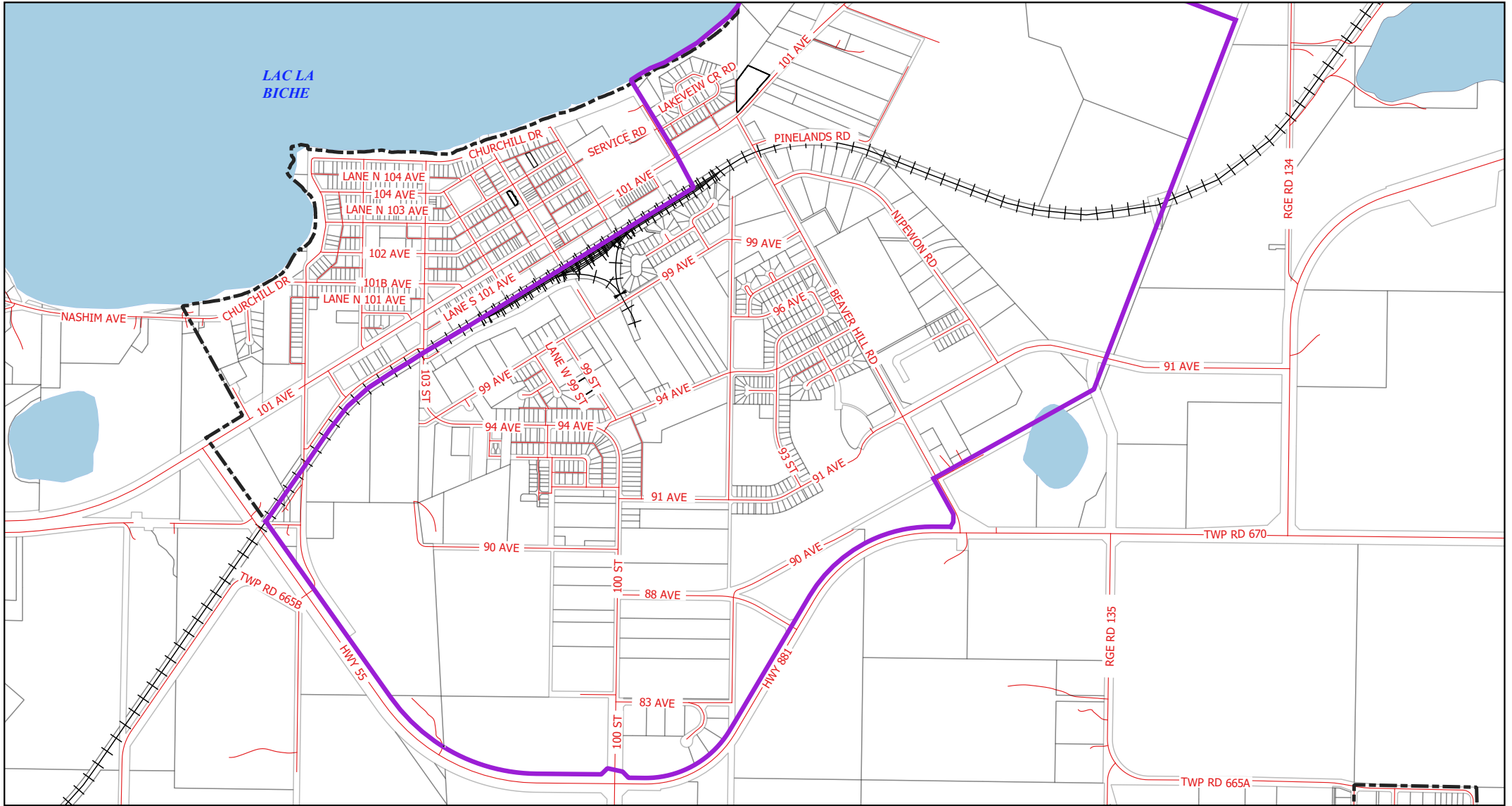
Base Map compiled from the Provincial Title Mapping Digital Base.
Spatial Data Warehouse Ltd., November 2020. © 2021 Lac La Biche County. All Rights Reserved.





Lac La Biche County
welcoming by nature.

Snow Pickup Lac La Biche South Zone 3



Map Produced: October 4, 2021

Projection: UTM12 NAD83

0 0.5 1 1.5 km



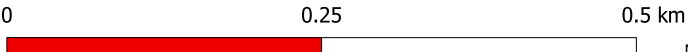
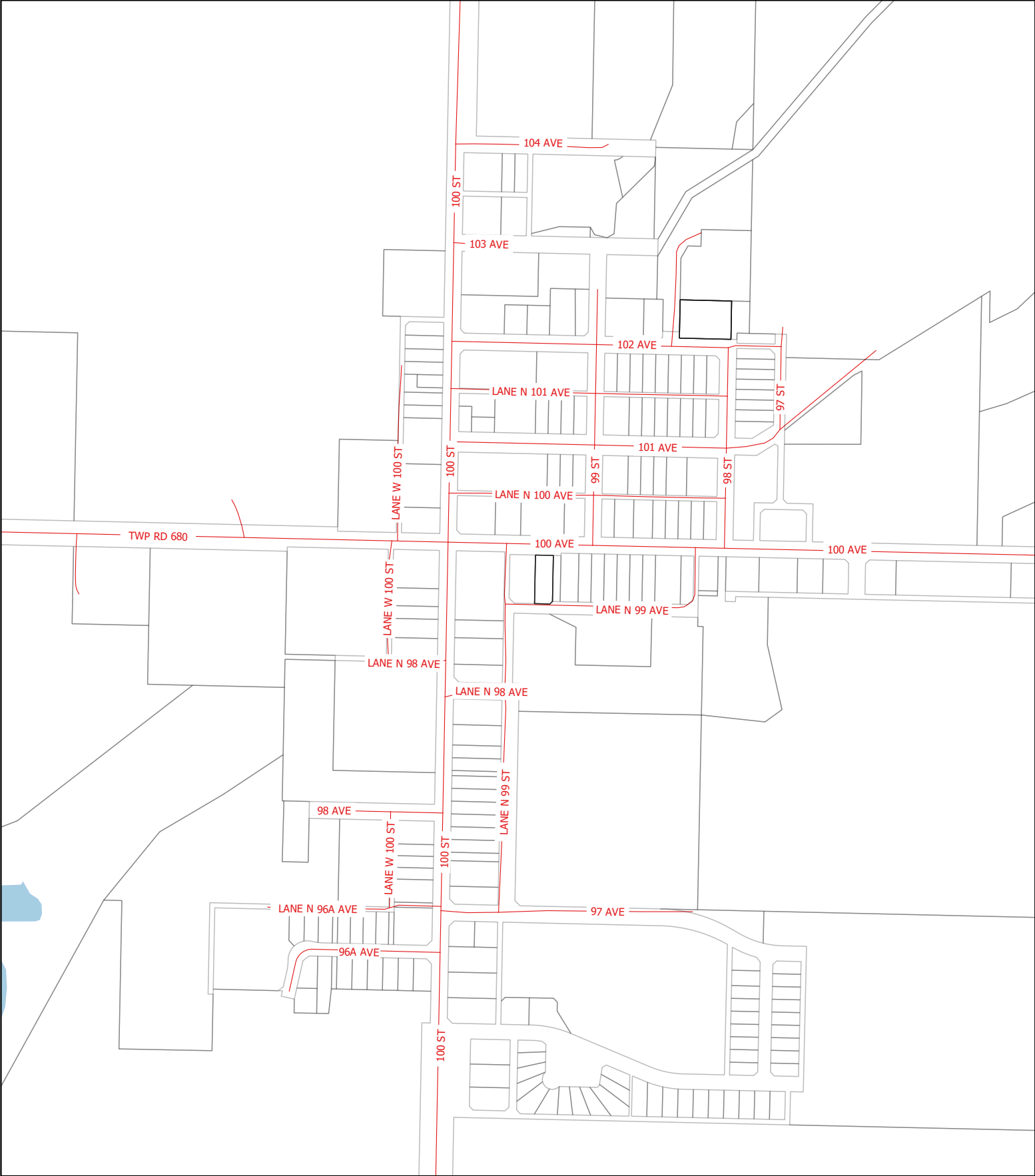
Lac La Biche County makes no representation or warranties regarding the information contained in this document, including, without limitation, whether said information is accurate or complete. Persons using this document do so solely at their own risk, and Lac La Biche County shall have no liability to such persons for any loss or damage whatsoever. This document shall not be copied or distributed to any person without the express written consent of Lac La Biche County.

Base Map compiled from the Provincial Title Mapping Digital Base.
Spatial Data Warehouse Ltd., November 2020. © 2021 Lac La Biche County. All Rights Reserved.



Lac La Biche County
welcoming by nature.

Schedule A Snow Pickup Plamondon Zone 4



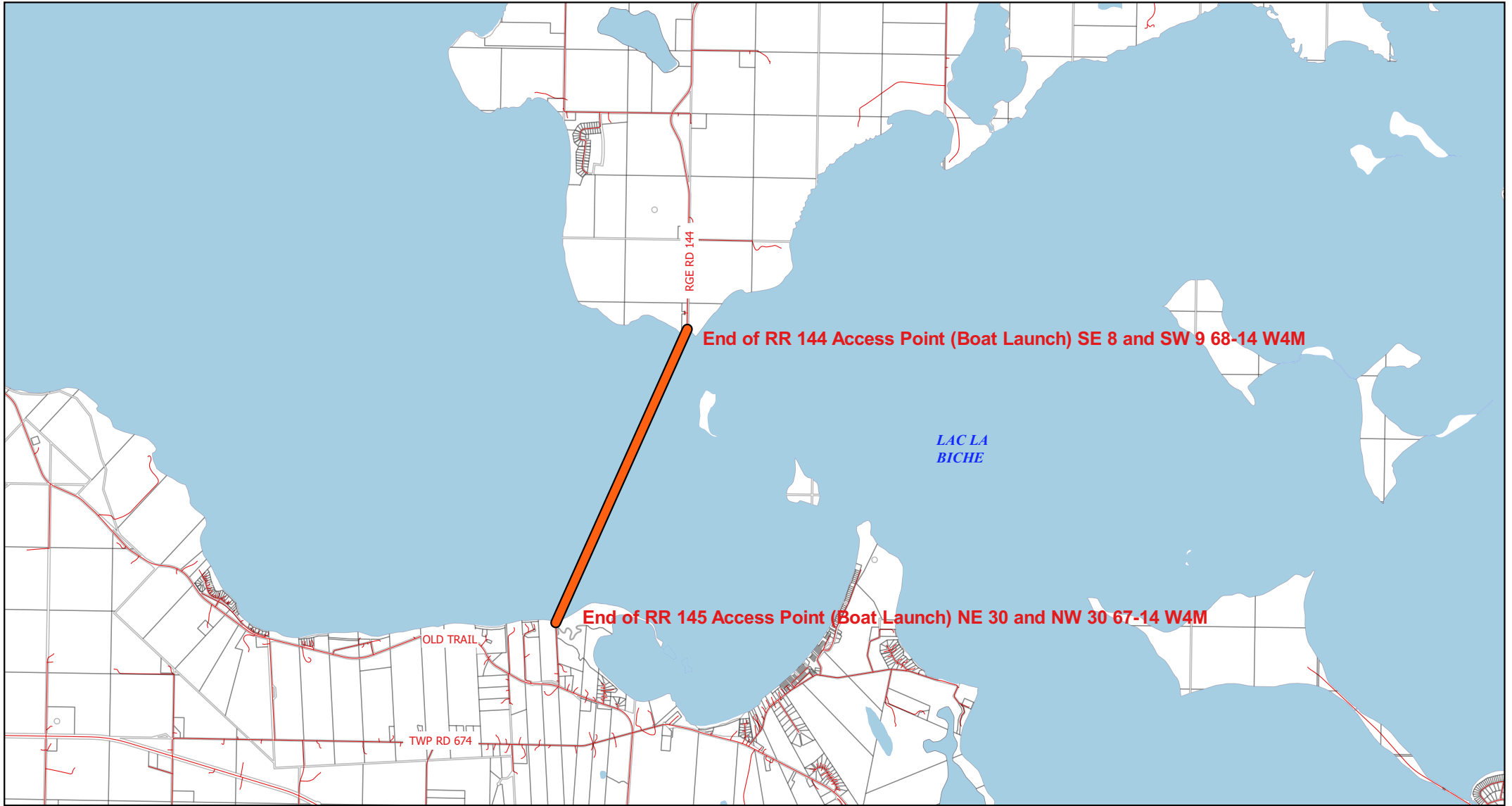
Map Produced: October 4, 2021

Projection: UTM12 NAD83

Lac La Biche County makes no representation or warranties regarding the information contained in this document, including, without limitation, whether said information is accurate or complete. Persons using this document do so solely at their own risk, and Lac La Biche County shall have no liability to such persons for any loss or damage whatsoever. This document shall not be copied or distributed to any person without the express written consent of Lac La Biche County.

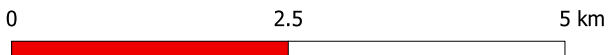
Base Map compiled from the Provincial Title Mapping Digital Base.
Spatial Data Warehouse Ltd., November 2020. © 2021 Lac La Biche County. All Rights Reserved.

Ice Road



Map Produced: October 4, 2021

Projection: UTM12 NAD83



Lac La Biche County makes no representation or warranties regarding the information contained in this document, including, without limitation, whether said information is accurate or complete. Persons using this document do so solely at their own risk, and Lac La Biche County shall have no liability to such persons for any loss or damage whatsoever. This document shall not be copied or distributed to any person without the express written consent of Lac La Biche County.

Base Map compiled from the Provincial Title Mapping Digital Base.
Spatial Data Warehouse Ltd., November 2020. © 2021 Lac La Biche County. All Rights Reserved.