

**LAC LA BICHE COUNTY**  
**PLANNING & DEVELOPMENT**  
**STRATEGIC SESSION**

**DATE:** February 7, 2013  
**TIME:** 10:30 a.m.  
**PLACE:** Council Chambers  
COUNTY CENTRE

**AGENDA**

1. CALL TO ORDER
2. ADOPTION OF AGENDA
3. IN CAMERA SESSION
  - 3.1 10:30 a.m. Land Matter (sec 16 FOIP).
4. NEW BUSINESS
  - 4.1 1:30 p.m. Draft Municipal Development Plan (MDP) Review.
5. INFORMATION
6. ADJOURNMENT

**LAC LA BICHE COUNTY  
STRATEGIC SESSION – RE: PLANNING & DEVELOPMENT  
COUNTY CENTRE, LAC LA BICHE**

**February 7, 2013 – 10:30 a.m.**

Minutes of the Lac La Biche County Strategic Session held on February 7, 2013 at 10:30 a.m.

**CALL TO ORDER** Mayor Langevin called the meeting to order at 10:32 a.m.

<b>PRESENT</b>	Aurel Langevin	Mayor
	Alvin Kumpula	Councillor
	Robert Richard	Councillor
	Guy Piquette	Councillor
	Eugene Uganecz	Councillor
	MJ Siebold	Councillor
	Tim Thompson	Councillor
	Gail Broadbent-Ludwig	Councillor/Deputy Mayor (entered at 10:41 a.m.)
	John Nowak	Councillor (entered at 10:39 a.m.)

<b>STAFF IN ATTENDANCE</b>	Roy Brideau	Chief Administrative Officer
	Gordon Frank	General Manager, Planning, Community Development & Protective Services
	Dave Dittrick	Acting Manager, Planning & Development
	Joanne Onciul	Legislative Services Coordinator
	Lonna Hoggan	Legislative Services Liaison

**ADOPTION OF AGENDA**

SS.13.014 Motion by Councillor Piquette to approve the February 7, 2013 Strategic Session agenda as presented.

**CARRIED UNANIMOUSLY**

**IN CAMERA SESSION**

SS.13.015 Motion by Councillor Kumpula to go in camera at 10:34 a.m.

**CARRIED UNANIMOUSLY**

3.1 Land Matter (section 16 FOIP).

SS.13.016 Motion by Councillor Uganecz to proceed with the meeting out of camera at 11:40 a.m.

**CARRIED UNANIMOUSLY**

## **BUSINESS ARISING OUT OF “IN CAMERA SESSION”**

3.1 Land Matter (section 16 FOIP).

No Action Required.

## **RECESS**

Mayor Langevin called a recess at 11:40 a.m.

## **RECONVENE**

Mayor Langevin reconvened the meeting at 1:30 p.m. with all those Members of Council previously listed in attendance.

## **NEW BUSINESS**

4.1 Draft Municipal Development Plan (MDP) Review.

Mayor Langevin welcomed the delegation. Dave Dittrick, Acting Manager, Planning & Development introduced Thomm Stubbs of Stantec who appeared in person, and Dave McRae of Stantec who appeared via telephone.

Thomm Stubbs presented a power-point presentation with respect to the draft Municipal Development Plan, as attached to and forming part of these minutes.

A discussion ensued regarding the Municipal Development Plan and the future of predominant land use. It was noted that there is a need for additional industrial areas within Lac La Biche County and a further need to ensure that the previous Municipal Development Plan of the Town of Lac La Biche and Lakeland County be integrated into this plan.

It was noted that contentious issues may arise due to ongoing development growth and most lands being in close proximity to water bodies and residential areas.

It was noted that maps required updating. Mr. Brideau ensured an updated map will be provided.

Further discussions ensued regarding:

- Using light industrial and highway industrial as buffers;
- Recreation and Open Space concepts – illustrate the potential and existing recreational facilities, future trail and park opportunities, and the potential for future school sites;

- The potential to join the Holowachuk Estates trail with Young's Beach trail along the lake as opposed to along the highway;
- The urgency for Lac La Biche County to have a Municipal Development Plan in place by the end of March, 2013;
- The Wetlands policy and the need to incorporate the same into the Municipal Development Plan.

It was confirmed that a redraft of the Municipal Development Plan will be provided and that Stantec will work with Administration to complete the same. The draft will first go to the Land Use Planning Task Force and then to Council for its consideration.

Mayor Langevin thanked the delegation for their presentation.

### **IN CAMERA SESSION**

SS.13.017 Motion by Councillor Nowak to go in camera at 3:40 p.m.

**CARRIED UNANIMOUSLY**

4.1 Land Matter (section 16 FOIP) – additional file.

Deputy Mayor Broadbent-Ludwig left Council Chambers at 3:40 p.m. due to a conflict of interest as the matter being discussed involved one of her clients.

Deputy Mayor Broadbent-Ludwig returned to Council Chambers at 3:50 p.m.

SS.13.018 Motion by Councillor Piquette to proceed with the meeting out of camera at 3:57 p.m.

**CARRIED UNANIMOUSLY**

### **BUSINESS ARISING OUT OF "IN CAMERA SESSION"**

4.1 Land Matter (section 16 FOIP) – additional file.

No Action Required.

**ADJOURNMENT**

SS.13.019 Motion by Councillor Uganecz to adjourn the Strategic Session of February 7, 2013 at 4:00 p.m.

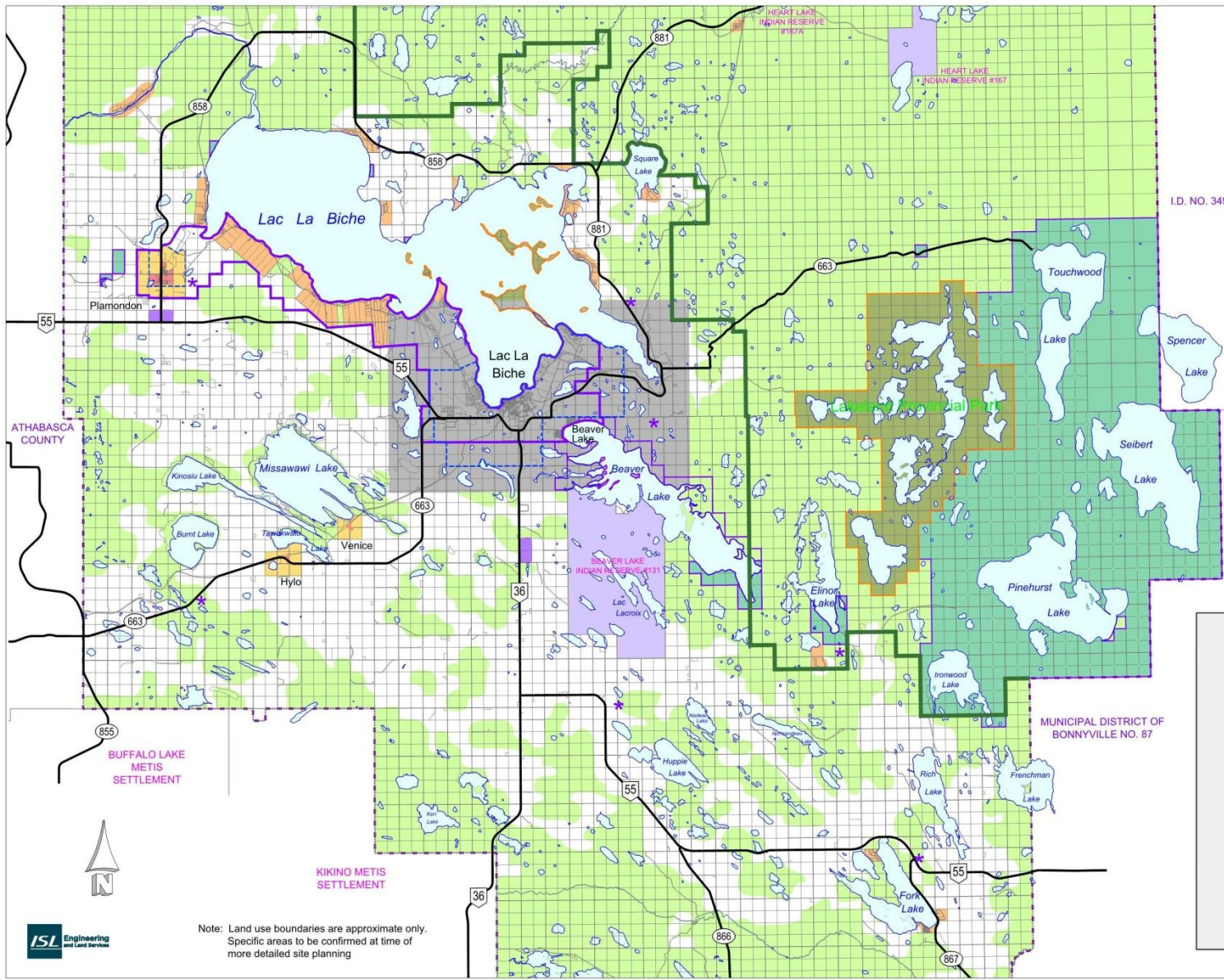
**CARRIED UNANIMOUSLY**

---

**Aurel Langevin, Mayor**

---

**J. Roy Brideau, CLGM, CMM  
Chief Administrative Officer**



**Legend**

- Hamlet
- Estate Residential
- Hamlet Growth Area Zone
- Industrial
- Provincial Park
- Natural / Recreation Area
- Crown Land †
- First Nation
- Lac La Biche Detail Map
- Agricultural
- Water / Sewer Policy Area
- Urban Service Area
- Green Zone Boundary
- \* Active Landfill

† Crown Land area may contain private land

ATHABASCA COUNTY

I.D. NO. 349

MUNICIPAL DISTRICT OF BONNYVILLE NO. 87

**FUTURE LAND USE CONCEPT**

LAC LA BICHE COUNTY  
MUNICIPAL DEVELOPMENT PLAN

Scale 1 : 250,000

Lac La Biche County  
welcoming by nature.

February 2013

Note: Land use boundaries are approximate only.  
Specific areas to be confirmed at time of more detailed site planning





### FUTURE PREDOMINANT LAND USE LAC LA BICHE AREA DETAIL

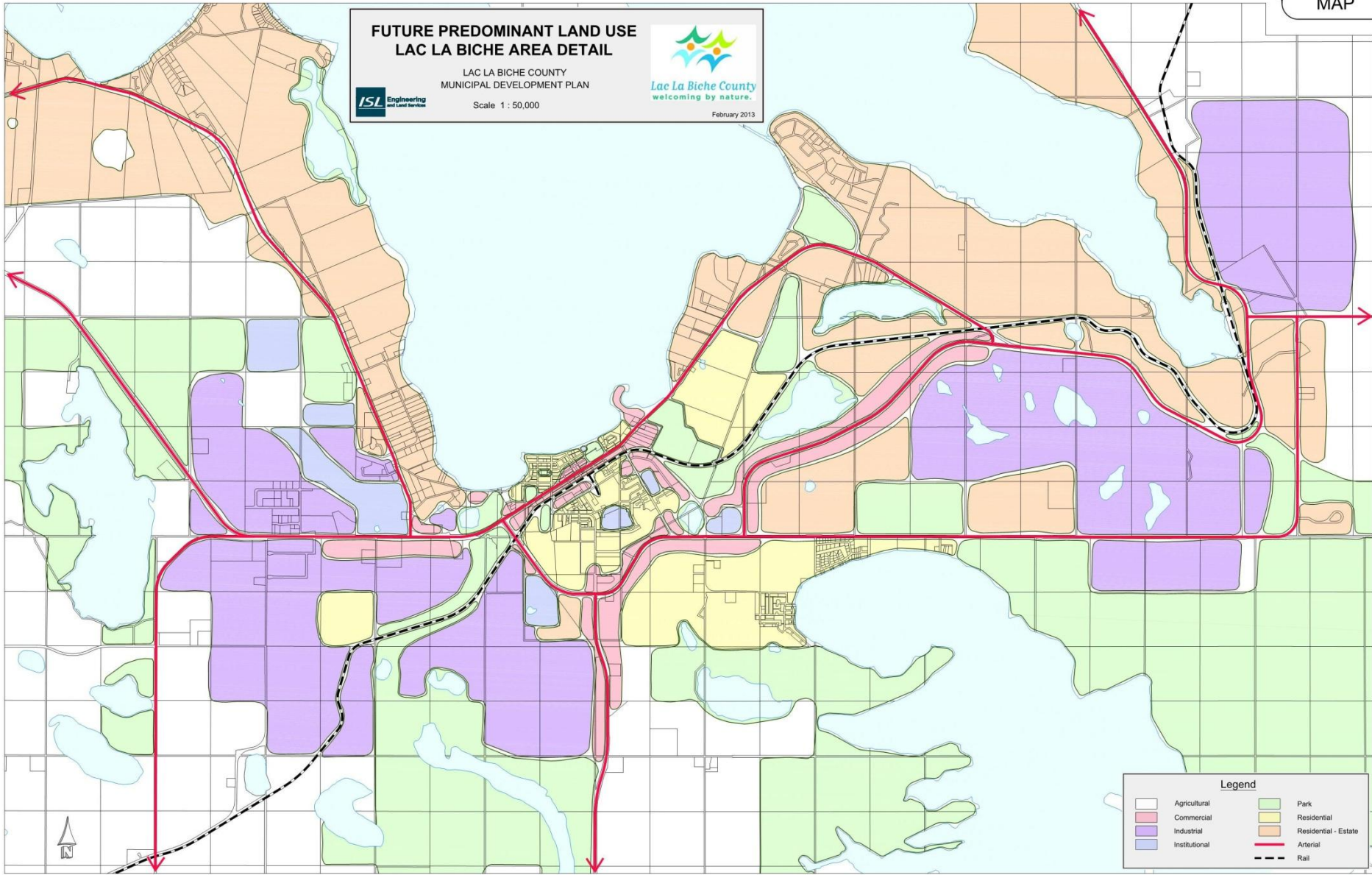
LAC LA BICHE COUNTY  
MUNICIPAL DEVELOPMENT PLAN



Scale 1 : 50,000



February 2013



#### Legend

- |               |                      |
|---------------|----------------------|
| Agricultural  | Park                 |
| Commercial    | Residential          |
| Industrial    | Residential - Estate |
| Institutional | Arterial             |
|               | Rail                 |



# FUTURE PREDOMINANT LAND USE LAC LA BICHE AREA DETAIL

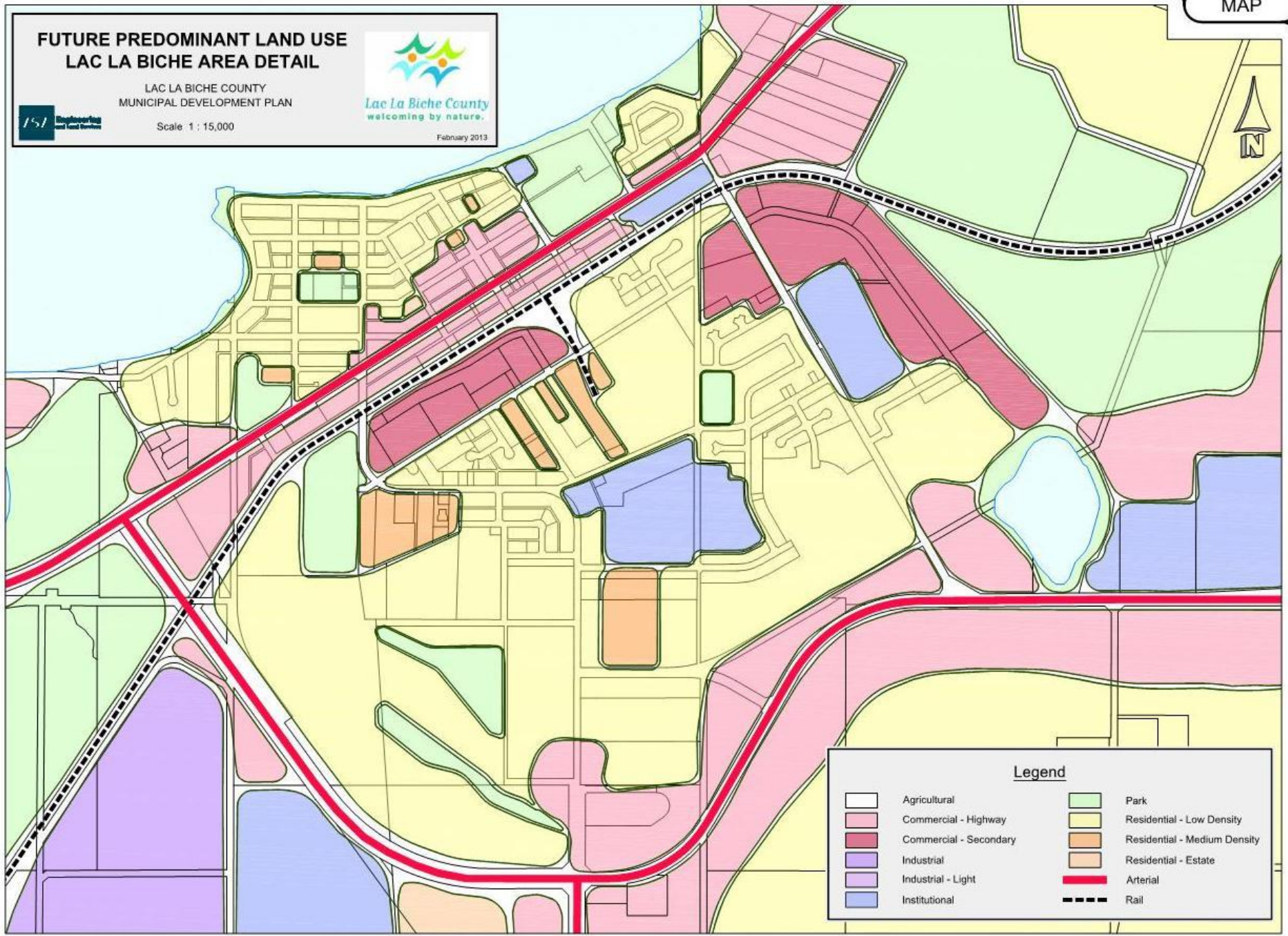
LAC LA BICHE COUNTY  
MUNICIPAL DEVELOPMENT PLAN



Scale 1 : 15,000



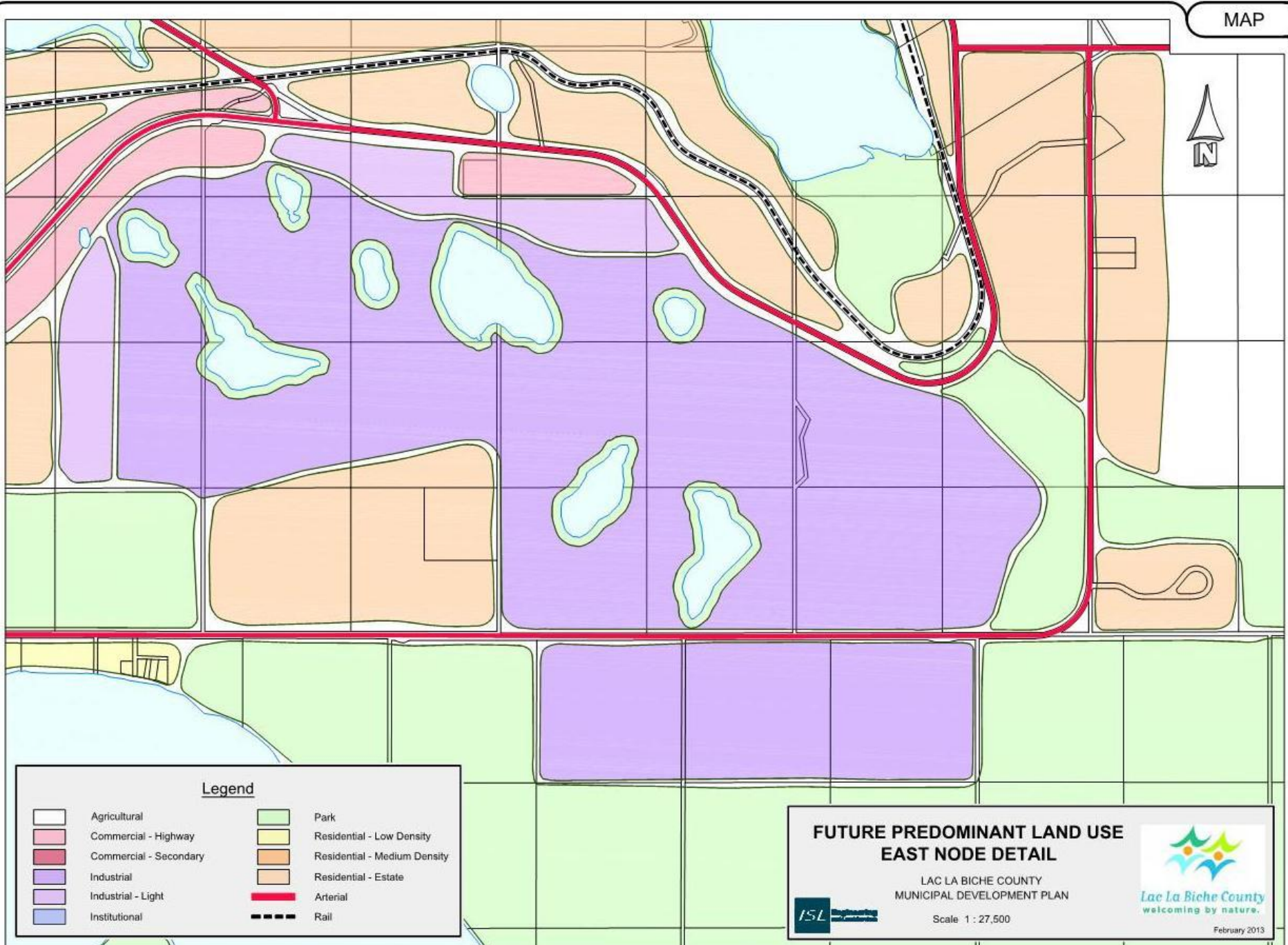
February 2013



### Legend

- |   |                        |   |                              |
|---|------------------------|---|------------------------------|
|  | Agricultural           |  | Park                         |
|  | Commercial - Highway   |  | Residential - Low Density    |
|  | Commercial - Secondary |  | Residential - Medium Density |
|  | Industrial             |  | Residential - Estate         |
|  | Industrial - Light     |  | Arterial                     |
|  | Institutional          |  | Rail                         |





**Legend**

- |  |                        |   |                              |
|--|------------------------|---|------------------------------|
|  | Agricultural           |  | Park                         |
|  | Commercial - Highway   |  | Residential - Low Density    |
|  | Commercial - Secondary |  | Residential - Medium Density |
|  | Industrial             |  | Residential - Estate         |
|  | Industrial - Light     |  | Arterial                     |
|  | Institutional          |  | Rail                         |

**FUTURE PREDOMINANT LAND USE  
EAST NODE DETAIL**

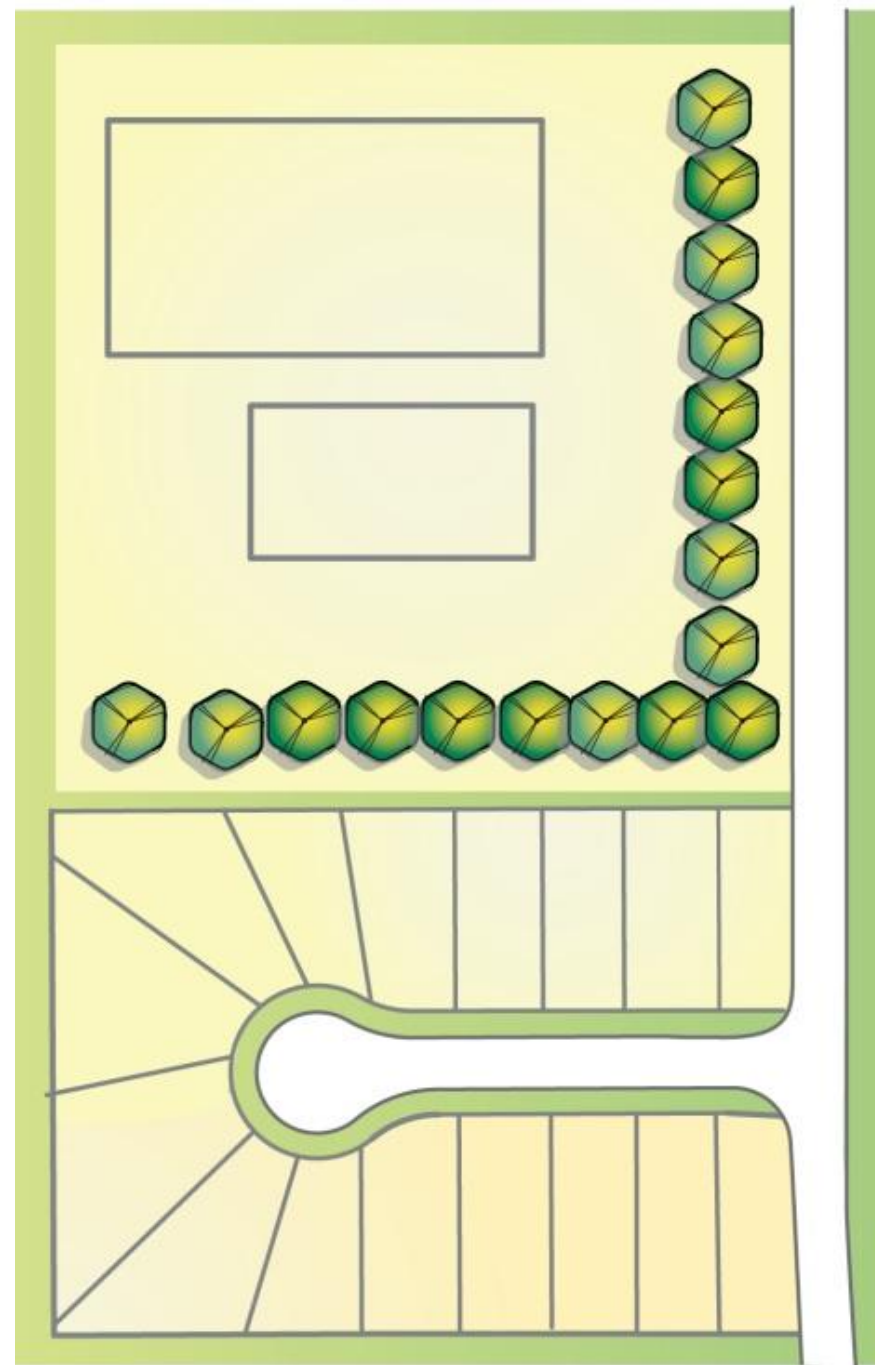
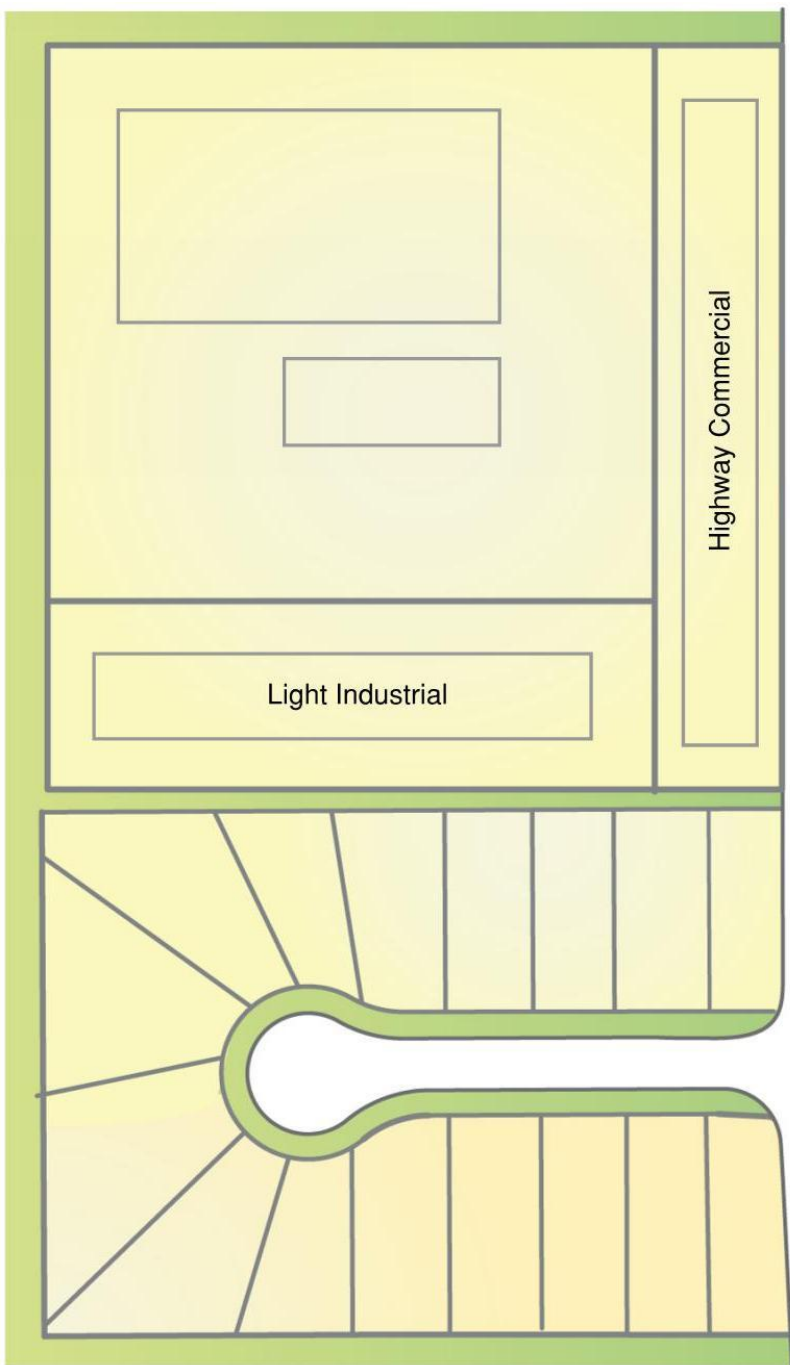
LAC LA BICHE COUNTY  
MUNICIPAL DEVELOPMENT PLAN

Scale 1 : 27,500



February 2013







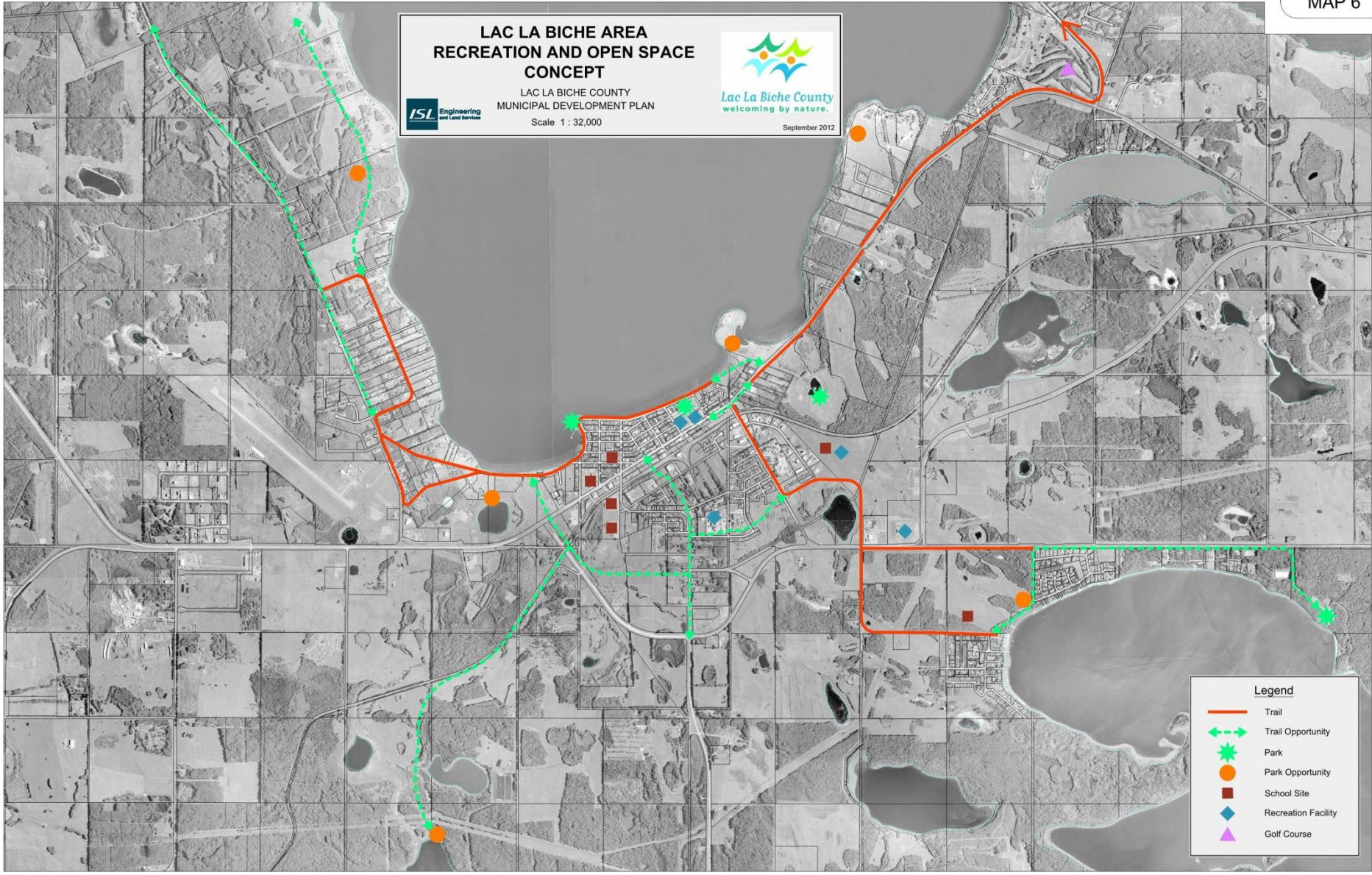
# LAC LA BICHE AREA RECREATION AND OPEN SPACE CONCEPT

LAC LA BICHE COUNTY  
MUNICIPAL DEVELOPMENT PLAN

Scale 1 : 32,000



September 2012



**Legend**

- Trail
- Trail Opportunity
- Park
- Park Opportunity
- School Site
- Recreation Facility
- Golf Course