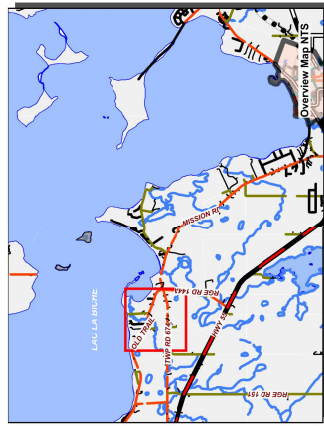


- RESIDENTIAL DISTRICTS**
- Narrow Lot Single Detached Dwelling (NSD)
  - Medium Density Hamlet Residential (MDR)
  - Estate Small Lot Residential 1 (ES1)
  - Country Residential (CR)
  - Mobile Home Community (MHC)
  - Resort Recreational (RR)
  - Rural Residential Work/Live (RRW)
  - Low Density Residential (LDR)
  - High Density Hamlet Residential (HDR)
  - Estate Small Lot Residential 2 (ES2)
  - On-site Estate Residential 1 (OE1)
  - On-site Estate Residential 2 (OE2)
  - Restricted Residential Large Lot (RR)

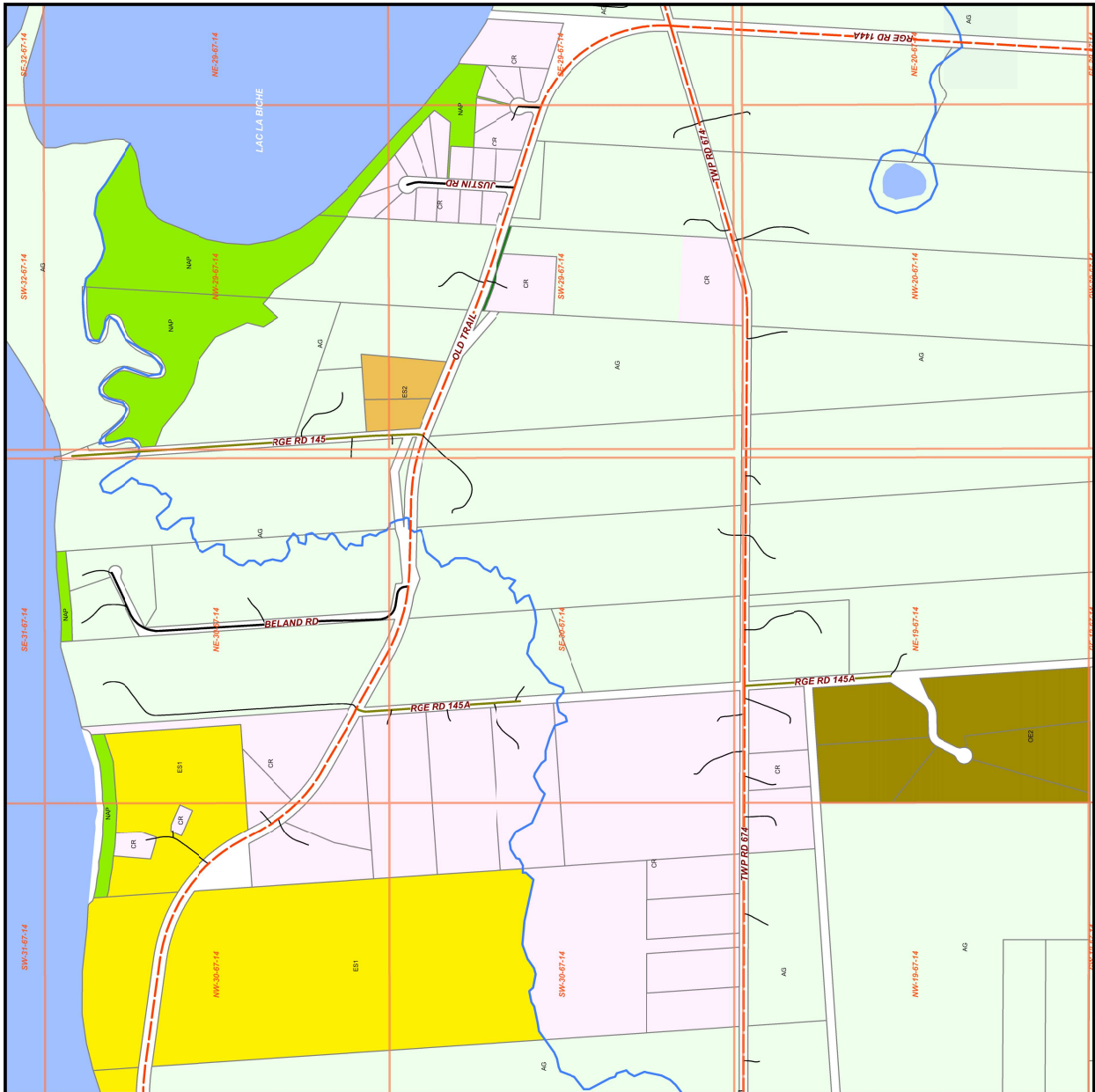
- COMMERCIAL DISTRICTS**
- Central Commercial (CC)
  - Highway Commercial (HC)
  - Neighbourhood Commercial (NC)
  - Rural Commercial (RC)
  - Mixed Use Residential - Business (MREB)
  - Hamlet Commercial Business (HCB)
- PUBLIC SERVICES DISTRICTS**
- Urban Reserve (UR)
  - Public Institutional (PI)
  - Natural Area Protection (NAP)
  - Parks and Recreation (PR)

- INDUSTRIAL DISTRICTS**
- Light Industrial (LI)
  - Hamlet Light Industrial (HLI)
  - General Industrial (GI)
  - Heavy Industrial (HI)
  - Airport (A)
- DIRECT CONTROL DISTRICTS**
- Direct Control 1 (DC1)
  - Direct Control 2 (DC2)
  - Direct Control 3 (DC3)

- RESOURCES DISTRICTS**
- Agricultural (AG)
  - Crown Land (CL)



Scale 10,000



Map Sheet Updated: September 2017  
 Compiled from the Rural Cadastral Digital Base May 2017  
 Shaded Data Warehouses July 2017  
 All Rights Reserved.  
 Not to be copied in whole or in part.