

# Block Party

PARTY BLOCK KIT



Lac La Biche County  
welcoming by nature.

# Party Block Program

## Lac La Biche County Block Parties

### What is a block party?

A block party invites families and friends in a neighbourhood for an evening of food, games, and fun in the great outdoors. Neighbours can meet and greet while bonding during a barbecue, picnic, or pot luck.

Knowing your neighbours results in safer, more caring neighbourhoods.



## TOP 5 REASONS TO HAVE A BLOCK PARTY

1

To build new friendships. Knowing who you live beside means a safer, friendlier neighbourhood.

2

To maintain your connection with old friends. Keep up with your neighbours and strengthen community spirit.

3

To promote diversity. Teach others about your unique culture and traditions.

4

To help your children meet new friends. There's nothing like fresh air and outdoor games to build new friendships.

5

To exchange skills or resources. Swap recipes, help one another with DIY home projects, and share your talents.

# Planning your Block Party

## What type of block parties work best?

### Barbecues

- Organizers purchase all required food and neighbours contribute financially.
- A barbecue can also be done potluck-style, with everyone bringing their own meat and a side to share.

### Picnics

- Everyone brings their own meal
- Organizers plan a variety of games and activities for attendees.

### Potlucks

- Everyone brings one dish to share. Encourage guests to bring the recipes in case of allergies.

### Cook-off

- Turn your event into a friendly competition by have your neighbours prepare their version of a dish (ex. chili) to be sampled by everyone.

## How big should I make the block party?

- Start off with a smaller event, and keep it simple. You can always grow your event, or plan a larger one for next time.
- Use your neighbourhood's natural boundaries (like the end of the block) to select your invitees. If you're planning a street or cul-de-sac party, include everyone in that area.

## Organizers' Role

As the organizing group, you'll need to:

- Decide the event set-up, and plan out food, activities, and games.
- Greet everyone at the event.
- Introduce new neighbours, and help them meet new people.
- Oversee clean-up at the end.

## Location

Use a common, accessible public space. Think of options like parks, streets, or other public land (in compliance with Lac La Biche County bylaws and procedures).

You can also use your own yard, a garage (in the event of rain), or a common room at a condo unit.



# Planning your Block Party

## Getting the Word Out

- Talk to your neighbours! Get the word out that you'd like to plan a block party by going door-to-door. People will often offer their help.
- You can also encourage neighbours to learn about block parties through flyers, door hangers, and social media (like Facebook). Suggest several times and dates before committing to one to encourage attendance.
- Once you have your neighbours' attention, involve them in the planning process. Decide on a date together, and divide responsibilities. One person can be in charge of creating flyers, and another can deliver them. Yet another person can handle RSVPs, and plan the meal to ensure a good variety.

## Lac La Biche County Road Closure Permission

- Local road closures may be permitted for a block party. As your safety is our priority, some road closure requests may not be accommodated. Permit approvals will also be subject to your neighbours' consent.

**To request a road closure, see page 7 of this kit.**

## Event Timing

For a first-time block party, plan to distribute your first flyer with several proposed dates and options for event types (i.e. barbecue, picnic, etc.) three to four weeks before the event.

Once the organizers have looked at all the suggestions, send out the final flyer with a date, time, and other event details two weeks beforehand. Note that weekends or holidays are often the best times to hold your event.

Be sure to have a back-up location or date planned, just in case you're rained out.

If young children or seniors live near the party area, plan to finish by 9 pm.

## DID YOU KNOW?

Lac La Biche County has recreation kits you can borrow for your block party. The kits include the following items:

- pylons;
- pool noodles;
- hula hoops;
- jump ropes;
- frisbees; and
- bean bags.

*It is the responsibility of the Organizer to ensure that any and all equipment loaned out as part of the Community Block Party package is accounted for and returned in the same condition as it was when it was signed out. Lac La Biche County staff will review equipment contents and complete inventory before and after event with Organizers as part of the block party process.*

*\*Organizers/Renters may be invoiced for repairs that are over and beyond regular wear and tear or be charged full replacement value of equipment or items that are broken or missing.*



# Planning your Block Party

## Event Setup Tips

- Use a sign-in sheet to build a contact list for the next block party.
- Make sure that name tags are available.
- Set up tables for food, and have a few garbage cans available in convenient spots.
  - *Moreover, decide whether you'll plan to bring tables, chairs, plates, cutlery, cups, and beverages, or if everyone should bring their own.*
- Think about whether you'll need barbecues, and where you'll get them from.
- Have a bathroom policy in mind.
- Decide if pets will be allowed.

## Security and Emergency Access

- Observe security precautions by keeping back doors locked and equipment in sight.
- Don't play loud music.
- Keep emergency vehicle access in mind when setting up the event.

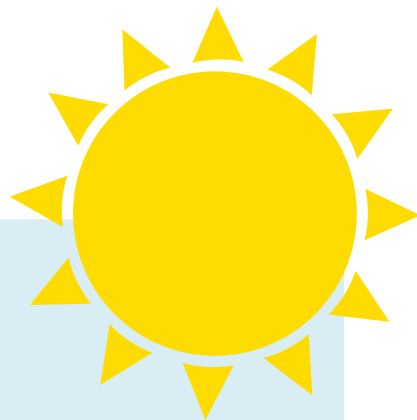


# Activity Ideas

## Summer

Visiting and eating is a big part of any block party, but here are some activity ideas to spice things up:

- Encourage your neighbourhood's talent to come forward: you could be living next to a musician, singer, dancer, artist, DJ, or award-winning chef!
- See if there's general interest in activities like a book club, or walking and running groups.
- Try an outdoor movie if you have a projector set up. It's perfect for warm summer nights.
- Set up a photo booth and make some memories.



## Winter

Block parties don't need to end when the summer does. Think about holding block parties during the fall and winter too by combining indoor and outdoor activities like:

- Sledding on public hills or skating/hockey at County rinks.
- Holding a dinner at a community hall.
- Hosting a potluck in your home.
- Snowman or snow fort building contests.
- Crafting clubs for knitting, quilting, etc.



## Kids

Plan plenty of kids' activities, too. Here are some ideas:

- Sidewalk chalk drawing contests
- Lawn twister
- Scavenger hunts
- Face painting
- Bubble battle with bubble blowers
- Bean bag toss, horseshoe toss, and other lawn games
- Basketball, street hockey, or soccer
- Crafts



# Party Block Registration Form

If you require County services (recreation kit, road closure), please fill out this form and return it to FCSS a minimum 14 days before the event. A minimum of 50% of the area blocked must sign the sign-up sheet on the following page. Once the form and sign-up sheet are completed and returned to FCSS, you will be eligible for a \$100 gift card to use for food/supplies.

## Contact Information

Contact name: \_\_\_\_\_

Phone number: \_\_\_\_\_

Email address: \_\_\_\_\_

Are you interested in borrowing a recreation kit?

☐

Yes

☐

No

## Additional Notes:

## Block Party Information

Block Party location: \_\_\_\_\_

Proposed date: \_\_\_\_\_

Start time: \_\_\_\_\_ End time: \_\_\_\_\_

Rain date: \_\_\_\_\_

Food being offered:

☐

Potluck (Shared Dishes for Everyone)

☐

BBQ (Shared BBQ Dishes for Everyone)

☐

Picnic (Supply Food for Your Own Family)

☐

Catered (Food Supplied by a Catering Company)

*County Peace officers will visit your block party to introduce themselves, talk briefly about crime prevention and County bylaws, and hand out items to youth at the event. Peace Officers will also attend near the event's end to ensure that block parties are compliant with the noise bylaw, and that all roads are open again.*

Number of households invited: \_\_\_\_\_

Number of picnic tables requested (max of 8): \_\_\_\_\_

Do you require a road closure? If yes, how many barricades do you need (one per lane of traffic)?

When completed, please contact Lise for the next steps:

**Trish Leduc**

*Community Outreach Worker*

*FCSS & Community Development*

**Phone:** 780-623-6726

**Email:** trish.leduc@laclabichedcounty.com

# Block Party Sign-up Sheet

Date of Block Party: \_\_\_\_\_ Main contact of Block Party: \_\_\_\_\_

*A minimum of 50% of the area blocked must sign-up in agreement.*

[illegible]



# YOU'RE INVITED

to a neighborhood block party!

Date: \_\_\_\_\_

Time: \_\_\_\_\_

Location: \_\_\_\_\_

*We are asking each family to bring:*

\_\_\_\_\_ Chairs \_\_\_\_\_ Salad or dessert to share

\_\_\_\_\_ Meat or vegetarian food to  
barbecue for your family \_\_\_\_\_ Beverages for your family

Other: \_\_\_\_\_

## TO RSVP:

Your block party host is: \_\_\_\_\_

To contact them, please call: \_\_\_\_\_

or email: \_\_\_\_\_

**Block Party**  
PARTY BLOCK



# YOU'RE INVITED

to a neighborhood block party!

Date: \_\_\_\_\_

Time: \_\_\_\_\_

Location: \_\_\_\_\_

*We are asking each family to bring:*

\_\_\_\_\_ Chairs \_\_\_\_\_ Salad or dessert to share

\_\_\_\_\_ Meat or vegetarian food to  
barbecue for your family \_\_\_\_\_ Beverages for your family

Other: \_\_\_\_\_

## TO RSVP:

Your block party host is: \_\_\_\_\_

To contact them, please call: \_\_\_\_\_

or email: \_\_\_\_\_

**Block Party**  
PARTY BLOCK





# NEIGHBORHOOD BLOCK PARTY

Date: \_\_\_\_\_

Time: \_\_\_\_\_

Location: \_\_\_\_\_

For more information, contact:

