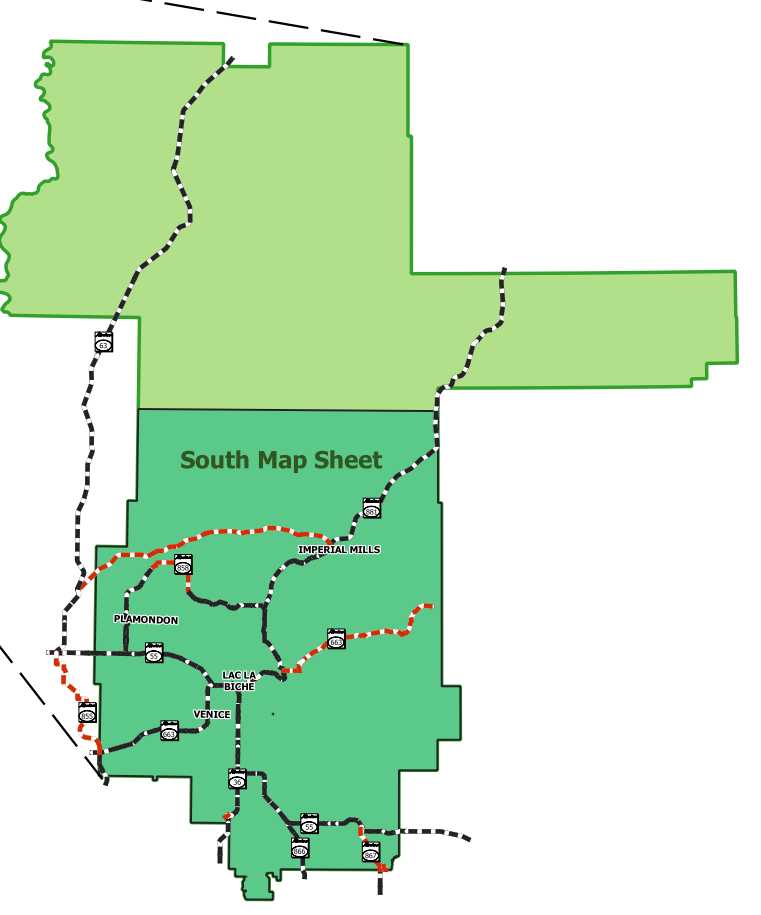
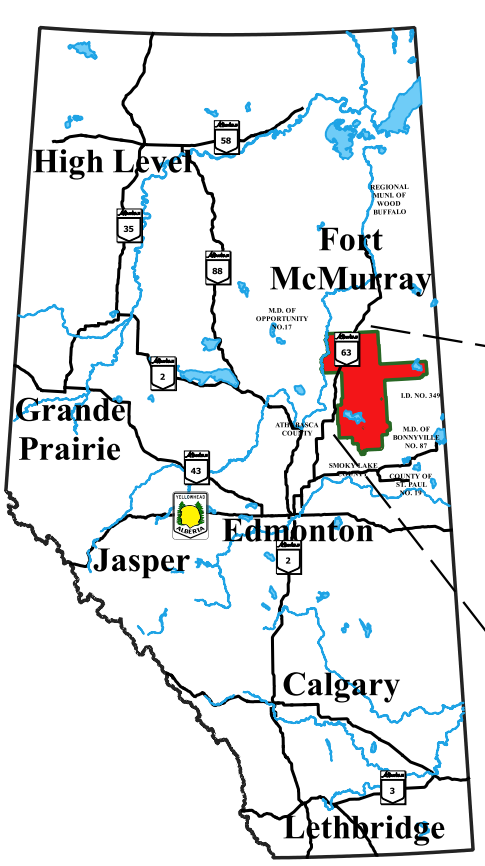
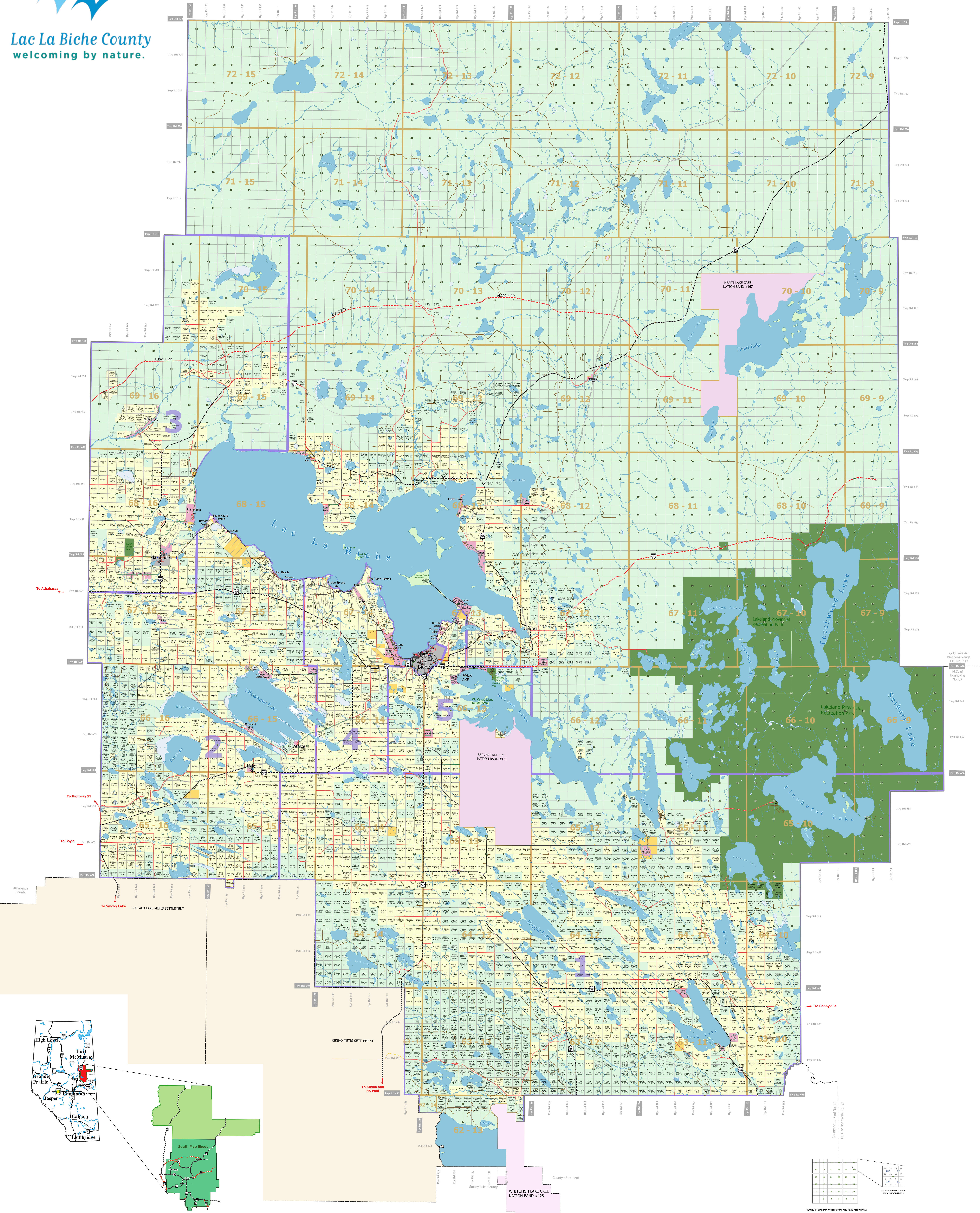




Lac La Biche County
welcoming by nature.

Lac La Biche County 2025 Ownership Map



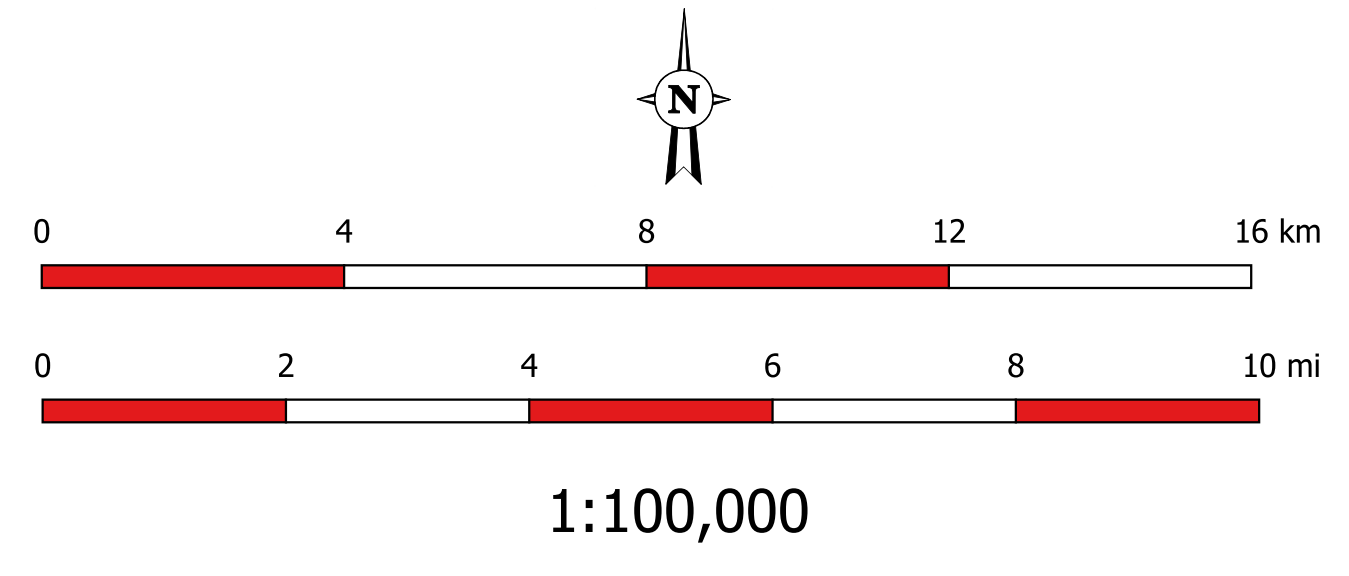
Lac La Biche County makes no representations or warranties regarding the information contained in this document, including, without limitation, whether said information is accurate or complete. Persons using this document do so solely at their own risk, and Lac La Biche County shall have no liability to such persons for any loss or damage whatsoever.

This document shall not be copied or distributed to any person without the express written consent of Lac La Biche County.

© 2025 Lac La Biche County. All Rights Reserved.

Compiled from the Rural Cadastral Digital Base, July 15, 2025, 1:20,000 Digital Base.
Land Ownership compiled from municipal tax data, July 25, 2025.
Building/Site/Feature information compiled from municipal assessment data, December 2024.

NOT RESPONSIBLE FOR ERRORS OR OMISSIONS



Legend	
Transportation	Map Points
Gravel Highway	Campground
Paved Highway	Cemetery
Private Roads	Church
Oil Road	Community Hall
Other Roads	Fire Hall
Railway	Hotel/Motel
	Landfill
	Municipal Office
	Tower
	Water Treatment Plant
	Indian Reserve
	Metis Settlement
	Provincial Park
	Council Ward Boundary
	Subdivisions
	Hamlet Boundary
	Titled Property
	Crown Land

**Lac La Biche County
Ownership Map
South Map Sheet**

Projection: NAD83 / Alberta 10-TM (Resource) Date: August 12, 2025

Box 1679, Range Road 135 S.H.663
Lac La Biche, Alberta
T0A 2C0

Phone: (780) 623-1747
Fax: (780) 623-2039