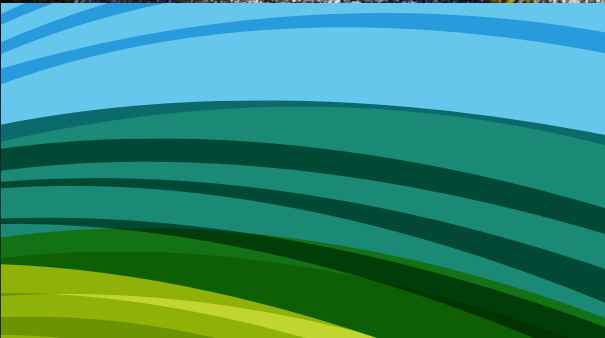




Lac La Biche County
welcoming by nature.

Lac La Biche County:

Strategic Plan 2019-2024





MAYOR'S MESSAGE

In 2018, Lac La Biche County Council asked: what do we imagine the County looking like in six years? To this end, we came up with a vision of our ideal community, and adopted strategic priorities in areas like economic development and recreation to make it a reality.

The Lac La Biche County Strategic Plan will simplify Council's decisions: by considering how new construction, hires, or services contribute to our vision, we will make more focused decisions about how to spend the County's limited resources.

This document is due to be reviewed again in 2022, after the current Council's term has ended. But we hope that this document, after a review by the newly-elected 2022 Council, will guide our community to 2024—and perhaps far beyond that.

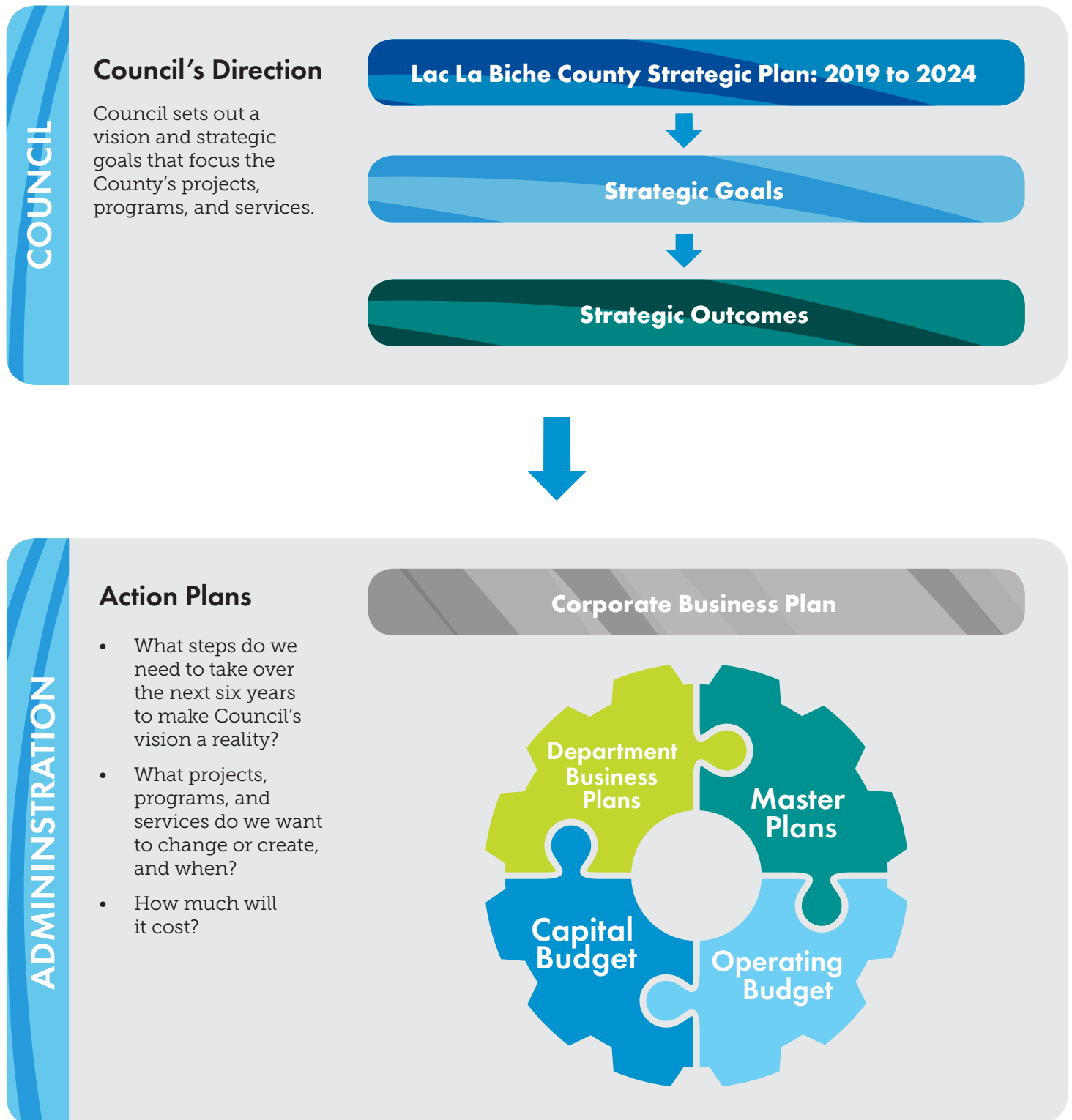
We are looking forward to seeing our County rise to its potential, becoming the diverse, healthy, and safe community that we envision.



Vision

Lac La Biche County is proud to be a diverse, healthy and safe community. Our citizens are engaged and enjoy enhanced social and recreational amenities. We are economically resilient as we continue to invest in top-quality infrastructure and services. We are environmental stewards who promote our natural assets, making Lac La Biche County the destination choice of northern Alberta.

How will we implement the plan?



How does the County deliver services?

Core Services

Core Services:

These are the basic services that we provide to taxpayers. This answers the question: "what do I get for my taxes?" Examples of core services include clearing streets of snow, issuing development permit decisions, or grading rural roads.

Corporate Initiatives

Corporate Initiatives:

These are projects that work towards the County's vision and strategic goals. Ideally, this is a three-year plan that prioritizes projects and includes clear timelines.

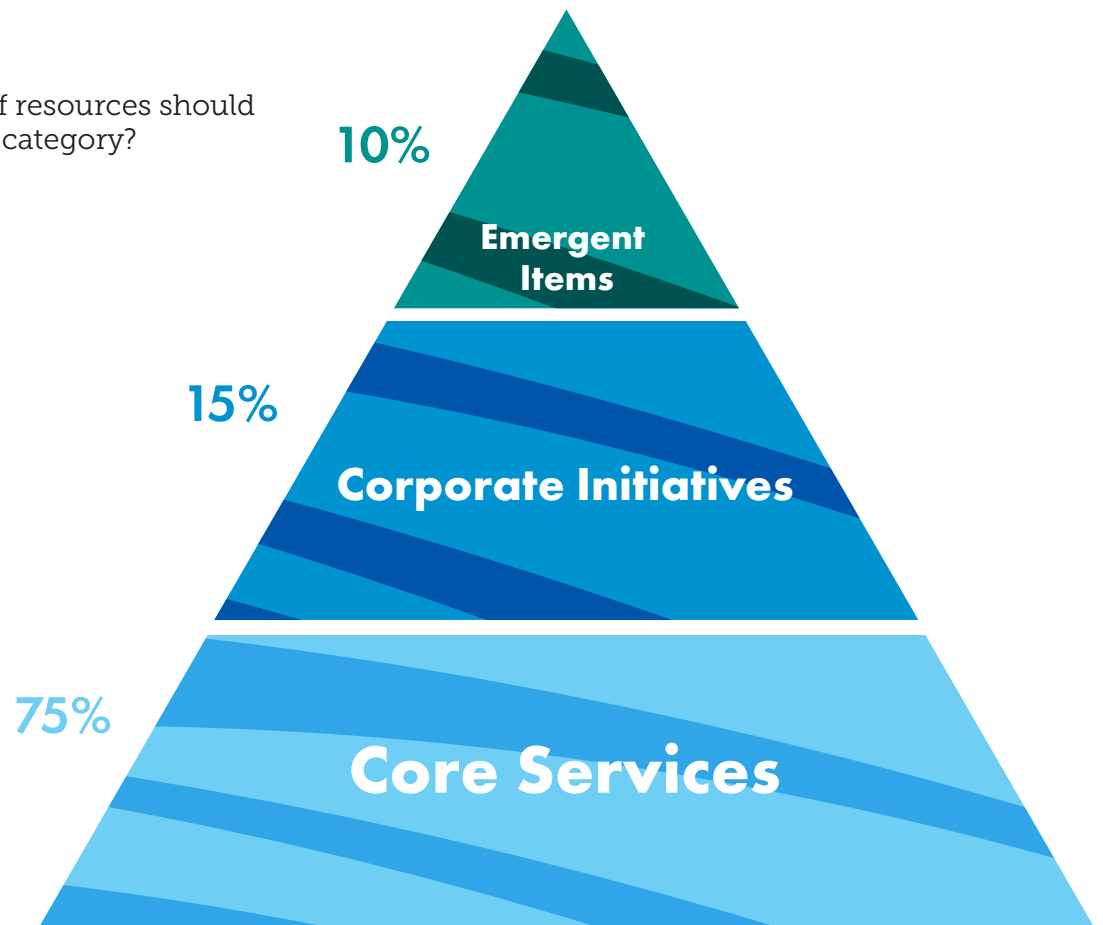
Emergent Items

Emergent Items:

These are daily customer service requests received by elected officials and staff. This is unplanned work that needs attention based on the urgency and severity of the request. Emergent items may include things like unplugging culverts, or fixing downed stop signs.

Service Breakdown

What percentage of staff resources should ideally be spent in each category?



Strategic Planning Hierarchy

Where does Council's Strategic Plan fit in with all the other plans?



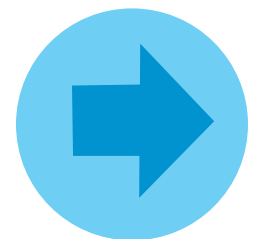


Photo: Lac La Biche Post

Strategic Goals **to 2024**

These five strategic goals make Council's vision more specific, including outcomes that County Administration will work towards achieving by 2022.

- 1. Economic Development:** Our Blueprint for Resilient Growth
- 2. Recreation and Culture:** Strengthening our Unique Assets
- 3. Social Wellness:** Maintaining a High Quality of Life for our Citizens
- 4. Tourism:** Marketing our Strengths
- 5. Environment:** Thoughtful Stewardship of our Natural Environment





Strategic Goal 1: Economic Development

We will focus our economic development efforts and continue to build partnerships with our business community to create a resilient County that remains prosperous.

Strategic Outcomes

- A diversified economy that sustains our community.
- Partnerships promoting business growth and retention.
- Physical and technological infrastructure is in place to support current and future business, industry, and agriculture.



Strategic Goal 2: Recreation and Culture

We will continue to invest in our recreational amenities, cultural services and supporting infrastructure to ensure our citizens and visitors have the opportunity to experience our multicultural and recreational diversity.

Strategic Outcomes

- Facilities and programs that promote the diversity of our community.
- Recreation opportunities that are available, accessible and affordable.
- Both rural and hamlet residents are considered in these opportunities.



Strategic Goal 3: Social Wellness

We will have safe communities and support the diverse needs of our citizens.

Strategic Outcomes

- Partnerships with local volunteer and community organizations to strengthen the County's ability to respond to the community's changing needs.
- Community involvement in proactive safety education.
- Access to affordable basic municipal services.



Strategic Goal 4: Tourism

We will focus our tourism and marketing efforts on what makes Lac La Biche County distinct, attracting visitors who can enjoy all we have to offer.

Strategic Outcomes

- Tourism contributes to our economic diversification.
- Partnerships with local and non-local industry to deliver diverse destination programs and activities.
- Community and organizational supports for tourism initiatives.



Strategic Goal 5: Environment

We will protect and sustain the valuable natural assets our citizens and visitors enjoy.

Strategic Outcomes

- Natural assets are sustained for current and future generations to enjoy.
- County operations lead by example with respect to environmental sustainability.
- Growth and development is encouraged while not compromising our natural assets.
- Appropriate and effective use of agricultural land.