

**RESIDENTIAL DISTRICTS**

- Narrow Lot Single Detached Dwelling (NSD)
- Medium Density Hamlet Residential (MDR)
- Estate Small Lot Residential 1 (ES1)
- Country Residential (CR)
- Mobile Home Community (MHC)
- Resort Recreational (RR)
- Rural Residential Work/Live (RRW)
- Low Density Residential (LDR)
- High Density Hamlet Residential (HDR)
- Estate Small Lot Residential 2 (ES2)
- On-site Estate Residential 1 (OE1)
- On-site Estate Residential 2 (OE2)
- Restricted Residential Large Lot (RR)

**COMMERCIAL DISTRICTS**

- Central Commercial (CC)
- Highway Commercial (HC)
- Neighbourhood Commercial (NC)
- Rural Commercial (RC)
- Mixed Use Residential - Business (MREB)
- Hamlet Commercial Business (HCB)
- Public Services Districts:
  - Urban Reserve (UR)
  - Public Institutional (PI)
  - Natural Area Protection (NAP)
  - Parks and Recreation (PR)

**INDUSTRIAL DISTRICTS**

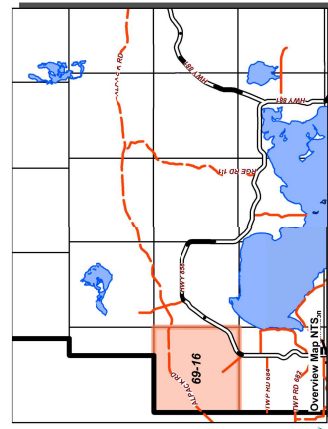
- Light Industrial (LI)
- Hamlet Light Industrial (HLI)
- General Industrial (GI)
- Heavy Industrial (HI)
- Airport (A)

**DIRECT CONTROL DISTRICTS**

- Direct Control 1 (DC1)
- Direct Control 2 (DC2)
- Direct Control 3 (DC3)

**RESOURCES DISTRICTS**

- Agricultural (AG)
- Crown Land (CL)



Scale 1:40,000

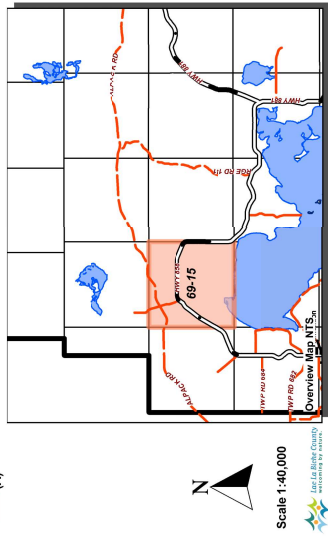
Map Sheet Updated: September 2017  
 Compiled from the Rural Cadastral Digital Base May 2017  
 Shaded Data Warehouses July 2017. All Rights Reserved.  
 Not to be copied in whole or in part.

- RESIDENTIAL DISTRICTS**
- Narrow Lot Single Detached Dwelling (NSD)
  - Medium Density Hamlet Residential (MDR)
  - Estate Small Lot Residential 1 (ES1)
  - Country Residential (CR)
  - Mobile Home Community (MHC)
  - Resort Recreational (RR)
  - Rural Residential Work/Live (RRW)
  - Low Density Residential (LDR)
  - High Density Hamlet Residential (HDR)
  - Estate Small Lot Residential 2 (ES2)
  - On-site Estate Residential 1 (OE1)
  - On-site Estate Residential 2 (OE2)
  - Restricted Residential Large Lot (RR)

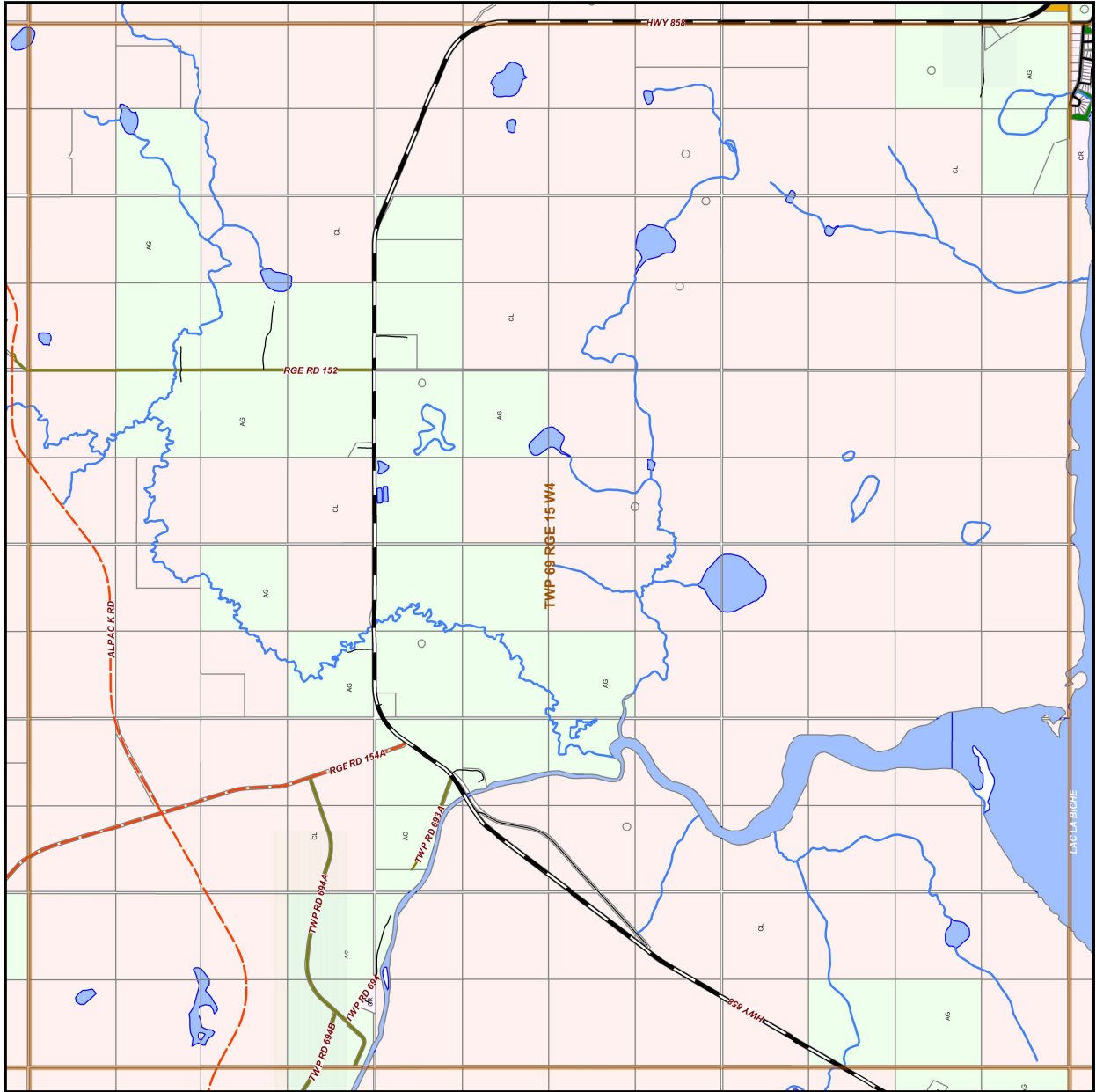
- COMMERCIAL DISTRICTS**
- Central Commercial (CC)
  - Highway Commercial (HC)
  - Neighbourhood Commercial (NC)
  - Rural Commercial (RC)
  - Mixed Use Residential - Business (MREB)
  - Hamlet Commercial Business (HC-B)
- PUBLIC SERVICES DISTRICTS**
- Urban Reserve (UR)
  - Public Institutional (PI)
  - Natural Area Protection (NAP)
  - Parks and Recreation (PR)

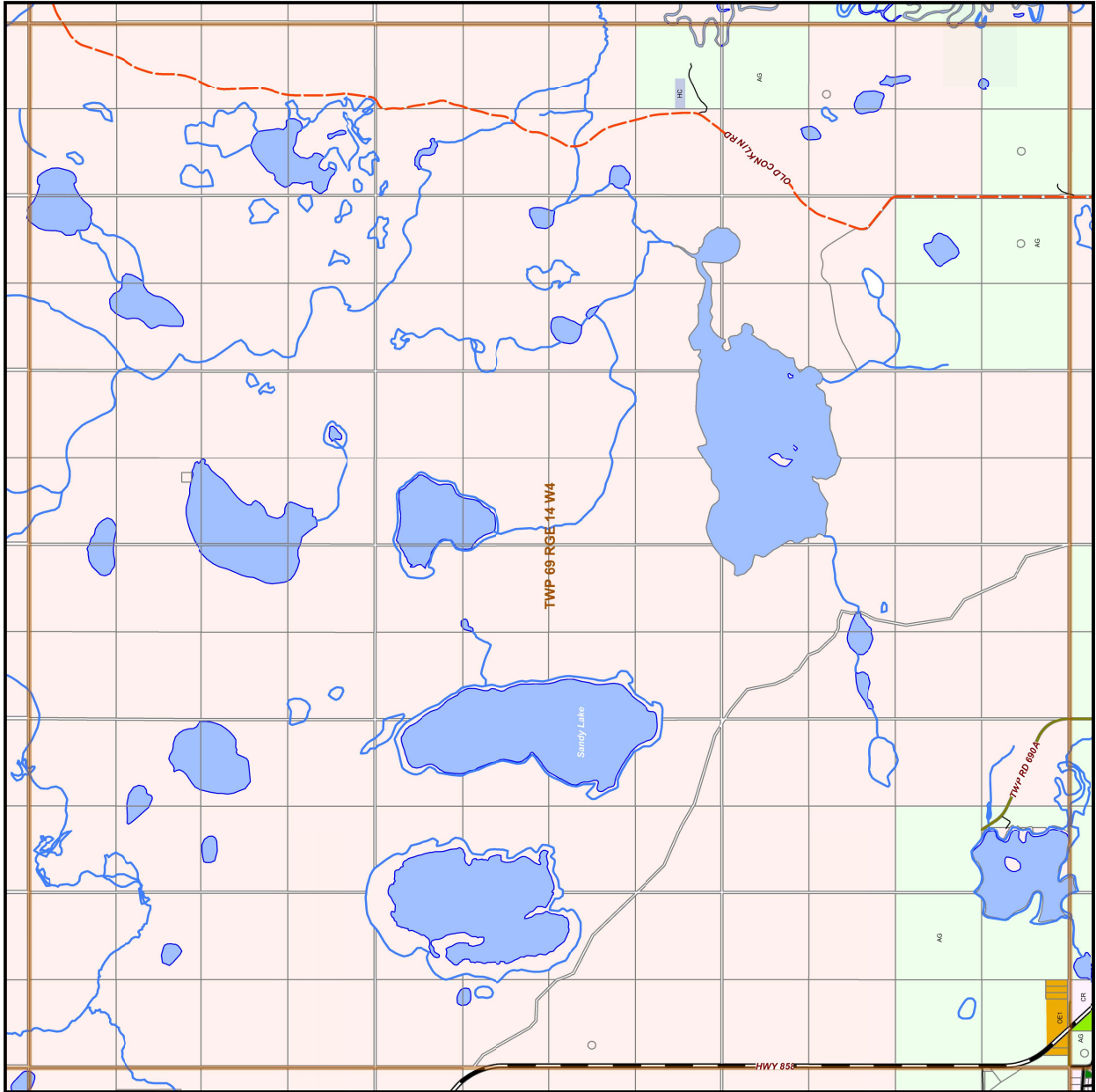
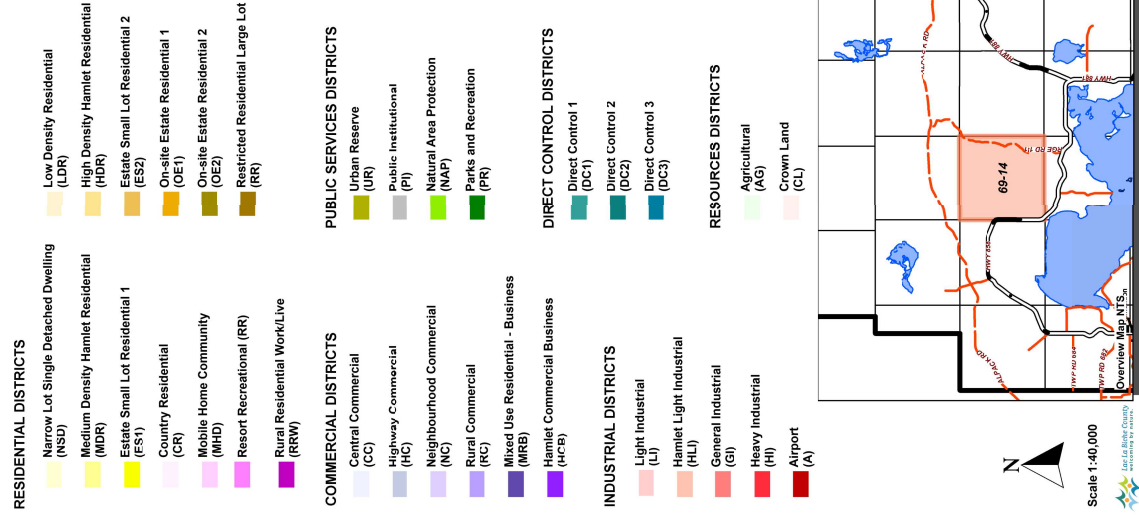
- INDUSTRIAL DISTRICTS**
- Light Industrial (LI)
  - Hamlet Light Industrial (HLI)
  - General Industrial (GI)
  - Heavy Industrial (HI)
  - Airport (A)
- DIRECT CONTROL DISTRICTS**
- Direct Control 1 (DC1)
  - Direct Control 2 (DC2)
  - Direct Control 3 (DC3)

- RESOURCES DISTRICTS**
- Agricultural (AG)
  - Crown Land (CL)



Map Sheet Updated: September 2017  
 Compiled from the Rural Cadastral Digital Base May 2017  
 Shaded Data Warehouses July 2017. All Rights Reserved.  
 Not to be copied in whole or in part.





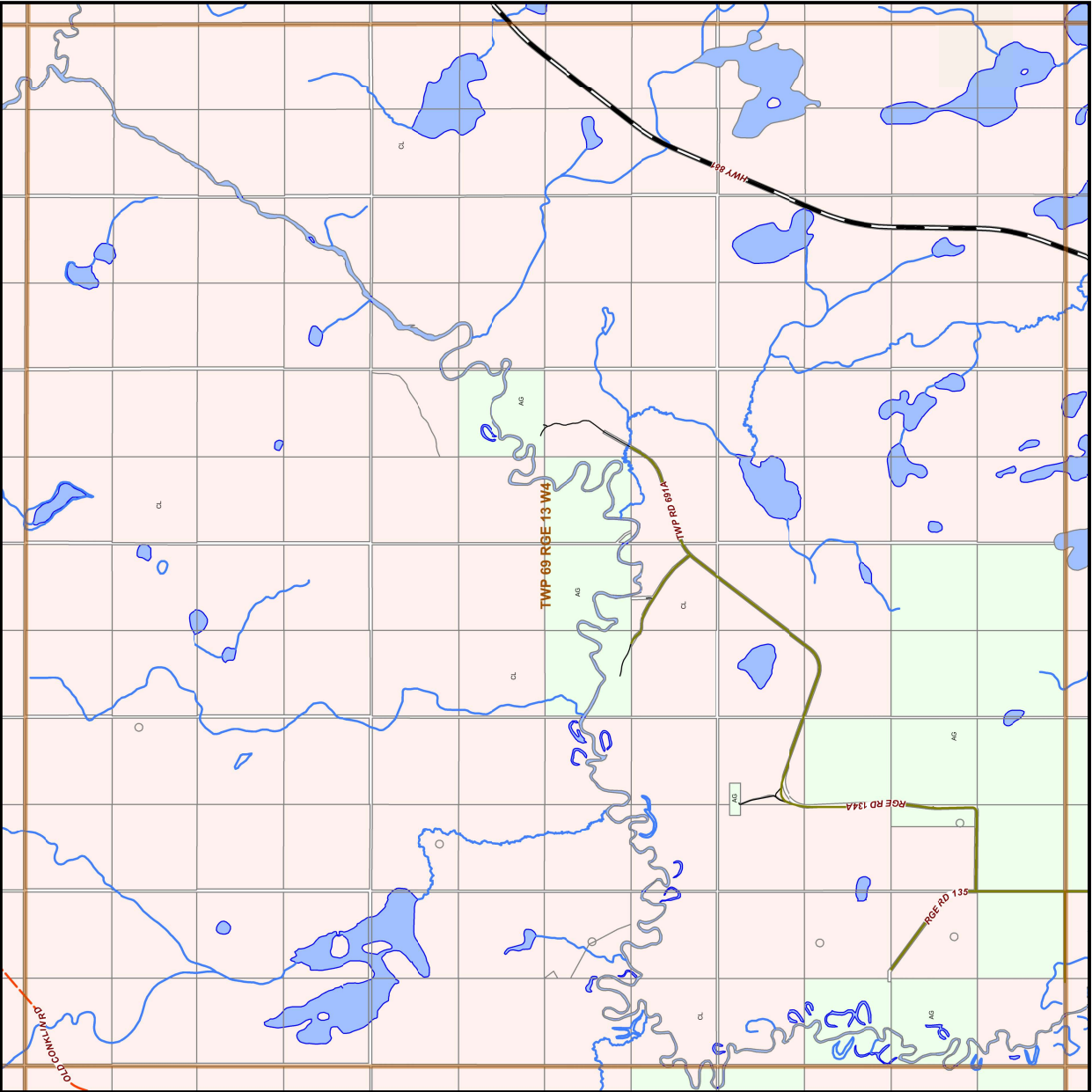
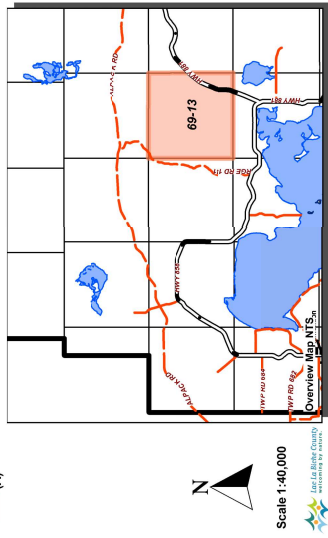
Map Sheet Updated: September 2017  
 Compiled from the Rural Cadastral Digital Base May 2017  
 Shaded Data Warehouses July 2017  
 All Rights Reserved.  
 Not to be copied in whole or in part.

- RESIDENTIAL DISTRICTS**
- Narrow Lot Single Detached Dwelling (NSD)
  - Medium Density Hamlet Residential (MDR)
  - Estate Small Lot Residential 1 (ES1)
  - Country Residential (CR)
  - Mobile Home Community (MHC)
  - Resort Recreational (RR)
  - Rural Residential Work/Live (RRW)
  - Low Density Residential (LDR)
  - High Density Hamlet Residential (HDR)
  - Estate Small Lot Residential 2 (ES2)
  - On-site Estate Residential 1 (OE1)
  - On-site Estate Residential 2 (OE2)
  - Restricted Residential Large Lot (RR)

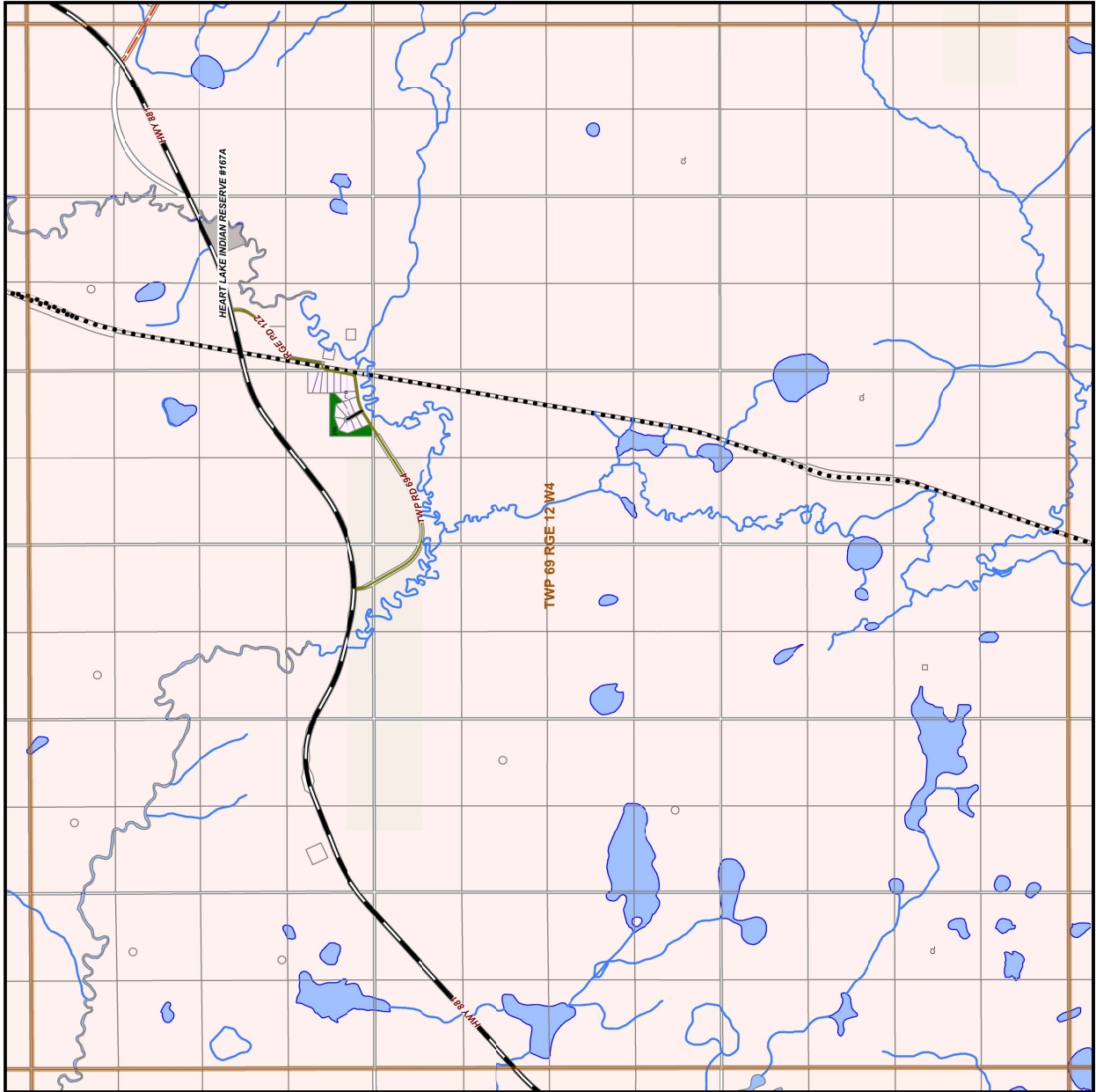
- COMMERCIAL DISTRICTS**
- Central Commercial (CC)
  - Highway Commercial (HC)
  - Neighbourhood Commercial (NC)
  - Rural Commercial (RC)
  - Mixed Use Residential - Business (MREB)
  - Hamlet Commercial Business (HCB)
  - Public Services Districts
    - Urban Reserve (UR)
    - Public Institutional (PI)
    - Natural Area Protection (NAP)
    - Parks and Recreation (PR)

- INDUSTRIAL DISTRICTS**
- Light Industrial (LI)
  - Hamlet Light Industrial (HLI)
  - General Industrial (GI)
  - Heavy Industrial (HI)
  - Airport (A)
- DIRECT CONTROL DISTRICTS**
- Direct Control 1 (DC1)
  - Direct Control 2 (DC2)
  - Direct Control 3 (DC3)

- RESOURCES DISTRICTS**
- Agricultural (AG)
  - Crown Land (CL)



Map Sheet Updated: September 2017  
 Compiled from the Rural Cadastral Digital Base May 2017  
 Shaded Data Warehouses Ltd. All Rights Reserved.  
 Not to be copied in whole or in part.



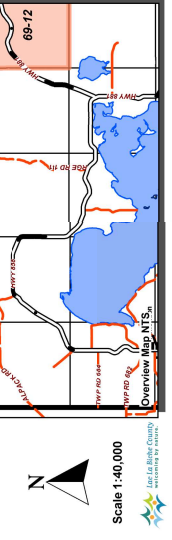
- RESIDENTIAL DISTRICTS**
- Narrow Lot Single Detached Dwelling (NSD)
  - Medium Density Hamlet Residential (MDR)
  - Estate Small Lot Residential 1 (ES1)
  - Country Residential (CR)
  - Mobile Home Community (MHC)
  - Resort Recreational (RR)
  - Rural Residential Work/Live (RRW)
  - Low Density Residential (LDR)
  - High Density Hamlet Residential (HDR)
  - Estate Small Lot Residential 2 (ES2)
  - On-site Estate Residential 1 (OE1)
  - On-site Estate Residential 2 (OE2)
  - Restricted Residential Large Lot (RR)

- COMMERCIAL DISTRICTS**
- Central Commercial (CC)
  - Highway Commercial (HC)
  - Neighbourhood Commercial (NC)
  - Rural Commercial (RC)
  - Mixed Use Residential - Business (MREB)
  - Hamlet Commercial Business (HCB)
  - Urban Reserve (UR)
  - Public Institutional (PI)
  - Natural Area Protection (NAP)
  - Parks and Recreation (PR)

- INDUSTRIAL DISTRICTS**
- Light Industrial (LI)
  - Hamlet Light Industrial (HLI)
  - General Industrial (GI)
  - Heavy Industrial (HI)
  - Airport (A)

- DIRECT CONTROL DISTRICTS**
- Direct Control 1 (DC1)
  - Direct Control 2 (DC2)
  - Direct Control 3 (DC3)

- RESOURCES DISTRICTS**
- Agricultural (AG)
  - Crown Land (CL)



Map Sheet Updated: September 2017  
 Compiled from the Rural Cadastral Digital Base May 2017  
 Shaded Data Warehouses Ltd. All Rights Reserved.  
 Not to be copied in whole or in part.