

# Lac La Biche County Agricultural Equipment Rental Listing



# How To Reserve Equipment

**Go online to:**

[www.picktime.com/ASBEquipmentrentals](http://www.picktime.com/ASBEquipmentrentals)

1. Click on the equipment you are requesting.  
Select your pick-up time\*.

\*Pick-up must be between 8:30 am and 4:30 pm, Mon-Fri.

2. Enter your details.

3. Payment can be taken through County Centre  
Front Desk by appointment, or through Credit  
Card Authorization.

**If you have issues, please call 780-623-6366.**

## 2024 AGRICULTURE SERVICES RENTAL EQUIPMENT RATES

I.D. #	Description	Current Rate	
2005	Livestock Scale	Daily rate:	\$30.00 + GST
		Weekend rate:	\$50.00 + GST
		Damage deposit	\$100.00
2006	Brush Cutter	Daily rate:	\$230.00 + GST
		Weekend rate:	\$400.00 + GST
		Damage deposit	\$100.00
2007	Schulte Rock Picker	Daily rate:	\$200.00 + GST
		Weekend rate:	\$300.00 + GST
		Damage deposit	\$100.00
2008	Schulte Rock Windrower (Rake)	Daily rate:	\$140.00 + GST
		Weekend rate:	\$200.00 + GST
		Damage deposit	\$100.00
294	Valmar Air Seeder – Pin hitch	Daily rate:	\$125.00 + GST
		Weekend rate:	\$150.00 + GST
		Damage deposit	\$100.00
2002	Willmar Fertilizer Spreader	Daily rate:	\$125.00 + GST
		Weekend rate:	\$150.00 + GST
		Damage deposit	\$100.00
2003	Trailer Sprayer- 2” ball hitch	Daily rate:	\$50.00 + GST
		Weekend rate:	\$75.00 + GST
		Damage deposit:	\$100.00
295	Post Pounder - P.T.O. – pin hitch	Daily rate:	\$80.00 + GST
		Weekend rate:	\$120.00 + GST
		Damage deposit:	\$100
2009	Post Pounder – Gas powered – pin hitch	Daily rate:	\$100.00 + GST
		Weekend rate:	\$140.00 + GST
		Damage deposit:	\$100
	Tree Fogger	Daily rate:	\$25.00 + GST
		Weekend rate:	\$35.00 + GST
		Damage deposit:	\$100.00
265	Right/Left hand Squeeze Chute – 2” ball hitch	Daily rate:	\$25.00 + GST
		Weekend rate:	\$35.00 + GST
		Damage deposit:	\$100.00
297	Loading Chute – pin hitch *Includes 14 Corral Panels	Daily rate:	\$50.00 + GST
		Weekend rate:	\$60.00 + GST
		Damage deposit:	\$100
281	Corral Panels – 24 Panel Trailer	Daily rate:	\$25.00 + GST
282	*3 sets available pin hitch (one set is 12	Weekend rate:	\$35.00 + GST
283	panels)	Damage deposit:	\$100.00

I.D. #	Description	Current Rate
293	Flex Harrows – pin hitch	Daily rate: \$100.00 + GST Weekend rate: \$125 + GST Damage deposit: \$100.00
2004	Land Roller (20 ft, 7600 lb, 42-inch drum), pin hitch	Daily rate: \$100.00 + GST Weekend rate: \$150 + GST Damage deposit: \$100.00
	Fencing Stapler	Daily rate: \$25.00 + GST Weekend rate: \$35 + GST Damage deposit: \$100.00
	Bloodless Castrator Kit	Daily rate: \$20.00 + GST Weekend rate: \$30.00 + GST Damage Deposit: \$100.00
	Castrator Bands	Unit price: \$4.25 + GST
	Grasshopper Bait Spreader	Daily rate: \$25.00 + GST Weekend rate: \$30.00 + GST Damage deposit: \$100.00
	Live Animal Traps	No charge for first 14 days >14 days \$5 per week Damage Deposit: \$100.00
	Gallagher CCIA Tag Reader	No Charge for first 7 days >7 days \$5 per week Damage deposit: \$100.00
	Sound Cannon	No charge for first 7 days >7 days \$5 per week Damage deposit: \$100.00
	Feed Probe/Sampler	No charge for first 7 days >7 days \$10 per week Damage deposit: \$100.00
	Squirrel Traps	No charge for first 7 days >7 days \$10 per week Damage deposit: \$100.00

# Livestock Scale

Unit #2005



# Brush Cutter

#2006

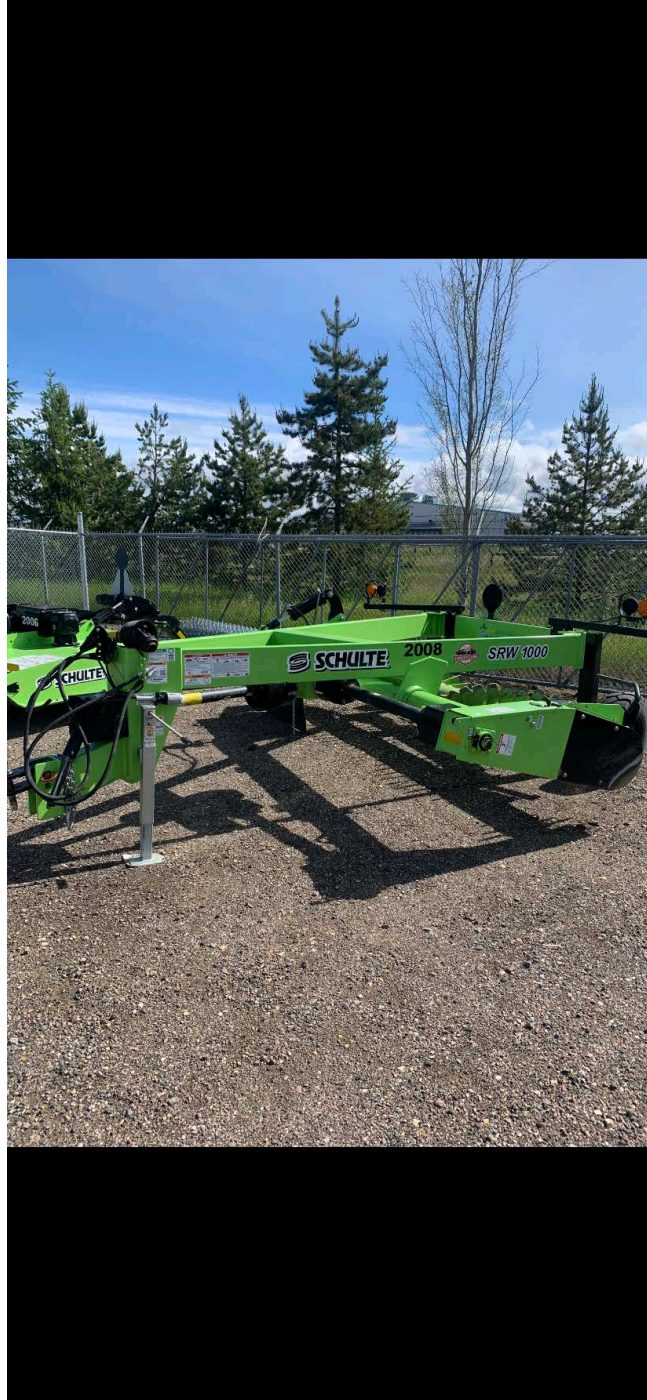


# Schulte Rock Picker

## Unit #2007



**Schulte Rock  
Windrower (Rake)  
Unit #2008**

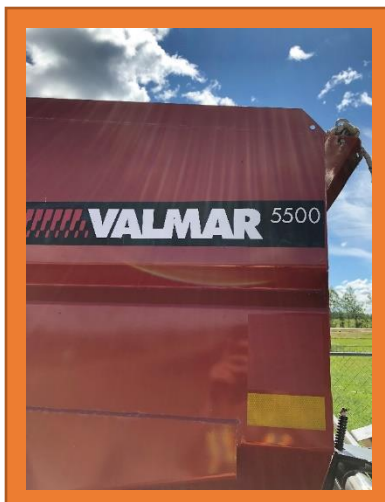
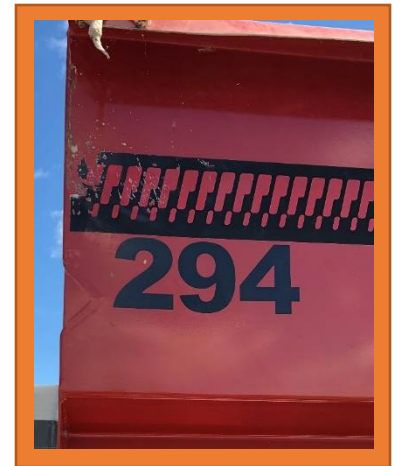




# Valmar Air Seeder

## Unit #294

Pin Hitch



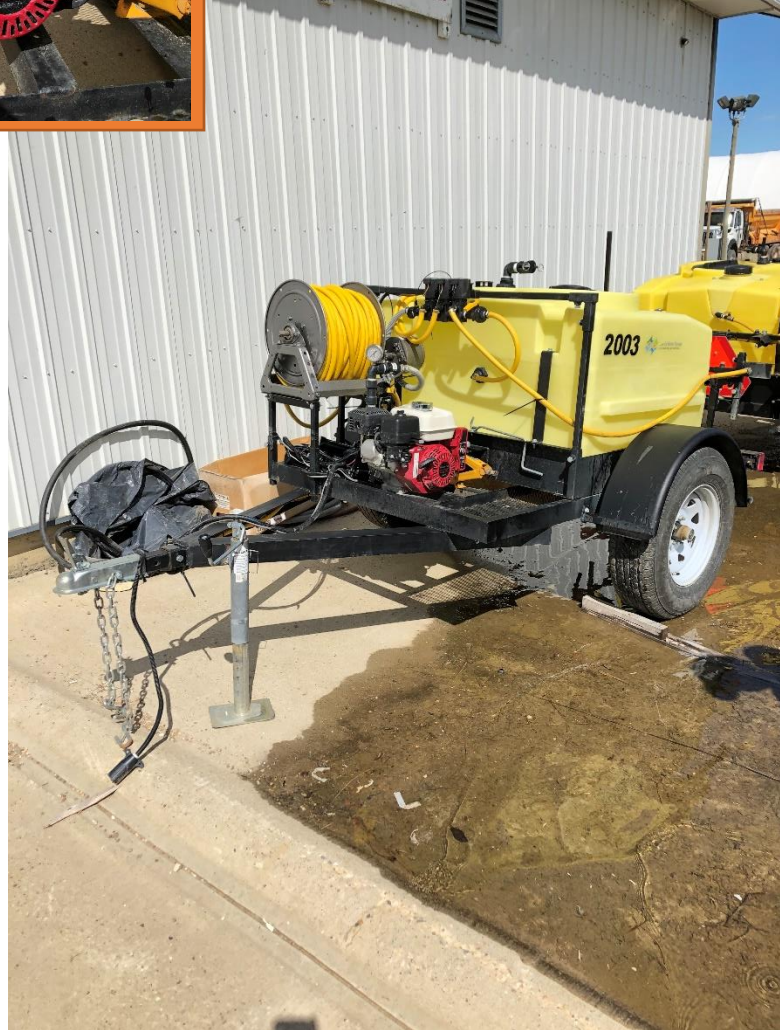
# Wilmer Fertilizer/Ash Applicator

Unit #2002



# Trailer Sprayer

2" Ball Hitch



# Post Pounders – P.T.O Driven

2 Units Available

Unit #299, 295

Pin Hitch



# Post Pounder - Gas Powered

Pin Hitch - Unit #2009



# STIHL Tree Fogger

1 Available



# Right/Left Hand Squeeze Chute

Unit #645

2" Ball Hitch



# Loading Chute (Includes 14 Corral Panels)

Pin Hitch





# Corral Panels

3 Available 24 Panel Trailer

1 Available 12 Panel Trailer

Unit #281,282,283,301

Pin Hitch



# Flex Harrows

Pin Hitch

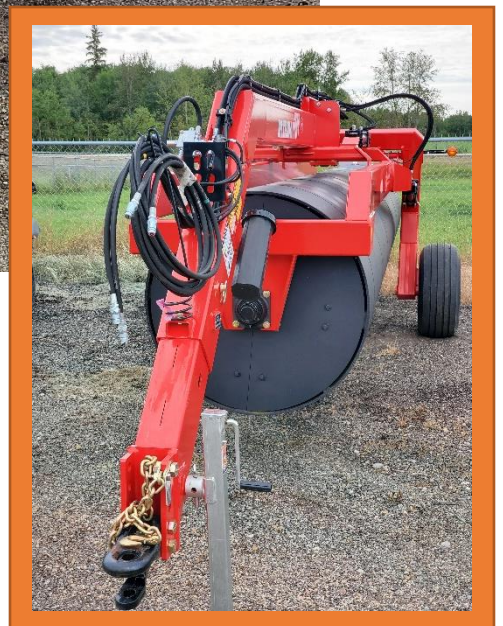
Unit #293



# Riteway Land Roller

(20ft, 7600 lbs, 42 Inch Drum)

1 Available



# Fence Stapler



# Bloodless Castrator Kit

## Castrator Bands



# Grasshopper Bait Spreader



# Live Animal Traps

Please rinse/wash thoroughly before returning.



# Squirrel Traps

Please rinse/wash thoroughly before returning.





# Gallagher CCIA Tag Reader

1 Available



# Sound Cannon

Permit required.

Please email [agriculture@laclabichcounty.com](mailto:agriculture@laclabichcounty.com)

Or call 780-623-6366 for more information.



# Feed Probe

**1 Available**

**Please Note:**

The Lac La Biche County Agricultural Services department does not provide sample analysis and does not ship samples for producers.

