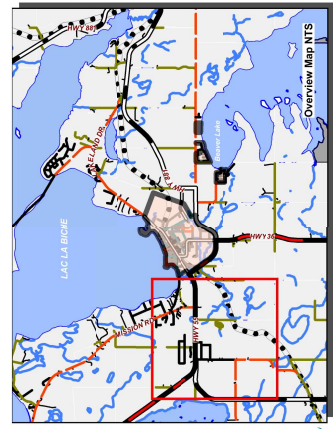
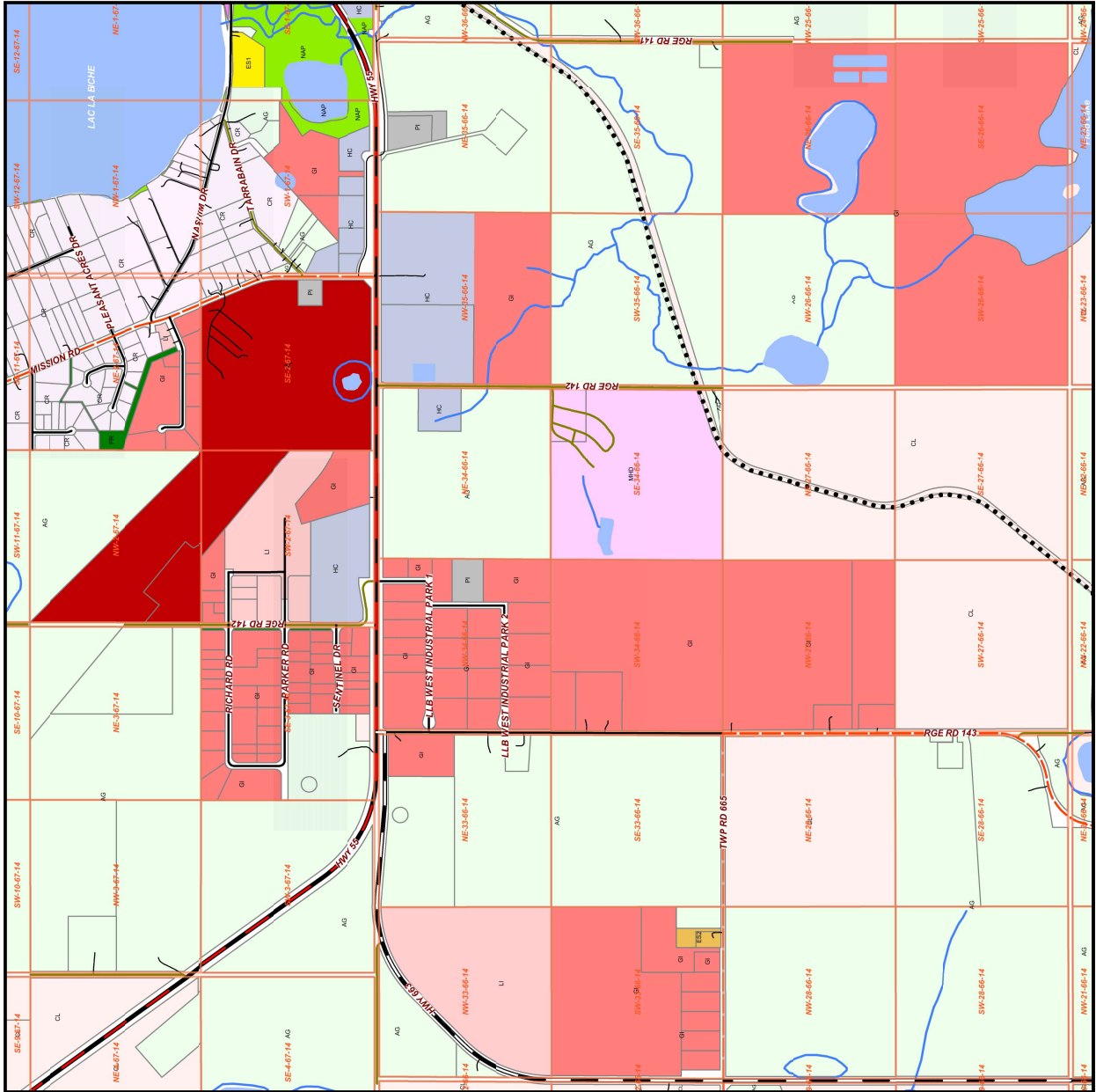


| | |
|--|---|
| <p>RESIDENTIAL DISTRICTS</p> <ul style="list-style-type: none"> Low Density Residential (LDR) High Density Hamlet Residential (HDR) Estate Small Lot Residential 2 (ES2) On-site Estate Residential 1 (OE1) On-site Estate Residential 2 (OE2) Restricted Residential Large Lot (RR) Narrow Lot Single Detached Dwelling (NSD) Medium Density Hamlet Residential (MDR) Estate Small Lot Residential 1 (ES1) Country Residential (CR) Mobile Home Community (MHC) Resort Recreational (RR) Rural Residential Work/Live (RRW) | <p>PUBLIC SERVICES DISTRICTS</p> <ul style="list-style-type: none"> Urban Reserve (UR) Public Institutional (PI) Natural Area Protection (NAP) Parks and Recreation (PR) |
| <p>COMMERCIAL DISTRICTS</p> <ul style="list-style-type: none"> Central Commercial (CC) Highway Commercial (HC) Neighbourhood Commercial (NC) Rural Commercial (RC) Mixed Use Residential - Business (MRE) Hamlet Commercial Business (HCBS) | <p>DIRECT CONTROL DISTRICTS</p> <ul style="list-style-type: none"> Direct Control 1 (DC1) Direct Control 2 (DC2) Direct Control 3 (DC3) |
| <p>INDUSTRIAL DISTRICTS</p> <ul style="list-style-type: none"> Light Industrial (LI) Hamlet Light Industrial (HLI) General Industrial (GI) Heavy Industrial (HI) Airport (A) | <p>RESOURCES DISTRICTS</p> <ul style="list-style-type: none"> Agricultural (AG) Crown Land (CL) |



Scale 1:20,000



Map Sheet Updated: September 2017
 Compiled from the Rural Cadastral Digital Base May 2017
 Shaded Data Whereabouts Ltd. All Rights Reserved.
 Not to be copied in whole or in part.