
ADDENDUM #1

A. INTERPRETATION

1. This Addendum forms part of the official tender documents for the above noted tender;
2. All terms used in this Addendum which are defined in the Tender Documents will have the meaning assigned by the Tender unless the context otherwise requires; and
3. In the event of any inconsistency between the terms of this Addendum and other Tender Documents forming the Tender, this Addendum will prevail. Where the conflict is between this Addendum and the terms of a later Addendum, the later Addendum will prevail.

B. MODIFICATIONS TO THE TENDER DOCUMENTS

1. Supplementary tender forms, page 5 of 6. For bid item 4.02, change "Supply and install 100mm depth standard concrete . . ." to "Supply and install 150mm depth standard concrete . . ."

C. CLARIFICATIONS TO QUESTIONS

Question #1

Will the PDC be powered from the existing east power pole or is there power onsite already?

Response #1

The lot previously had a residence on it. There is no power infrastructure on site. Power would need to be provided by a connection from the pole located at the east side of the lot.

Question #2

Will the PDC be required to be steel pre-manufactured cabinet or are wooden structures being accepted?

Response #2

Cabinet to be steel, pre-manufactured, durable and lockable. Wood is not acceptable.

Question #3

Will a hand/off/auto switch be required for the lighting circuit?

Response #3

No. On-site lighting to be controlled by a photocell located to the Contractor's discretion.

Question #4

Will the PDC require spare breakers for future expansion?

Response #4

The PDC will need at least three empty circuit breaker ports for future expansion, but no spare breakers need to be provided.

Question #5

Besides the conduit, do we include wire, breakers, controls for the street clock?

Response #5

Street clock must be operational, so yes – will require wire, breakers as well as the conduit. There is no need for a separate switch to turn the clock on / off, this can be done directly from the panel having the clock on its own circuit.

Question #6

Can the part numbers be confirmed for the F1 and F2 bollard lights?

Response #6

BEGA B99727 K35 SLV head, BEGA B99622 SLV tube

ADDENDUM #1

Question #7

Is a transformer required on the power pole?

Response #7

The lot recently had a home on it and there is a pole at the front of the property from which power can be taken. The Contractor's electrician's drawings shall have this included and coordination with Fortis for the connection is the Contractor's responsibility. That coordination will determine what the power connection requirements will be.

Question #8

Is the fence along the property line included in the bid?

Response #8

Replacing the wood screen fence along the north property line is a provisional item, and is item 9.01 (supply and install 1.8m ht uniform fence).

Question #9

Do we need a portable office on site?

Response #9

No office required, unless you want one.

Question #10

Is security needed if we can temp fence the work site?

Response #10

As for security and perimeter site fencing, as Prime Contractor you must provide whatever means necessary to keep the public safe and to conform to any requirements of your OH&S program. You must keep the public safe at all times, and as Prime Contractor you have discretion on how to do that and whether you want security or not.

Question #11

Is the gazebo provided or does the bid need to reflect the contractor to buy it.

Response #11

The Contractor will be responsible for providing engineered drawings, obtaining permits for, purchasing, accepting delivery and assembling the gazebo.

Question #12

On page 3 it shows a (8 inch) screw pile and on page 4 it shows a (12 inch) screw pile?

Response #12

An 8" dia. pile is required with the cutoff plate as noted.

Question #13

Confirm model # and colour of picnic tables and waste receptacles.

Response #13

Waste receptacle: SP-HF32 (Walnut and pewter grey)

Hex Picnic table: BVHPT-84 (walnut and gun metal grey)

Standard Picnic table: PKPT-6 (Reg)(walnut and gun metal grey)

ADDENDUM #1

Question #14

Item 6.04 – supply and install clock feature. I do not see a supplier for the clock, are we to propose one? If so what kind of parameters?

Response #14

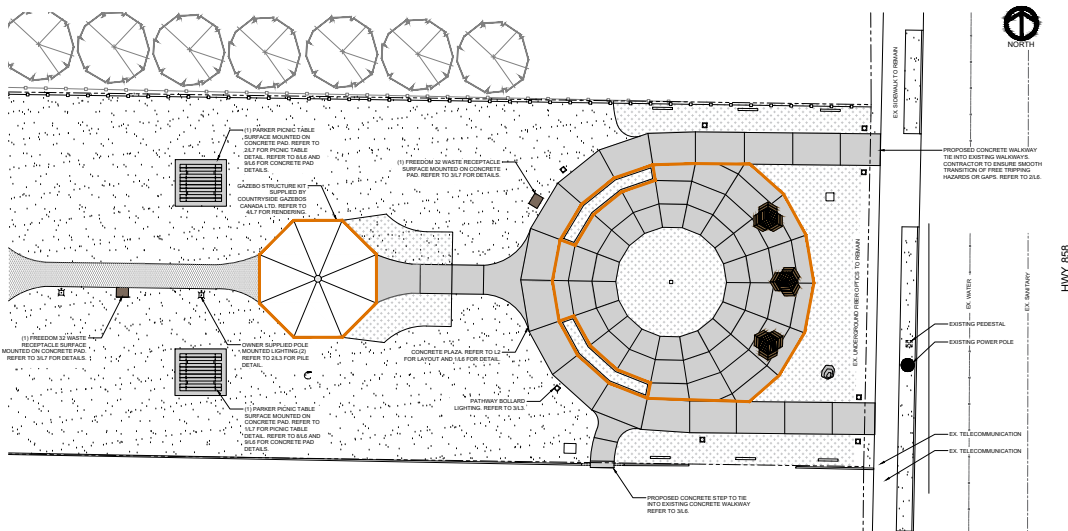
It's About Time BC, Tel. 1.800.664.5751, Email sales@itsabouttimebc.ca

Question #15

Item 4.02 – Supply and install 100mm concrete. Is this to read 150mm as per drawings? And does all concrete have a thickened edge?

Response #15

Concrete to be 150mm thick. Refer to the image below showing where thickened edges are required, shown in orange



SCALE 1:125

13.03.2025

LEGEND

— THICKENED EDGE REQUIRED

Figure 1.0
THICKENED SLAB
LOCATIONS

Question #16

We have spoke with the gazebo supplier and they have stated that a 12-sided gazebo would be cheaper. They would have to do the engineering for an 8-sided, they already have eng completed for a 12-sided. Would a 12 sided be acceptable?

Response #16

Yes, a 12-sided gazebo is acceptable provided that the diameter is still 24'

Project: Plamondon Village Square Development
Date: March 19, 2025
Page: 4 of 4

Our File: 32325
Closing: Tuesday, March 25th, 2025
12:00:00 noon local time

ADDENDUM #1

Question #17

Is the County set on bonding?

Response #17

Confirmed - bonding is required.

Question #18

Can you provide more details on the waste receptacles (colour, handle option, bear-proof, etc.)

Response #18:

See Response #13.

Question #19

Pay item 4.02 notes that concrete for sidewalk is 100mm depth, but detail 1 on L6 notes 150mm depth with thickened edges. Can we receive clarification on this?

Response #19:

Refer to Page 1 of the addendum, MODIFICATIONS TO TENDER DOCUMENTS. Concrete to be 150mm depth, and thickened edges in locations as shown in Response #15

END OF ADDENDUM #1