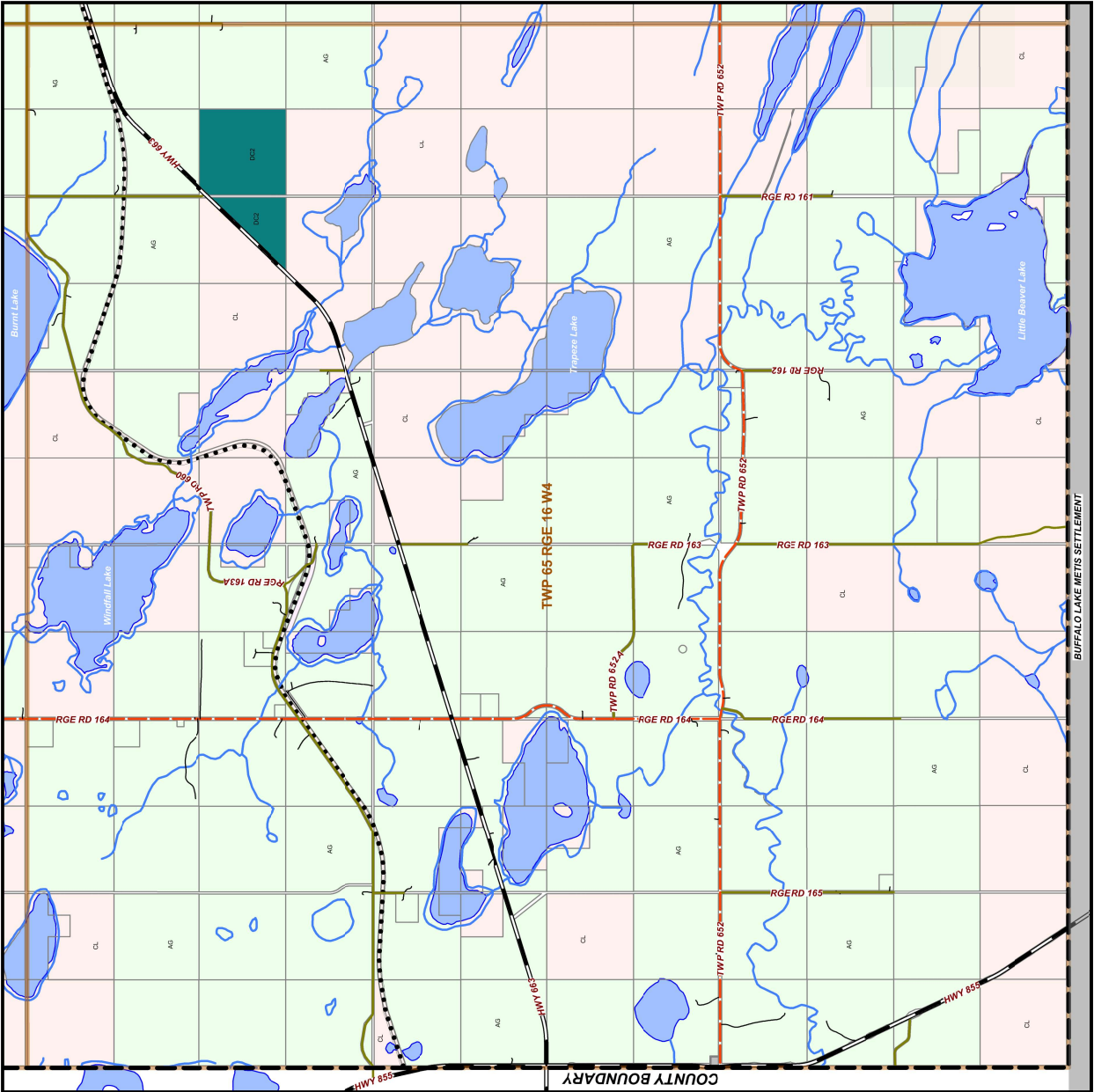
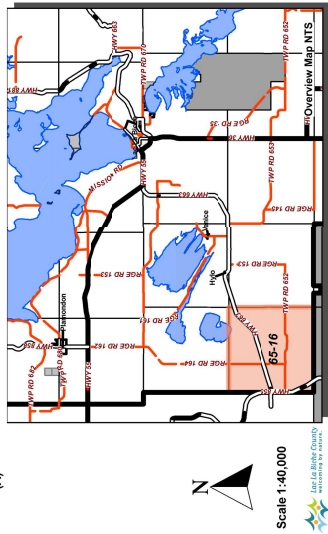


- RESIDENTIAL DISTRICTS**
- Narrow Lot Single Detached Dwelling (NSD)
 - Medium Density Hamlet Residential (MDR)
 - Estate Small Lot Residential 1 (ES1)
 - Country Residential (CR)
 - Mobile Home Community (MHC)
 - Resort Recreational (RR)
 - Rural Residential Work/Live (RRW)
 - Low Density Residential (LDR)
 - High Density Hamlet Residential (HDR)
 - Estate Small Lot Residential 2 (ES2)
 - On-site Estate Residential 1 (OE1)
 - On-site Estate Residential 2 (OE2)
 - Restricted Residential Large Lot (RR)

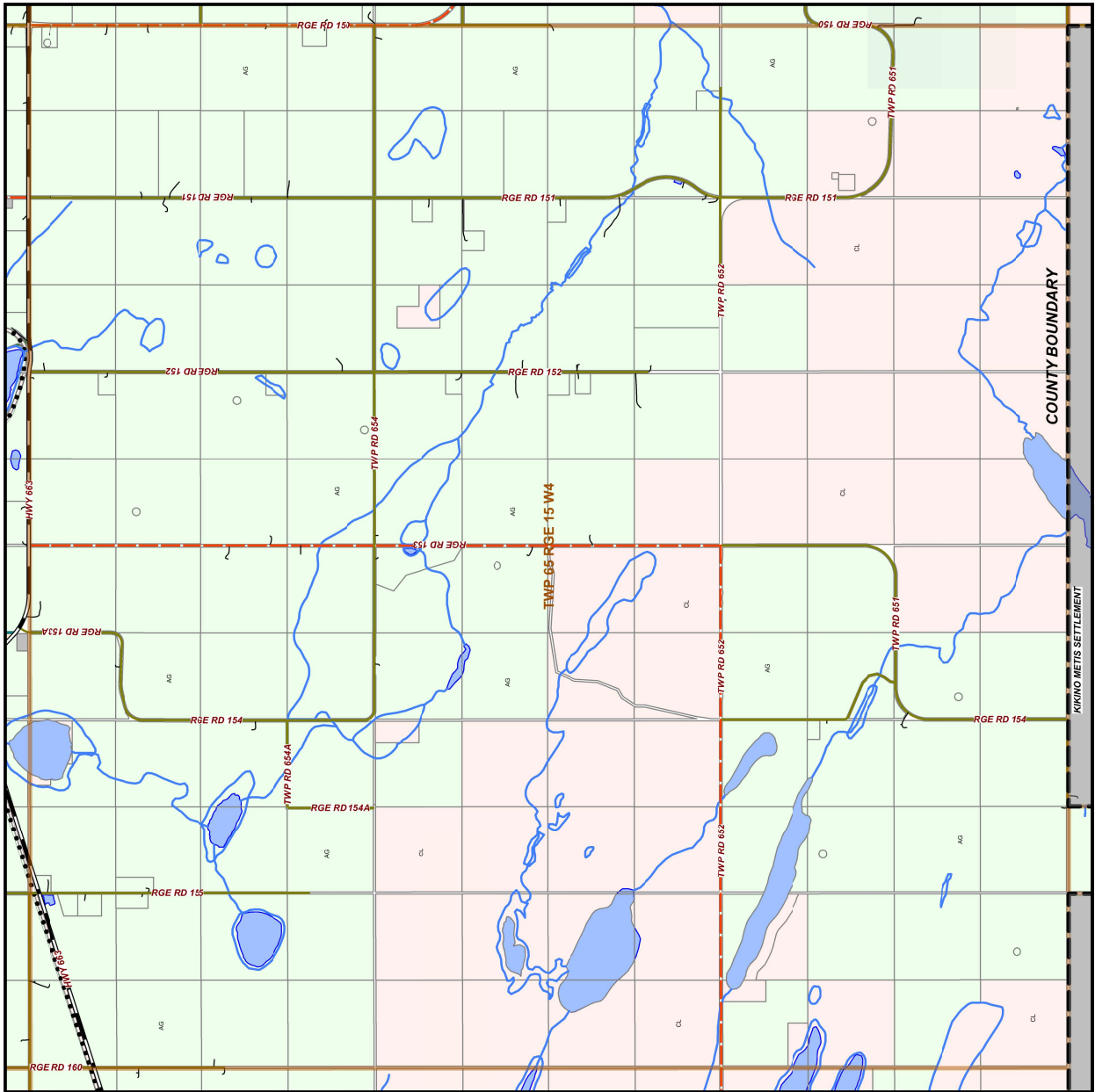
- COMMERCIAL DISTRICTS**
- Central Commercial (CC)
 - Highway Commercial (HC)
 - Neighbourhood Commercial (NC)
 - Rural Commercial (RC)
 - Mixed Use Residential - Business (MREB)
 - Hamlet Commercial Business (HCB)
- PUBLIC SERVICES DISTRICTS**
- Urban Reserve (UR)
 - Public Institutional (PI)
 - Natural Area Protection (NAP)
 - Parks and Recreation (PR)

- INDUSTRIAL DISTRICTS**
- Light Industrial (LI)
 - Hamlet Light Industrial (HLI)
 - General Industrial (GI)
 - Heavy Industrial (HI)
 - Airport (A)
- DIRECT CONTROL DISTRICTS**
- Direct Control 1 (DC1)
 - Direct Control 2 (DC2)
 - Direct Control 3 (DC3)

- RESOURCES DISTRICTS**
- Agricultural (AG)
 - Crown Land (CL)



Map Sheet Updated: September 2017
 Compiled from the Rural Cadastral Digital Base May 2017
 Shaded Data Warehouses Ltd. All Rights Reserved.
 Not to be copied in whole or in part.



RESIDENTIAL DISTRICTS

- Narrow Lot Single Detached Dwelling (NSD)
- Medium Density Hamlet Residential (MDR)
- Estate Small Lot Residential 1 (ES1)
- Country Residential (CR)
- Mobile Home Community (MHD)
- Resort Recreational (RR)
- Rural Residential Work/Live (RRW)

- Low Density Residential (LDR)
- High Density Hamlet Residential (HDR)
- Estate Small Lot Residential 2 (ES2)
- On-site Estate Residential 1 (OE1)
- On-site Estate Residential 2 (OE2)
- Restricted Residential Large Lot (RR)

COMMERCIAL DISTRICTS

- Central Commercial (CC)
- Highway Commercial (HC)
- Neighbourhood Commercial (NC)
- Rural Commercial (RC)
- Mixed Use Residential - Business (MRB)
- Hamlet Commercial Business (HCB)

PUBLIC SERVICES DISTRICTS

- Urban Reserve (UR)
- Public Institutional (PI)
- Natural Area Protection (NAP)
- Parks and Recreation (PR)

INDUSTRIAL DISTRICTS

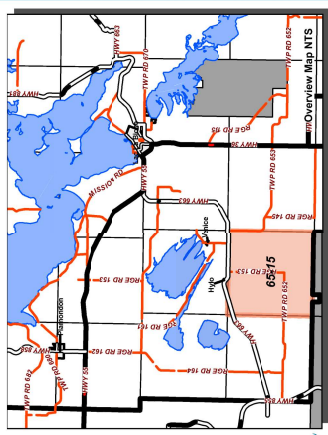
- Light Industrial (LI)
- Hamlet Light Industrial (HLI)
- General Industrial (GI)
- Heavy Industrial (HI)
- Airport (A)

DIRECT CONTROL DISTRICTS

- Direct Control 1 (DC1)
- Direct Control 2 (DC2)
- Direct Control 3 (DC3)

RESOURCES DISTRICTS

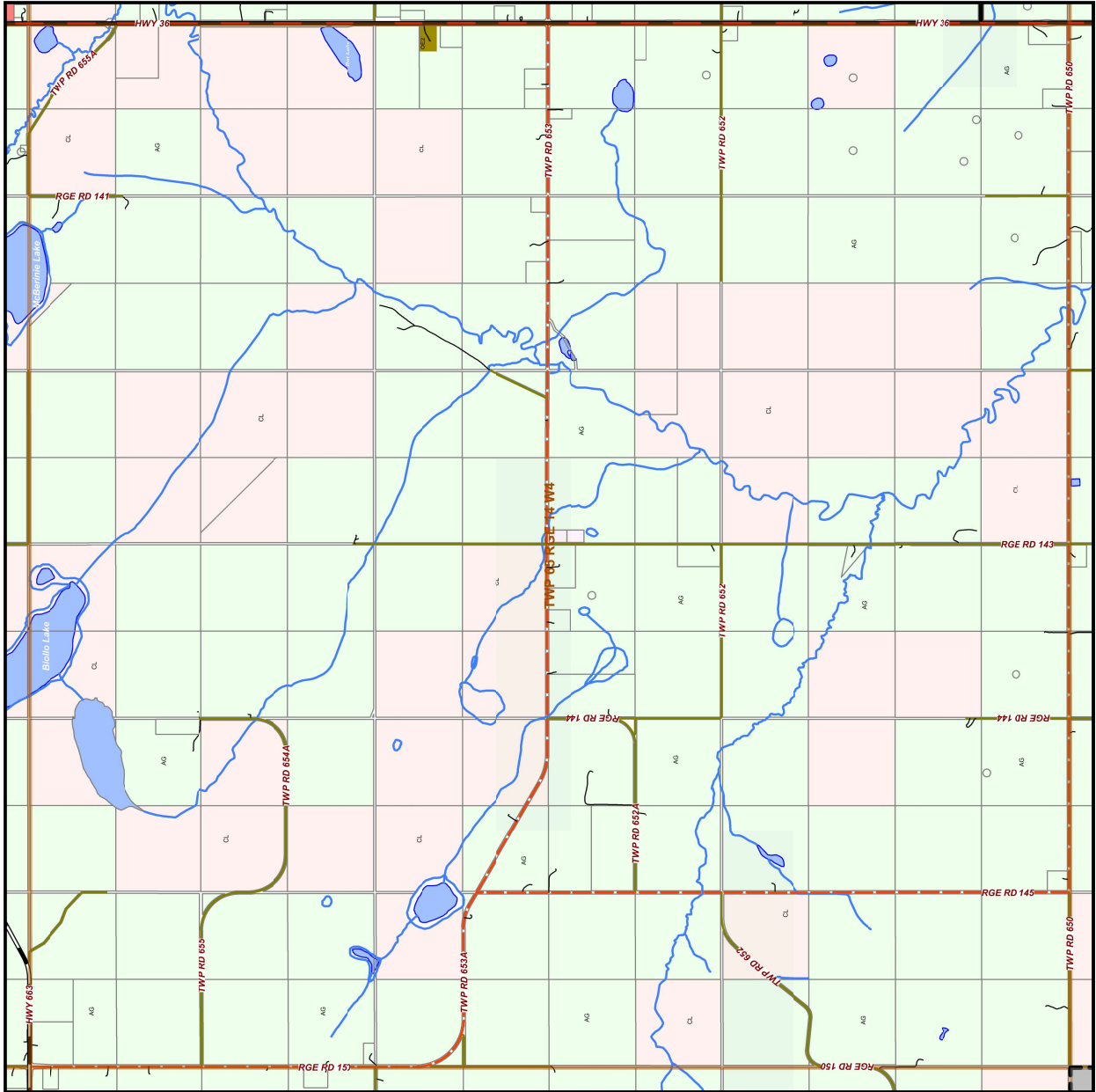
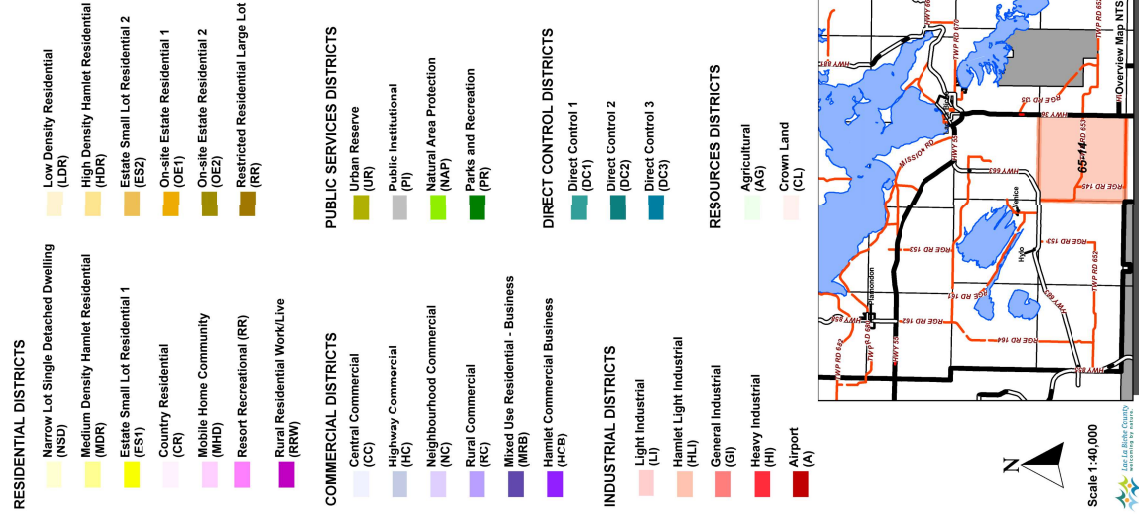
- Agricultural (AG)
- Crown Land (CL)



Scale 1:40,000



Map Sheet Updated: September 2017
 Compiled from the Rural Cadastral Digital Base May 2017
 Shaded Data Warehouses 2017. All Rights Reserved.
 Not to be copied in whole or in part.



Map Sheet Updated: September 2017
 Compiled from the Rural Cadastral Digital Base May 2017
 Shaded Data Warehouses 2017. All Rights Reserved.
 Not to be copied in whole or in part.

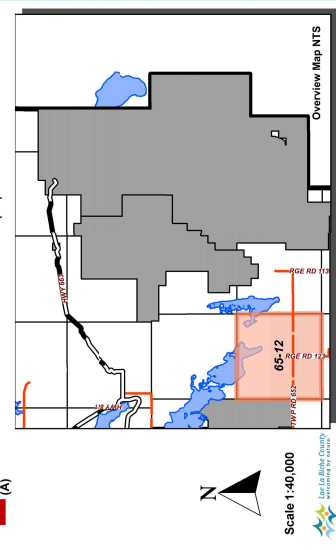
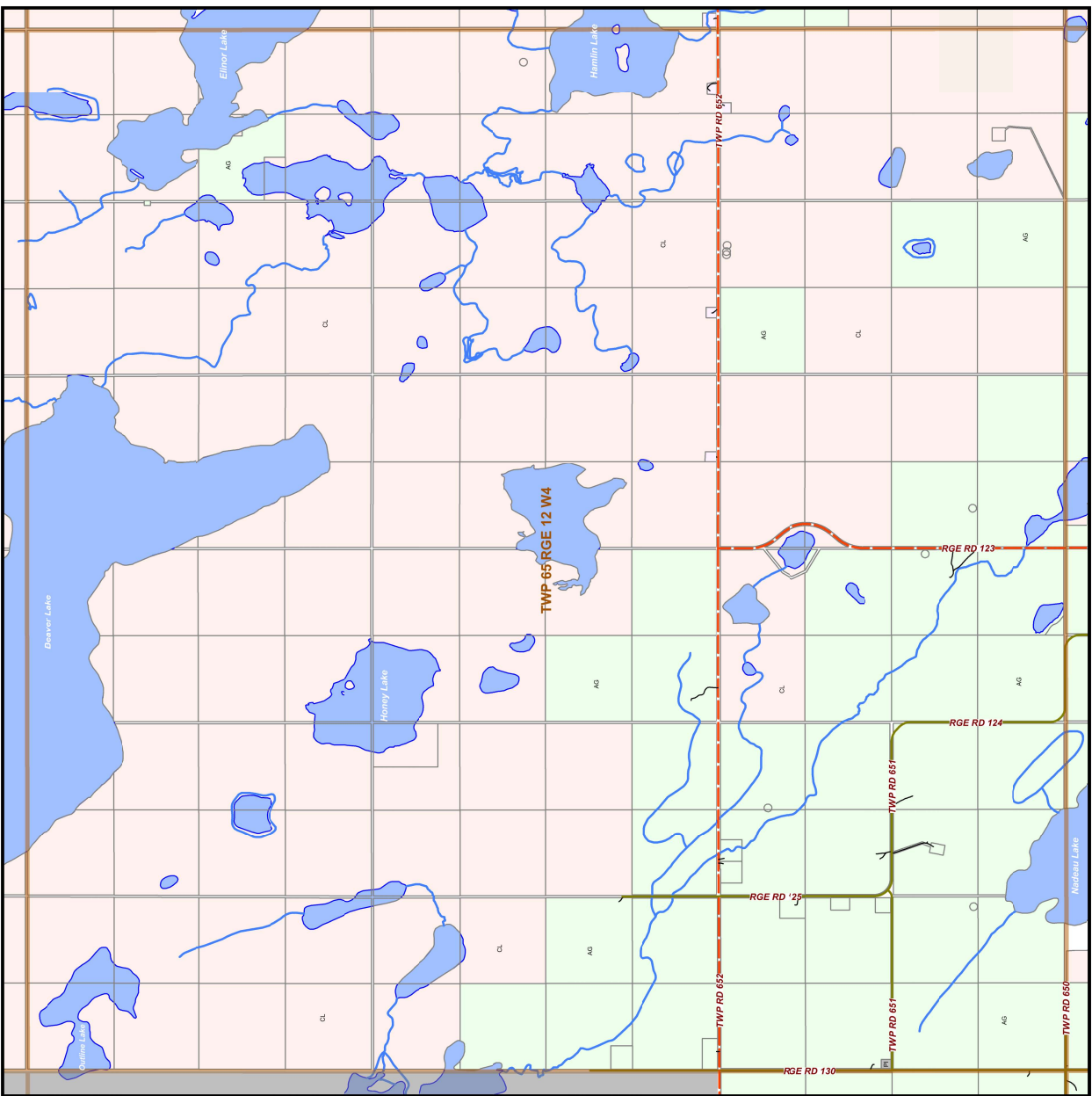
- RESIDENTIAL DISTRICTS**
- Narrow Lot Single Detached Dwelling (NSD)
 - Medium Density Hamlet Residential (MDR)
 - Estate Small Lot Residential 1 (ES1)
 - Country Residential (CR)
 - Mobile Home Community (MHC)
 - Resort Recreational (RR)
 - Rural Residential Work/Live (RRW)
 - Low Density Residential (LDR)
 - High Density Hamlet Residential (HDR)
 - Estate Small Lot Residential 2 (ES2)
 - On-site Estate Residential 1 (OE1)
 - On-site Estate Residential 2 (OE2)
 - Restricted Residential Large Lot (RR)

- COMMERCIAL DISTRICTS**
- Central Commercial (CC)
 - Highway Commercial (HC)
 - Neighbourhood Commercial (NC)
 - Rural Commercial (RC)
 - Mixed Use Residential - Business (MREB)
 - Hamlet Commercial Business (HC-B)
 - Public Services Districts
 - Urban Reserve (UR)
 - Public Institutional (PI)
 - Natural Area Protection (NAP)
 - Parks and Recreation (PR)

- INDUSTRIAL DISTRICTS**
- Light Industrial (LI)
 - Hamlet Light Industrial (HLI)
 - General Industrial (GI)
 - Heavy Industrial (HI)
 - Airport (A)

- DIRECT CONTROL DISTRICTS**
- Direct Control 1 (DC1)
 - Direct Control 2 (DC2)
 - Direct Control 3 (DC3)

- RESOURCES DISTRICTS**
- Agricultural (AG)
 - Crown Land (CL)



Map Sheet Updated: September 2017
 Compiled from the Rural Cadastral Digital Base May 2017
 Shaded Data Warehouses Ltd. All Rights Reserved.
 Not to be copied in whole or in part.

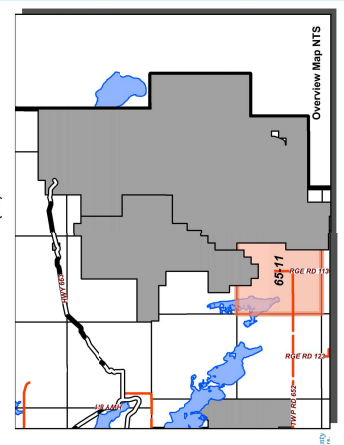
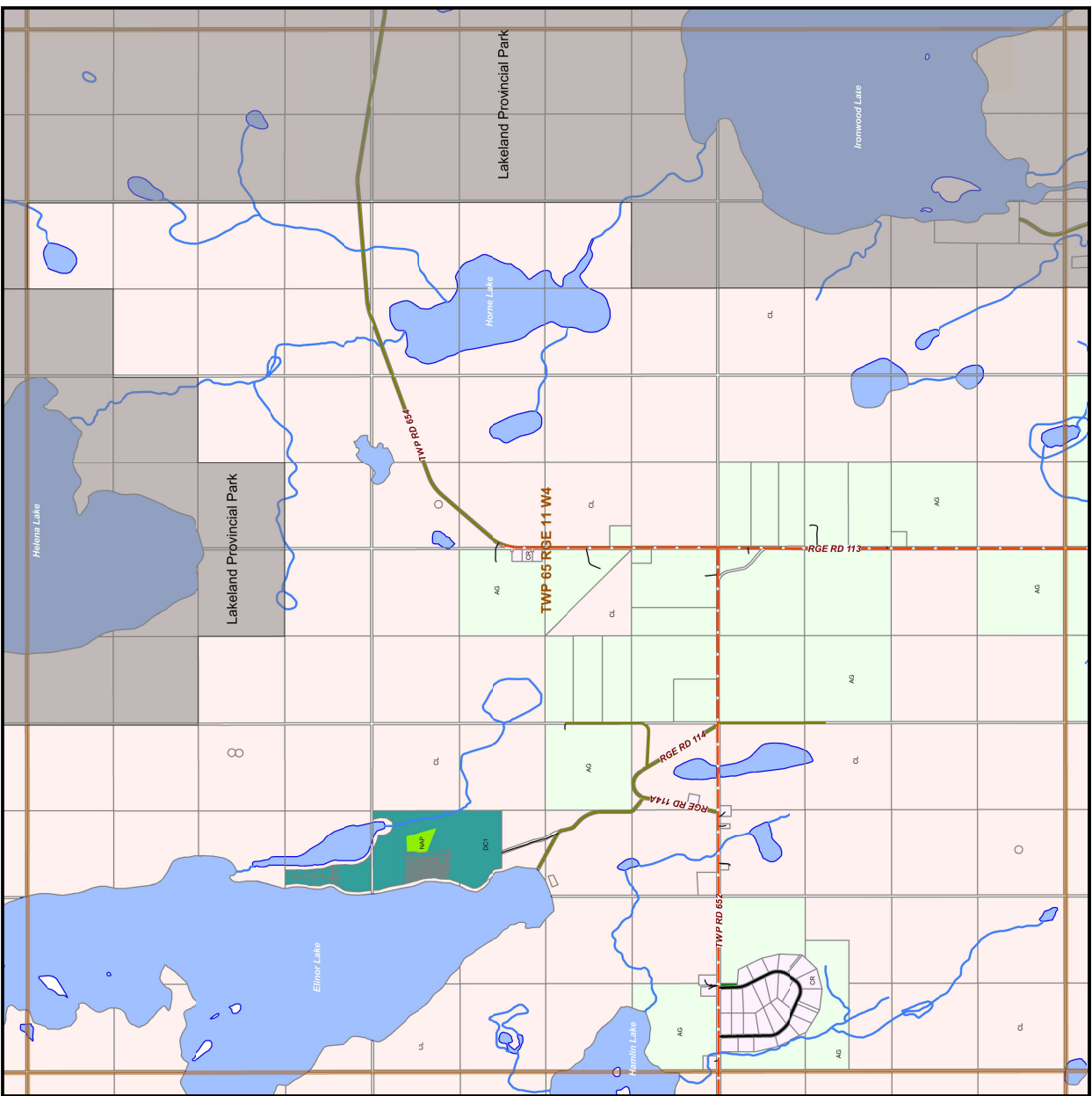
- RESIDENTIAL DISTRICTS**
- Narrow Lot Single Detached Dwelling (NSD)
 - Medium Density Hamlet Residential (MDR)
 - Estate Small Lot Residential 1 (ES1)
 - Country Residential (CR)
 - Mobile Home Community (MHC)
 - Resort Recreational (RR)
 - Rural Residential Work/Live (RRW)
 - Low Density Residential (LDR)
 - High Density Hamlet Residential (HDR)
 - Estate Small Lot Residential 2 (ES2)
 - On-site Estate Residential 1 (OE1)
 - On-site Estate Residential 2 (OE2)
 - Restricted Residential Large Lot (RR)

- COMMERCIAL DISTRICTS**
- Central Commercial (CC)
 - Highway Commercial (HC)
 - Neighbourhood Commercial (NC)
 - Rural Commercial (RC)
 - Mixed Use Residential - Business (MREB)
 - Hamlet Commercial Business (HCB)
 - Public Services Districts: Urban Reserve (UR), Public Institutional (PI), Natural Area Protection (NAP), Parks and Recreation (PR)

- INDUSTRIAL DISTRICTS**
- Light Industrial (LI)
 - Hamlet Light Industrial (HLI)
 - General Industrial (GI)
 - Heavy Industrial (HI)
 - Airport (A)

- RESOURCES DISTRICTS**
- Agricultural (AG)
 - Crown Land (CL)

- DIRECT CONTROL DISTRICTS**
- Direct Control 1 (DC1)
 - Direct Control 2 (DC2)
 - Direct Control 3 (DC3)



Map Sheet Updated: September 2017
 Compiled from the Rural Cadastral Digital Base May 2017
 Shaded Data Warehouses Ltd. All Rights Reserved.
 Not to be copied in whole or in part.