



Mayor Paul Reutov (left) visiting the reception centre at Parkland II Motel.

## RMWB evacuees find a warm welcome — again

We would like to thank everyone who helped us welcome hundreds of Fort McMurray evacuees in mid-May.

Many of us experienced déjà vu when the Regional Municipality of Wood Buffalo ordered an evacuation because of an out-of-control wildfire, but nobody batted an eye when it came to helping our northern neighbours. County employees, local businesses, non-profit groups and volunteers provided much-needed assistance, and we cannot thank you enough for your kindness and generosity.

In total, more than 1,000 individual evacuees (and their 250-plus pets!) registered at the local reception centre. Other reception centres opened in Cold Lake and Edmonton.

## Protect your property from wildfire... without burning through cash

Wildfires are a fact of life in Lac La Biche County. We can't avoid them completely, but we can prepare for them.

If you think a wildfire could one day threaten your property, we are here to help with reducing the risk.

### FireSmart™ assessments

We have a crew of trained inspectors who will visit your property and give you a free, no-strings-attached FireSmart™ “report card” with recommendations for controlling wildfire risk. What you do with this information is up to you, but we can help with next steps if you decide to follow our advice.

Plus, everyone who receives a FireSmart™ assessment is entered to win one of two chainsaws!

### Wildfire Mitigation Incentive Program (WMIP)

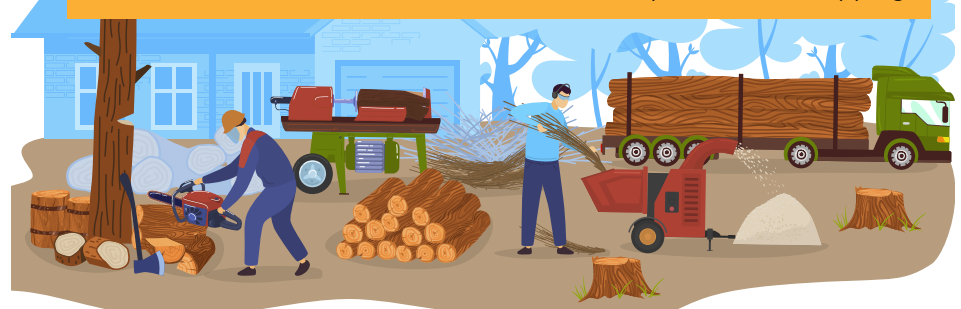
This program provides funding to property owners who receive FireSmart™ assessments and decide to make changes for the better, like removing vegetation and rebuilding structures with fire-resistant materials.

Eligible property owners can apply for up to \$3,750 to help with this kind of project, to a maximum of 75 per cent of total costs. For full program guidelines, go to [laclabichcounty.com](http://laclabichcounty.com) or call 780-623-6774 for details.

*Our WMIP is made possible by a grant from Intact Financial Corporation.*

*FireSmart, Intelli-feu and other associated Marks are trademarks of Canadian Interagency Forest Fire Centre Inc.*

*Brush removal is an easy way to reduce wildfire risk. If your FireSmart™ assessment recommends it, ask us about free help with wood-chipping!*



*We know being close to nature is one of the great joys of living in Lac La Biche County. Our FireSmart™ programs are all about helping people and nature co-exist, so our “Welcoming by nature” motto stays true for all current and future community members.*

## June is National Indigenous History Month

The lands we know today as Lac La Biche County have been home to Indigenous peoples since time immemorial.

Our community rests on Treaty 6, Treaty 8 and Treaty 10 lands, as well as the homeland of the Métis people. The County neighbours three First Nations and two Métis Settlements, and all lands within our borders are within the

traditional territory of Indigenous peoples. Many of our residents self-identify as Indigenous and have ancestral ties to the region.

June is National Indigenous History Month, and June 21 is National Indigenous Peoples Day. In the spirit of reconciliation, we encourage *all* of our residents to learn about the Indigenous peoples of Canada and our region.



Dancers at Heart Lake First Nation's Pow Wow.

Lac La Biche County is working to build and strengthen relationships with our Indigenous neighbours, and to ensure Indigenous perspectives are heard in our discussions.

The Indigenous Collaboration Committee sees members of County Council meeting regularly with representatives of local Indigenous communities and Indigenous-led organizations to discuss topics of mutual interest.

Another group with Indigenous involvement is the Lac La Biche Watershed Committee, which guides the implementation of our Watershed Management Plan for all lands and waters that drain into Lac La Biche (the lake). The committee recently drafted a letter to the Government of Alberta, asking for a traditional land-use framework that respects Indigenous Treaty rights to be completed as part of updating the Lower Athabasca Regional Plan (LARP). The LARP is like our Watershed Management Plan, but much bigger. In fact, it covers almost 15 per cent of the province. The committee is also asking for stronger supports for municipalities like Lac La Biche County that want to conserve wetlands and shorelines, to help keep water bodies healthy and sustainable for future generations.



## Lac La Biche County Fire Rescue is recruiting

Our local fire department is in need of new members. If you want a challenging, exciting opportunity to learn new skills and help protect the community, then consider joining Lac La Biche County Fire Rescue. All necessary training and equipment is provided. Members are paid for attending training and responding to calls. Every call is different, and it's definitely not a desk job.

For more information or to apply, visit [laclabichecounty.com](http://laclabichecounty.com) or call 780-623-6774.

## Property taxes due July 2

The deadline to pay property taxes to Lac La Biche County without incurring penalties is Tuesday, July 2, 2024.

A five per cent penalty will be applied to unpaid taxes on July 3, and a further seven per cent penalty will be applied in mid-November.

Did you know the County has an autopay option that divides your tax bill into monthly instalments? The payments are automatically withdrawn from your bank account each month, and no penalties will be applied while you use this program.

If you have any questions about tax payments, call our Finance department at 780-623-1747, or email [taxes@laclabichecounty.com](mailto:taxes@laclabichecounty.com).

# PLANNING & DEVELOPMENT SIMPLIFIED



## EVENT TENTS

No outdoor event is complete without a big tent. The weather in Alberta is finicky at best, and everyone appreciates having something between them and the elements.

Did you know building permits are required for event tents? Any structure covering more than 100 square feet requires a building permit. That's not a Lac La Biche County rule — it's a Province of Alberta rule. Plus, in the case of an event tent, it's meant to shelter a large number of people so public safety needs to be considered.

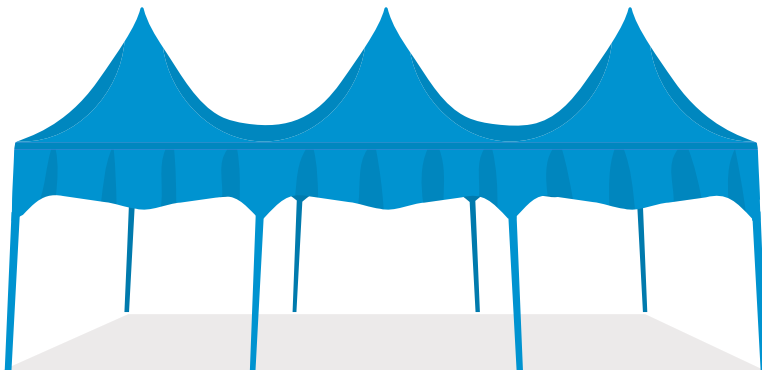
All building permits for Lac La Biche County are issued by The Inspections Group Inc. Our Planning & Development department receives permit applications to make the process as simple as possible. Visit [laclabichedcounty.com](http://laclabichedcounty.com) and click on "Safety Code Permits" in the menu under "Our Services" to find the application form. You can also get a printed form from the Planning & Development office at County Centre (13442 Highway 881).

### What else you will need:

- Site plan, showing the tent's distance from the property line and other structures
- Precise tent dimensions
- Proof of a fire-rated stamp for the tent

Fees are charged for building permits, and you will need to get yours 10 business days before the tent is set up, to allow time to process your application and inspect the event site, if necessary.

If you have any questions, call our Planning & Development team at 780-623-1747, or contact them by email at [planning.development@laclabichedcounty.com](mailto:planning.development@laclabichedcounty.com).



## Bored this summer?

We get it. What are you supposed to do with the kids when they're out of school and the novelty of long summer days has worn off, but they're still staring at you expectantly?

Fortunately, we have exciting programs for kids of all ages to help unleash creativity, develop skills and build friendships. Some are designed for parent-child bonding, and others bring like-minded parents together for social interaction and support.

Stay tuned for more details coming soon about the following programs for kids ages 0-18:

- Art in the Park
- Stroller Rollers
- Messy Play
- Junior Family Summer Fun
- Super Tweens
- Teen Social Club

We pride ourselves on developing and delivering programs that unlock our youths' potential and prepare them for their journeys in life. After all, they're our newest community members and the leaders of tomorrow, so we like to get them started on the right foot.

Keep an eye on our Facebook pages (*FCSS Young Family Connections* for early childhood programs, and *Lac La Biche County Family & Community Support Services* for all other programs) for updates.



## Dates to Remember

The first session of Summer Swim Lessons at Portage Pool starts Saturday, July 8. Call our Aquatic Services team at 780-623-6777 to register now.

### Friday, June 21

National Indigenous Peoples Day.

### Saturday, June 22

WIBIT swim at Portage Pool from 12-4 pm, using the WIBIT Aquatrack.

### Monday, July 1

Canada Day. County offices will be closed for the holiday.

### Tuesday, July 2

Deadline to pay property taxes to Lac La Biche County without incurring penalties.

For more County and community events, visit the Events Calendar on [laclabichecounty.com](http://laclabichecounty.com).

Your County in Touch is produced by Lac La Biche County and is available to every resident.

An electronic version of this newsletter is available. All you need to do is call (780) 623-1747 or provide your e-mail address to [intouch@laclabichecounty.com](mailto:intouch@laclabichecounty.com).

Use the same contact information for any address changes, additional copies or to unsubscribe.



## Get fit this summer with 99 days of access to the Bold Centre and Portage Pool

### Options Available:

Adult - \$99.00 for 99 days

Youth - \$49.50 for 99 days

Senior/Student - \$75.25 for 99 days

Family - \$250.00 for 99 days

*Offer effective May 25-Aug. 31 only. Cannot be combined with any other offer or promotion.*

